



Oct-1 Polyclonal Antibody

Catalog No	BYab-15787
Isotype	IgG
Reactivity	Human;Mouse;Rat
Applications	WB;IHC;IF;ELISA
Gene Name	POU2F1
Protein Name	POU domain class 2 transcription factor 1
Immunogen	The antiserum was produced against synthesized peptide derived from human OCT1. AA range:41-90
Specificity	Oct-1 Polyclonal Antibody detects endogenous levels of 40817 protein.
Formulation	Liquid in PBS containing 50% glycerol, 0.5% BSA and 0.02% sodium azide.
Source	Polyclonal, Rabbit,IgG
Purification	The antibody was affinity-purified from rabbit antiserum by affinity-chromatography using epitope-specific immunogen.
Dilution	WB: 1/500 - 1/2000. IHC: 1/100 - 1/300. ELISA: 1/5000.. IF 1:50-200
Concentration	1 mg/ml
Purity	≥90%
Storage Stability	-20°C/1 year
Synonyms	POU2F1; OCT1; OTF1; POU domain; class 2, transcription factor 1; NF-A1; Octamer-binding protein 1; Oct-1; Octamer-binding transcription factor 1; OTF-1
Observed Band	76kD
Cell Pathway	Nucleus.
Tissue Specificity	Ubiquitous. Isoform 2 is lymphocyte-specific.
Function	function:Transcription factor that binds to the octamer motif (5'-ATTTGCAT-3') and activates the promoters of the genes for some small nuclear RNAs (snRNA) and of genes such as those for histone H2B and immunoglobulins. Modulates transcription transactivation by NR3C1, AR and PGR.,PTM:Phosphorylated by PRKDC.,similarity:Belongs to the POU transcription factor family. Class-2 subfamily.,similarity:Contains 1 homeobox DNA-binding domain.,similarity:Contains 1 POU-specific domain.,subunit:Interacts with NR3C1, AR, PGR and HCFC1.,tissue specificity:Ubiquitous. Isoform 2 is lymphocyte-specific.,

Nanjing BYabscience technology Co.,Ltd



Background

The OCT1 transcription factor was among the first identified members of the POU transcription factor family (summarized by Sturm et al., 1993 [PubMed 8314572]). Members of this family contain the POU domain, a 160-amino acid region necessary for DNA binding to the octameric sequence ATGCAAAT.[supplied by OMIM, Jul 2010],

matters needing attention

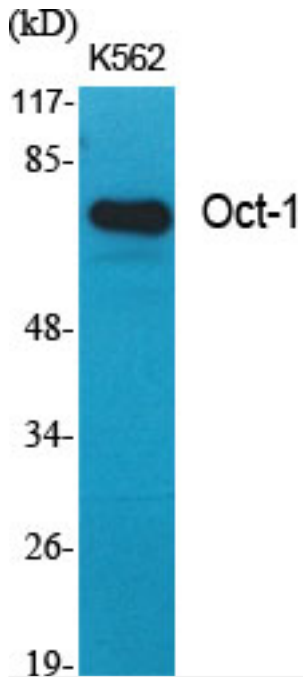
Avoid repeated freezing and thawing!

Usage suggestions

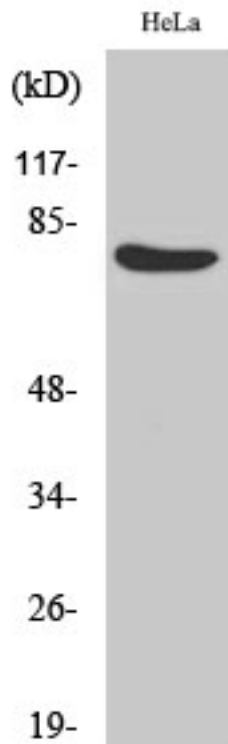
This product can be used in immunological reaction related experiments. For more information, please consult technical personnel.



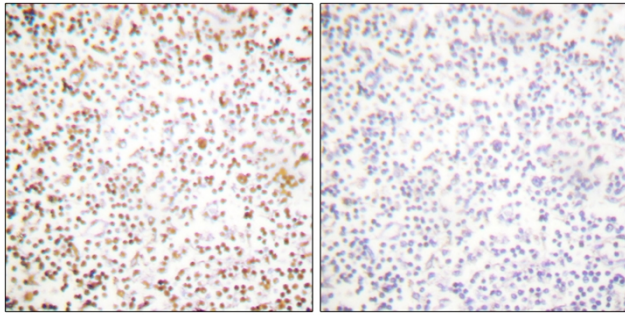
Products Images



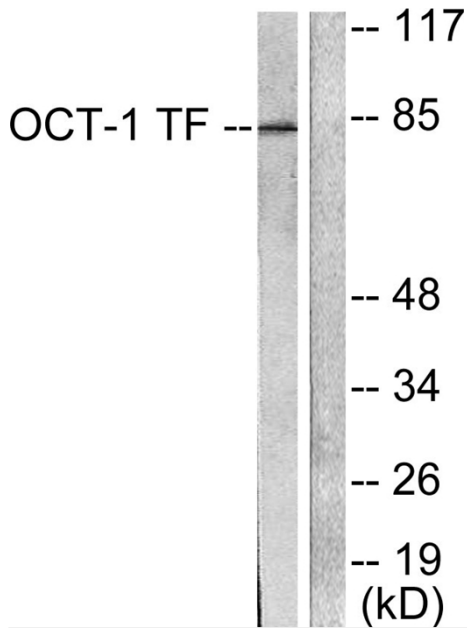
Western Blot analysis of various cells using Oct-1 Polyclonal Antibody diluted at 1:1000 cells nucleus extracted by Minute TM Cytoplasmic and Nuclear Fractionation kit (SC-003, Inventbiotech, MN, USA).



Western Blot analysis of HeLa cells using Oct-1 Polyclonal Antibody diluted at 1:1000 cells nucleus extracted by Minute TM Cytoplasmic and Nuclear Fractionation kit (SC-003, Inventbiotech, MN, USA).



Immunohistochemistry analysis of paraffin-embedded human lymph node tissue, using OCT1 Antibody. The picture on the right is blocked with the synthesized peptide.



Western blot analysis of lysates from HeLa cells, using OCT1 Antibody. The lane on the right is blocked with the synthesized peptide.