



Nkx-6.3 Polyclonal Antibody

Catalog No	BYab-15786
Isotype	IgG
Reactivity	Human;Mouse;Monkey
Applications	WB;IF;ELISA
Gene Name	NKX6-3
Protein Name	Homeobox protein Nkx-6.3
Immunogen	The antiserum was produced against synthesized peptide derived from human NKX6.3. AA range:161-210
Specificity	Nkx-6.3 Polyclonal Antibody detects endogenous levels of Nkx-6.3 protein.
Formulation	Liquid in PBS containing 50% glycerol, 0.5% BSA and 0.02% sodium azide.
Source	Polyclonal, Rabbit,IgG
Purification	The antibody was affinity-purified from rabbit antiserum by affinity-chromatography using epitope-specific immunogen.
Dilution	Western Blot: 1/500 - 1/2000. Immunofluorescence: 1/200 - 1/1000. ELISA: 1/10000. Not yet tested in other applications.
Concentration	1 mg/ml
Purity	≥90%
Storage Stability	-20°C/1 year
Synonyms	NKX6-3; Homeobox protein Nkx-6.3
Observed Band	34kD
Cell Pathway	Nucleus .
Tissue Specificity	Brain,
Function	function:Putative transcription factor, which may be involved in patterning of central nervous system and pancreas.,similarity:Contains 1 homeobox DNA-binding domain.,
Background	The NKX family of homeodomain proteins controls numerous developmental processes. Members of the NKX6 subfamily, including NKX6-3, are involved in development of the central nervous system (CNS), gastrointestinal tract, and pancreas (Alanentalo et al., 2006 [PubMed 16326147]).[supplied by OMIM, Mar 2008],

Nanjing BYabscience technology Co.,Ltd



matters needing attention

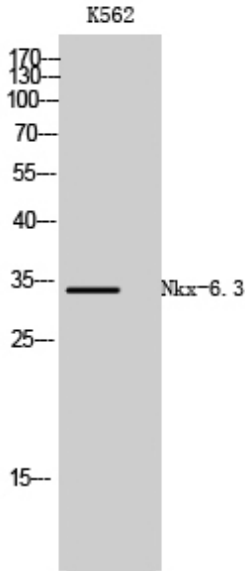
Avoid repeated freezing and thawing!

Usage suggestions

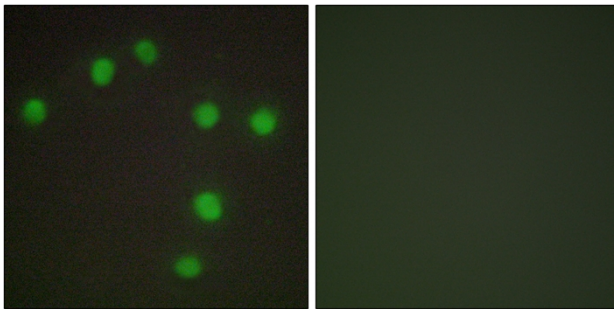
This product can be used in immunological reaction related experiments. For more information, please consult technical personnel.



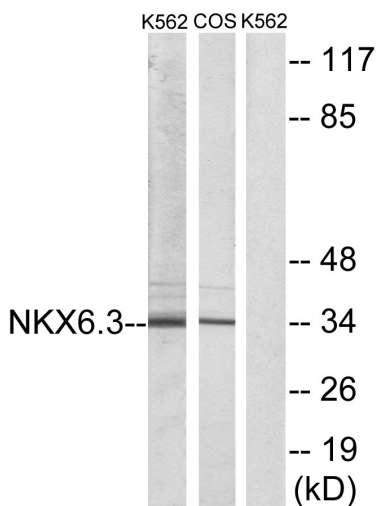
Products Images



Western Blot analysis of K562 cells using Nkx-6.3 Polyclonal Antibody cells nucleus extracted by Minute TM Cytoplasmic and Nuclear Fractionation kit (SC-003, Inventbiotech, MN, USA).



Immunofluorescence analysis of HUVEC cells, using NKX6.3 Antibody. The picture on the right is blocked with the synthesized peptide.



Western blot analysis of lysates from K562 and COS7 cells, using NKX6.3 Antibody. The lane on the right is blocked with the synthesized peptide.

Nanjing BYabscience technology Co.,Ltd