



Nkx-6.1 Polyclonal Antibody

Catalog No	BYab-15785
Isotype	IgG
Reactivity	Human;Mouse;Rat
Applications	WB;ELISA
Gene Name	NKX6-1
Protein Name	Homeobox protein Nkx-6.1
Immunogen	Synthesized peptide derived from Nkx-6.1 . at AA range: 180-260
Specificity	Nkx-6.1 Polyclonal Antibody detects endogenous levels of Nkx-6.1 protein.
Formulation	Liquid in PBS containing 50% glycerol, 0.5% BSA and 0.02% sodium azide.
Source	Polyclonal, Rabbit,IgG
Purification	The antibody was affinity-purified from rabbit antiserum by affinity-chromatography using epitope-specific immunogen.
Dilution	Western Blot: 1/500 - 1/2000. ELISA: 1/40000. Not yet tested in other applications.
Concentration	1 mg/ml
Purity	≥90%
Storage Stability	-20°C/1 year
Synonyms	NKX6-1; NKX6A; Homeobox protein Nkx-6.1; Homeobox protein NK-6 homolog A
Observed Band	
Cell Pathway	Nucleus .
Tissue Specificity	Pancreatic beta cells.
Function	function:May be important for control of islet development and/or regulation of insulin biosynthesis .,similarity:Contains 1 homeobox DNA-binding domain .,tissue specificity:Pancreatic beta cells .,
Background	In the pancreas, NKX6.1 is required for the development of beta cells and is a potent bifunctional transcription regulator that binds to AT-rich sequences within the promoter region of target genes Iype et al. (2004) [PubMed 15056733].[supplied by OMIM, Mar 2008],
matters needing attention	Avoid repeated freezing and thawing!

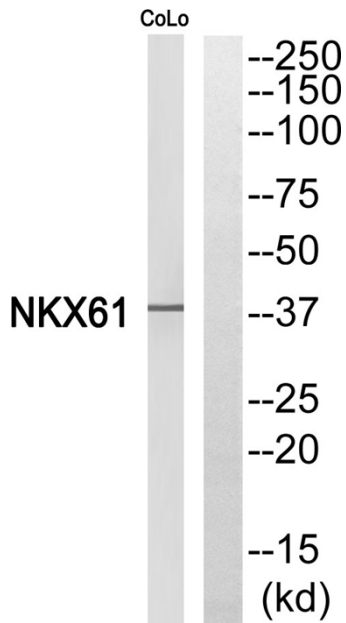
Nanjing BYabscience technology Co.,Ltd



Usage suggestions

This product can be used in immunological reaction related experiments. For more information, please consult technical personnel.

Products Images



Western blot analysis of NKX61 Antibody. The lane on the right is blocked with the NKX61 peptide.