



# Nkx-2.6 Polyclonal Antibody

<b>Catalog No</b>	BYab-15782
<b>Isotype</b>	IgG
<b>Reactivity</b>	Human;Rat;Mouse;
<b>Applications</b>	WB;ELISA
<b>Gene Name</b>	NKX2-6
<b>Protein Name</b>	Homeobox protein Nkx-2.6
<b>Immunogen</b>	The antiserum was produced against synthesized peptide derived from human NKX26. AA range:91-140
<b>Specificity</b>	Nkx-2.6 Polyclonal Antibody detects endogenous levels of Nkx-2.6 protein.
<b>Formulation</b>	Liquid in PBS containing 50% glycerol, 0.5% BSA and 0.02% sodium azide.
<b>Source</b>	Polyclonal, Rabbit,IgG
<b>Purification</b>	The antibody was affinity-purified from rabbit antiserum by affinity-chromatography using epitope-specific immunogen.
<b>Dilution</b>	Western Blot: 1/500 - 1/2000. ELISA: 1/40000. Not yet tested in other applications.
<b>Concentration</b>	1 mg/ml
<b>Purity</b>	≥90%
<b>Storage Stability</b>	-20°C/1 year
<b>Synonyms</b>	NKX2-6; NKX2F; Homeobox protein Nkx-2.6; Homeobox protein NK-2 homolog F
<b>Observed Band</b>	28kD
<b>Cell Pathway</b>	Nucleus .
<b>Tissue Specificity</b>	
<b>Function</b>	
<b>Background</b>	This gene encodes a homeobox-containing protein that belongs to the NK-2 homeobox family. This protein is a vertebrate homolog of <i>Drosophila</i> homeobox-containing protein called 'tinman', which has been shown to be essential for development of the heart-like dorsal vessel. In conjunction with related gene, NKX2-5, this gene may play a role in both pharyngeal and cardiac embryonic development. Mutations in this gene are associated with persistent truncus arteriosus.[provided by RefSeq, Aug 2011],

Nanjing BYabscience technology Co.,Ltd



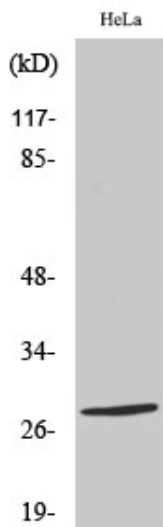
**matters needing attention**

Avoid repeated freezing and thawing!

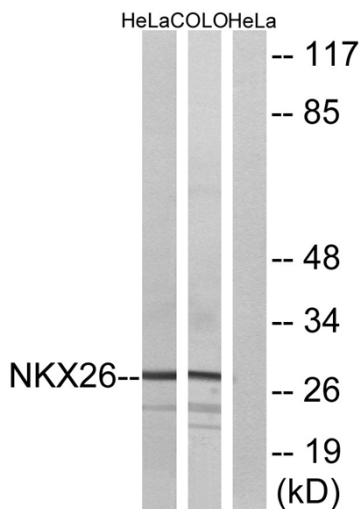
**Usage suggestions**

This product can be used in immunological reaction related experiments. For more information, please consult technical personnel.

## Products Images

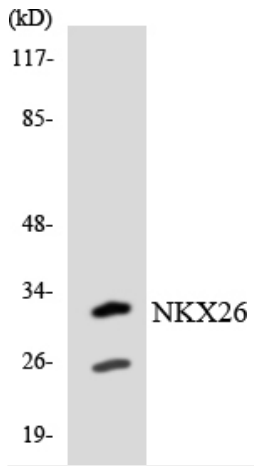


Western Blot analysis of various cells using Nkx-2.6 Polyclonal Antibody diluted at 1:500



Western blot analysis of lysates from HeLa and COLO cells, using NKX26 Antibody. The lane on the right is blocked with the synthesized peptide.

Nanjing BYabscience technology Co.,Ltd



Western blot analysis of the lysates from Jurkat cells using NKX26 antibody.