



Meis1 Polyclonal Antibody

Catalog No	BYab-15777
Isotype	IgG
Reactivity	Human;Mouse
Applications	WB;IHC
Gene Name	MEIS1
Protein Name	Homeobox protein Meis1
Immunogen	The antiserum was produced against synthesized peptide derived from human Meis1. AA range:229-278
Specificity	Meis1 Polyclonal Antibody detects endogenous levels of Meis1 protein.
Formulation	Liquid in PBS containing 50% glycerol, 0.5% BSA and 0.02% sodium azide.
Source	Polyclonal, Rabbit,IgG
Purification	The antibody was affinity-purified from rabbit antiserum by affinity-chromatography using epitope-specific immunogen.
Dilution	WB 1:500-2000;IHC-p 1:50-300
Concentration	1 mg/ml
Purity	≥90%
Storage Stability	-20°C/1 year
Synonyms	MEIS1; Homeobox protein Meis1
Observed Band	37kD
Cell Pathway	Nucleus .
Tissue Specificity	Expressed at low level in normal immunohepatopoietic tissues, including the fetal liver. Expressed in a subset of myeloid leukemia cell lines, with the highest expression seen in those with a megakaryocytic-erythroid phenotype. Also expressed at high levels in the cerebellum.
Function	function:Acts as a transcriptional regulator of PAX6. Acts as a transcriptional activator of PF4 in complex with PBX1 or PBX2. Required for hematopoiesis, megakaryocyte lineage development and vascular patterning. May function as a cofactor for HOXA7 and HOXA9 in the induction of myeloid leukemias.,similarity:Belongs to the TALE/MEIS homeobox family.,similarity:Contains 1 homeobox DNA-binding domain.,subunit:Interacts with the N-terminal region of PBX1 to form a heterodimer which binds DNA including a cAMP-responsive sequence in CYP17. Also forms heterodimers with PBX2. Forms heterotrimers with PBX1 or PBX2 and a number of HOX proteins

Nanjing BYabscience technology Co.,Ltd



including HOXA9, HOXD4 and HOXD9 where it acts as a non-DNA-binding partner. Also forms heterotrimers with PBX1 and HOX proteins including HOXD9 and HOXD10 where PBX1 is the non-DNA-binding partner.,tissue specificity:Expressed at low level in normal immun

Background

Homeobox genes, of which the most well-characterized category is represented by the HOX genes, play a crucial role in normal development. In addition, several homeoproteins are involved in neoplasia. This gene encodes a homeobox protein belonging to the TALE ('three amino acid loop extension') family of homeodomain-containing proteins. [provided by RefSeq, Jul 2008],

matters needing attention

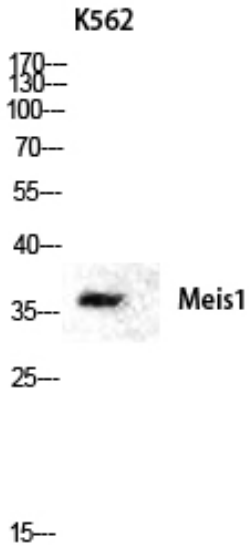
Avoid repeated freezing and thawing!

Usage suggestions

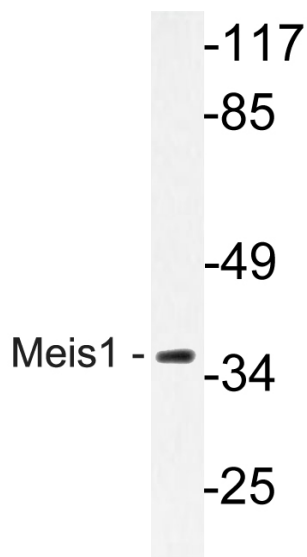
This product can be used in immunological reaction related experiments. For more information, please consult technical personnel.



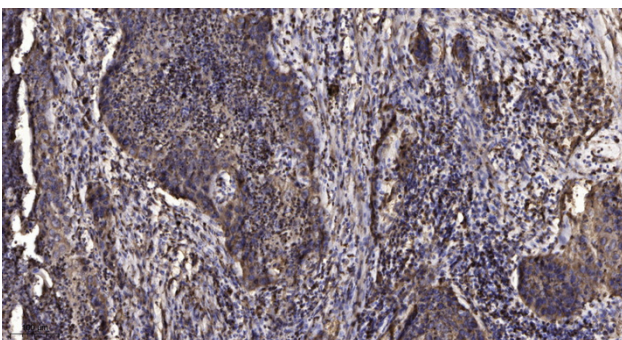
Products Images



Western blot analysis of K562 lysis using Meis1 antibody. Antibody was diluted at 1:1000 cells nucleus extracted by Minute TM Cytoplasmic and Nuclear Fractionation kit (SC-003, Inventbiotech, MN, USA).



Western blot analysis of lysate from Jurkat cells, using Meis1 antibody.



Immunohistochemical analysis of paraffin-embedded human Squamous cell carcinoma of lung. 1, Antibody was diluted at 1:200(4° overnight). 2, Tris-EDTA, pH9.0 was used for antigen retrieval. 3, Secondary antibody was diluted at 1:200(room temperature, 45min).

Nanjing BYabscience technology Co.,Ltd



Nanjing BYabscience technology Co.,Ltd

网址: www.njbybio.com

官方热线: 025-5229-8998

监督电话: 15950492658