



CDX2 Monoclonal Antibody(14H6)

Catalog No	BYab-15743
Isotype	IgG
Reactivity	Human;Mouse;Rat
Applications	WB;IF;IHC
Gene Name	CDX2
Protein Name	Homeobox protein CDX-2
Immunogen	Synthetic Peptide of CDX2
Specificity	The antibody detects endogenous CDX2 proteins.
Formulation	PBS, pH 7.4, containing 0.5%BSA, 0.02% sodium azide as Preservative and 50% Glycerol.
Source	Monoclonal, Mouse
Purification	The antibody was affinity-purified from mouse ascites by affinity-chromatography using specific immunogen.
Dilution	WB: 1:1000 IHC: 1:200 IF 1:200
Concentration	1 mg/ml
Purity	≥90%
Storage Stability	-20°C/1 year
Synonyms	CDX2; CDX3; Homeobox protein CDX-2; CDX-3; Caudal-type homeobox protein 2
Observed Band	42kD
Cell Pathway	Nucleus .
Tissue Specificity	Detected in small intestine, colon and pancreas.
Function	function:Involved in the transcriptional regulation of multiple genes expressed in the intestinal epithelium. Important in broad range of functions from early differentiation to maintenance of the intestinal epithelial lining of both the small and large intestine.,PTM:Phosphorylation of Ser-60 mediates the transactivation capacity.,similarity:Belongs to the Caudal homeobox family.,similarity:Contains 1 homeobox DNA-binding domain.,
Background	This gene is a member of the caudal-related homeobox transcription factor gene family. The encoded protein is a major regulator of intestine-specific genes involved in cell growth an differentiation. This protein also plays a role in early embryonic development of the intestinal tract. Aberrant expression of this gene is

Nanjing BYabscience technology Co.,Ltd



associated with intestinal inflammation and tumorigenesis. [provided by RefSeq, Jan 2012],

matters needing attention

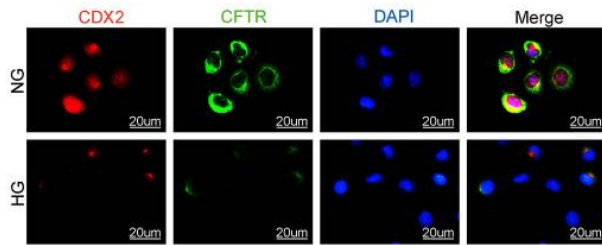
Avoid repeated freezing and thawing!

Usage suggestions

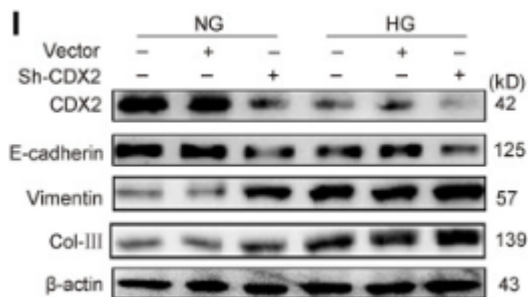
This product can be used in immunological reaction related experiments. For more information, please consult technical personnel.



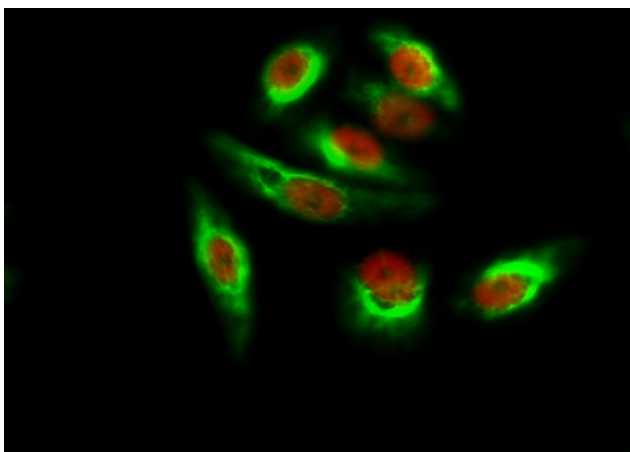
Products Images



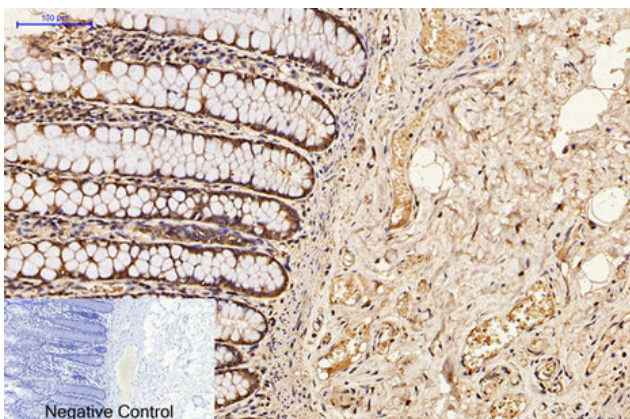
Liu, Huiming, et al. "The role of CDX2 in renal tubular lesions during diabetic kidney disease." *Aging (Albany NY)* 13.5 (2021): 6782.



Liu, Huiming, et al. "The role of CDX2 in renal tubular lesions during diabetic kidney disease." *Aging (Albany NY)* 13.5 (2021): 6782.

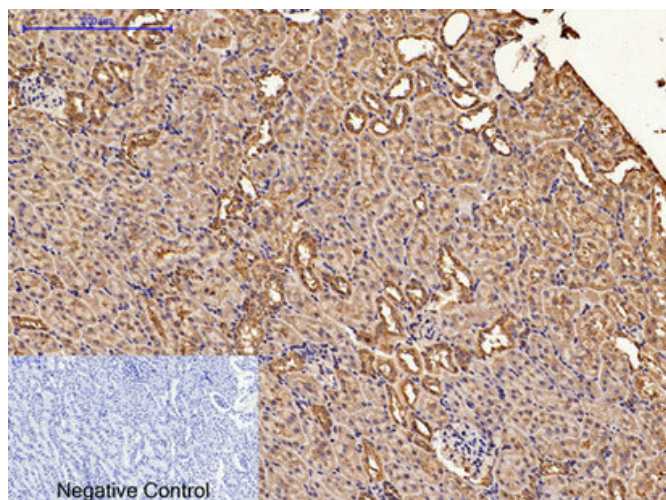


Immunofluorescence analysis of Hela cell. 1, Amyloid- β Polyclonal Antibody (green) was diluted at 1:200 (4 $^{\circ}$ overnight). (red) was diluted at 1:200 (4 $^{\circ}$ overnight). 2, Goat Anti Rabbit Alexa Fluor 488 Catalog: RS3211 was diluted at 1:1000 (room temperature, 50min). Goat Anti Mouse Alexa Fluor 594 Catalog: RS3608 was diluted at 1:1000 (room temperature, 50min).



Immunohistochemical analysis of paraffin-embedded Human-colon tissue. 1, CDX2 Monoclonal Antibody (14H6) was diluted at 1:200 (4 $^{\circ}$ C, overnight). 2, Sodium citrate pH 6.0 was used for antibody retrieval (>98 $^{\circ}$ C, 20min). 3, Secondary antibody was diluted at 1:200 (room temperature, 30min). Negative control was used by secondary antibody only.

Nanjing BYabscience technology Co.,Ltd



Immunohistochemical analysis of paraffin-embedded Rat-kidney tissue. 1, CDX2 Monoclonal Antibody(14H6) was diluted at 1:200(4°C, overnight). 2, Sodium citrate pH 6.0 was used for antibody retrieval(>98°C, 20min). 3, Secondary antibody was diluted at 1:200(room temperature, 30min). Negative control was used by secondary antibody only.