



Pax-4 Monoclonal Antibody

Catalog No	BYab-15737
Isotype	IgG
Reactivity	Human
Applications	WB;ELISA
Gene Name	PAX4
Protein Name	Paired box protein Pax-4
Immunogen	Purified recombinant fragment of human Pax-4 expressed in E. Coli.
Specificity	Pax-4 Monoclonal Antibody detects endogenous levels of Pax-4 protein.
Formulation	Ascitic fluid containing 0.03% sodium azide,0.5% BSA, 50%glycerol.
Source	Monoclonal, Mouse
Purification	Affinity purification
Dilution	Western Blot: 1/500 - 1/2000. ELISA: 1/10000. Not yet tested in other applications.
Concentration	1 mg/ml
Purity	≥90%
Storage Stability	-20°C/1 year
Synonyms	PAX4; Paired box protein Pax-4
Observed Band	
Cell Pathway	Nucleus.
Tissue Specificity	Colon,Insulinoma,PCR rescued clones,Placenta,
Function	disease:Defects in PAX4 are a cause of noninsulin-dependent diabetes mellitus (NIDDM) [MIM:125853]; also known as diabetes mellitus type 2 or maturity-onset diabetes. NIDDM is characterized by an autosomal dominant mode of inheritance, onset during adulthood and insulin resistance.,disease:Defects in PAX4 are the cause of maturity-onset diabetes of the young type 9 (MODY9) [MIM:612225]. MODY [MIM:606391] is a form of diabetes mellitus characterized by an autosomal dominant mode of inheritance, age of onset of 25 years or younger and a primary defect in insulin secretion.,disease:Genetic variations in PAX4 are associated with susceptibility to insulin-dependent diabetes mellitus (IDDM) [MIM:222100]. IDDM normally starts in childhood or adolescence and is caused by the body's own immune system which destroys the insulin-producing beta cells in the pancreas. Classical features are polydipsi

Nanjing BYabscience technology Co.,Ltd



Background

This gene is a member of the paired box (PAX) family of transcription factors. Members of this gene family typically contain a paired box domain, an octapeptide, and a paired-type homeodomain. These genes play critical roles during fetal development and cancer growth. The paired box 4 gene is involved in pancreatic islet development and mouse studies have demonstrated a role for this gene in differentiation of insulin-producing beta cells. [provided by RefSeq, Jul 2008],

matters needing attention

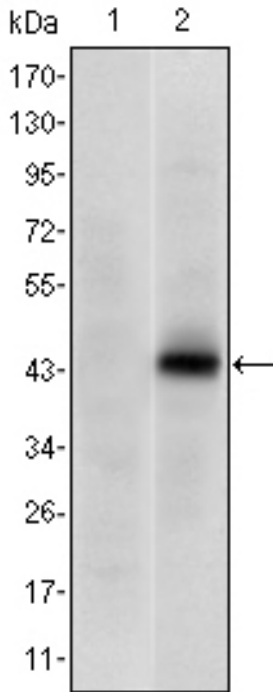
Avoid repeated freezing and thawing!

Usage suggestions

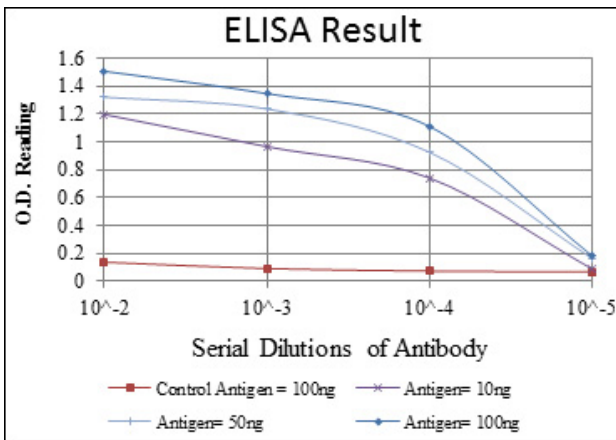
This product can be used in immunological reaction related experiments. For more information, please consult technical personnel.



Products Images



Western Blot analysis using Pax-4 Monoclonal Antibody against HEK293 (1) and PAX4-hlgGfc transfected HEK293 (2) cell lysate.



Nanjing BYabscience technology Co.,Ltd