



S100P (ABT375) Mouse mAb

Catalog No	BYab-15693
Isotype	IgG
Reactivity	Human
Applications	IHC
Gene Name	S100P S100E
Protein Name	MIG9;Migration inducing gene 9;Protein S100-E;Protein S100-P;Protein S100P;S100 calcium binding protein P;S100 calcium-binding protein P;S100 P;S100E;S100P;S100P_HUMAN
Immunogen	Synthesized peptide derived from human S100P
Specificity	The antibody can specifically recognize human S100P protein.
Formulation	PBS, pH7.2, 0.03% Porcolin 300, containing stabilizing protein
Source	Mouse, Monoclonal/IgG1, Kappa
Purification	The antibody was affinity-purified from mouse ascites by affinity-chromatography using specific immunogen.
Dilution	IHC-p 1:200-400,
Concentration	1 mg/ml
Purity	≥90%
Storage Stability	-20°C/1 year
Synonyms	MIG9;Migration inducing gene 9;Protein S100-E;Protein S100-P;Protein S100P;S100 calcium binding protein P;S100 calcium-binding protein P;S100 P;S100E;S100P;S100P_HUMAN
Observed Band	
Cell Pathway	Nuclear, Cytoplasmic
Tissue Specificity	Placenta/ Appendix
Function	miscellaneous:This protein binds two calcium ions.,similarity:Belongs to the S-100 family.,similarity:Contains 2 EF-hand domains.,subcellular location:Colocalizes with S100PBP in the nucleus.,subunit:Homodimer. Interacts with S100PBP and S100Z.,tissue specificity:Up-regulated in various pancreatic ductal adenocarcinomas and pancreatic intraepithelial neoplasias.,
Background	The protein encoded by this gene is a member of the S100 family of proteins containing 2 EF-hand calcium-binding motifs. S100 proteins are localized in the cytoplasm and/or nucleus of a wide range of cells, and involved in the regulation

Nanjing BYabscience technology Co.,Ltd



of a number of cellular processes such as cell cycle progression and differentiation. S100 genes include at least 13 members which are located as a cluster on chromosome 1q21; however, this gene is located at 4p16. This protein, in addition to binding Ca^{2+} , also binds Zn^{2+} and Mg^{2+} . This protein may play a role in the etiology of prostate cancer. [provided by RefSeq, Jul 2008],

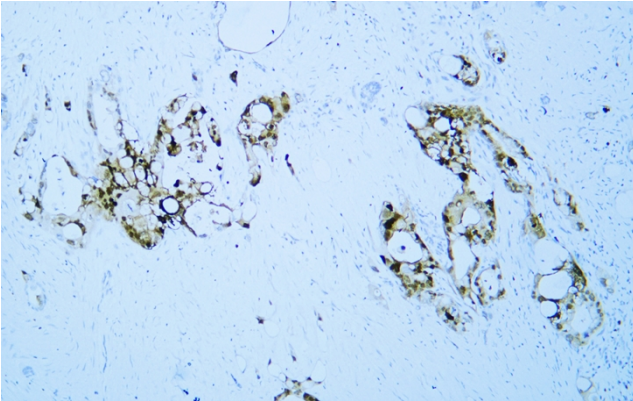
matters needing attention

Avoid repeated freezing and thawing!

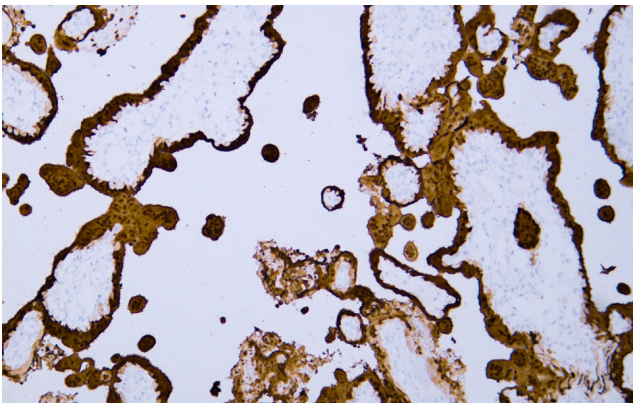
Usage suggestions

This product can be used in immunological reaction related experiments. For more information, please consult technical personnel.

Products Images



Human pancreatic cancer tissue was stained with Anti-S100P (ABT375) Antibody



Human placenta tissue was stained with Anti-S100P (ABT375) Antibody