



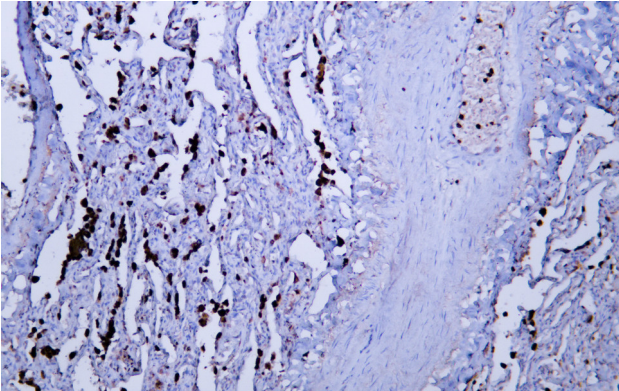
Lysozyme mouse mAb(ABT191)

Catalog No	BYab-15598
Isotype	IgG
Reactivity	Human;Mouse;Rat
Applications	IHC;WB;IF
Gene Name	LYZ LZM
Protein Name	Lysozyme
Immunogen	Synthesized peptide derived from human Lysozyme
Specificity	The antibody can specifically recognize human Lysozyme protein.
Formulation	Liquid in PBS containing 50% glycerol, 0.5% BSA and 0.156% sodium azide.
Source	Mouse, Monoclonal/IgG3, Kappa
Purification	The antibody was affinity-purified from mouse ascites by affinity-chromatography using specific immunogen.
Dilution	IHC-p 1:100-500, WB 1:200-1000, IF 1:100-500
Concentration	1 mg/ml
Purity	≥90%
Storage Stability	-20°C/1 year
Synonyms	Lysozyme C (EC 3.2.1.17;1,4-beta-N-acetylmuramidase C)
Observed Band	
Cell Pathway	Secreted.
Tissue Specificity	
Function	ERROR 42
Background	ERROR 42
matters needing attention	Avoid repeated freezing and thawing!
Usage suggestions	This product can be used in immunological reaction related experiments. For more information, please consult technical personnel.

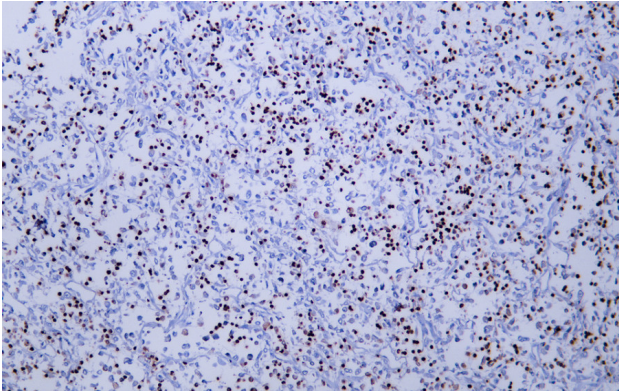
Nanjing BYabscience technology Co.,Ltd



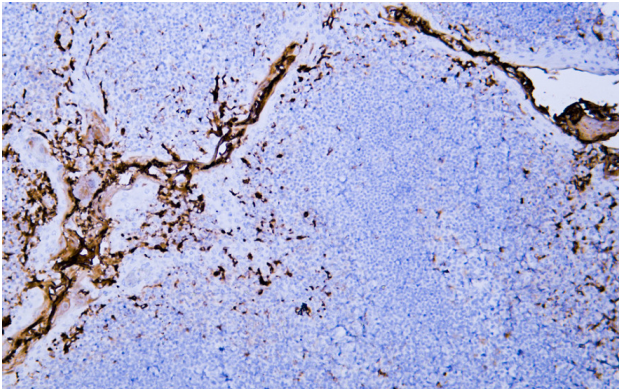
Products Images



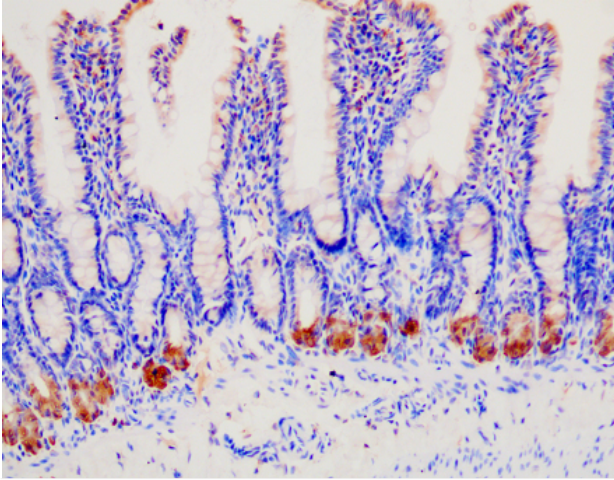
Human lung tissue was stained with Anti-Lysozyme (ABT191) Antibody



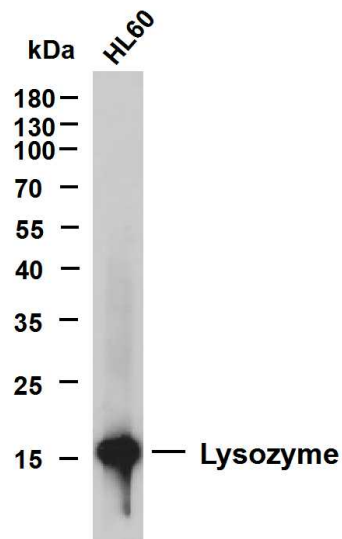
Human malignant fibrous histiocytoma tissue was stained with Anti-Lysozyme (ABT191) Antibody



Human tonsil tissue was stained with Anti-Lysozyme (ABT191) Antibody



Immunohistochemical analysis of rat-colon tissue. 1, primary Antibody was diluted at 1:200(4°C, overnight). HRP labeled Secondary antibody room temperature, 50min(Cat: RS0033).



HL60 whole cell lysates were separated by 12% SDS-PAGE, and the membrane was blotted with anti-Lysozyme(ABT191) antibody. The HRP-conjugated Goat anti-Mouse IgG(H + L) antibody was used to detect the antibody. Lane 1: HL60 Predicted band size: 17kDa Observed band size: 17kDa