



Cytokeratin Pan mouse mAb(ABT154)

Catalog No	BYab-15528
Isotype	IgG
Reactivity	Human;Mouse;Rat
Applications	IHC;WB;IF
Gene Name	CK pan; CK-pan
Protein Name	Cytokeratin Pan
Immunogen	Synthesized peptide derived from human Cytokeratin Pan
Specificity	The antibody can recognize multiple human Cytokeratins, including CK10, 13, 14, 15, 16, 18, 19, and it can be used for immunohistochemical detection of tumors from monolayer and multilayered epithel
Formulation	Liquid in PBS containing 50% glycerol, 0.5% BSA and 0.94% sodium azide.
Source	Mouse, Monoclonal/IgG1, Kappa
Purification	The antibody was affinity-purified from mouse ascites by affinity-chromatography using specific immunogen.
Dilution	IHC-p 1:100-500, WB 1:200-1000, IF 1:100-500
Concentration	1 mg/ml
Purity	≥90%
Storage Stability	-20°C/1 year
Synonyms	ERROR 42
Observed Band	
Cell Pathway	Cell junction, adherens junction . Cell membrane ; Single-pass type I membrane protein. Endosome. Golgi apparatus, trans-Golgi network. Colocalizes with DLGAP5 at sites of cell-cell contact in intestinal epithelial cells. Anchored to actin microfilaments through association with alpha-, beta- and gamma-catenin. Sequential proteolysis induced by apoptosis or calcium influx, results in translocation from sites of cell-cell contact to the cytoplasm. Colocalizes with RAB11A endosomes during its transport from the Golgi apparatus to the plasma membrane.
Tissue Specificity	Non-neural epithelial tissues.
Function	ERROR 42
Background	ERROR 42

Nanjing BYabscience technology Co.,Ltd



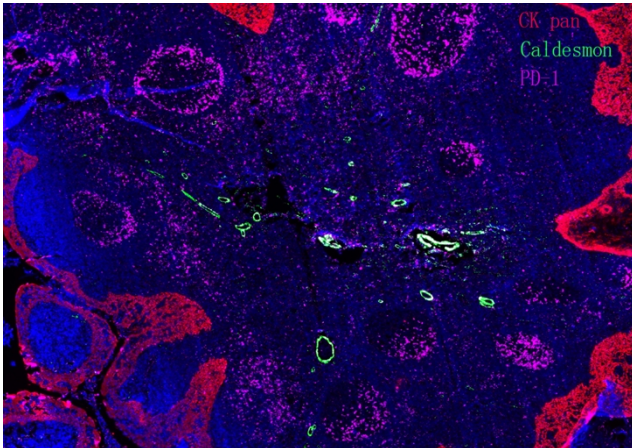
matters needing attention

Avoid repeated freezing and thawing!

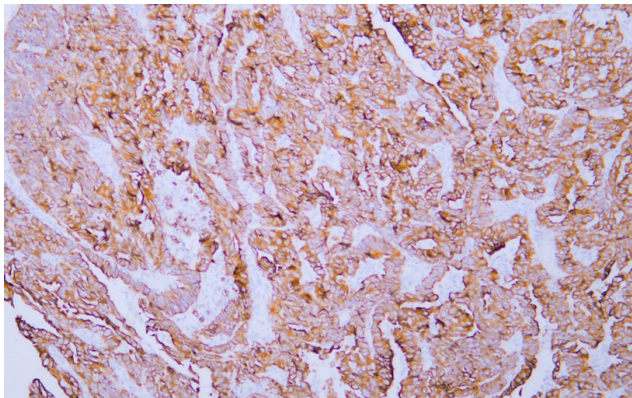
Usage suggestions

This product can be used in immunological reaction related experiments. For more information, please consult technical personnel.

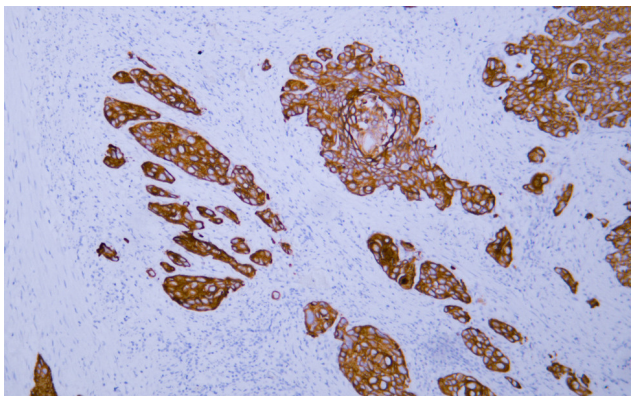
Products Images



Fluorescence multiplex immunohistochemical analysis of normal human appendix tissue (formalin-fixed paraffin-embedded section). The section was incubated in 3 rounds of staining; in the order of CK PAN .(Catalog no:YM6815 1/200 dilution), PD-1.(Catalog no: YM6208 1/200 dilution), Caldesmon pan. (Catalog no:YM6826 1/200 dilution),each using a separate fluorescent tyramide signal amplification system : Treble-Fluorescence immunohistochemical mouse/rabbit kit Catalog NO: RS0035 (pH9.0)

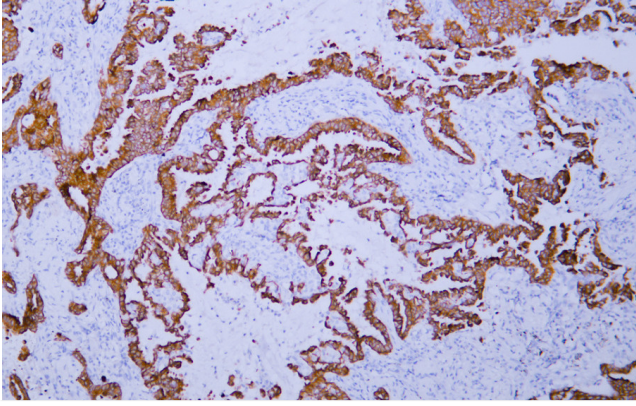


Human endometrial adenocarcinoma tissue was stained with Anti-Cytokeratin (ABT154) Antibody

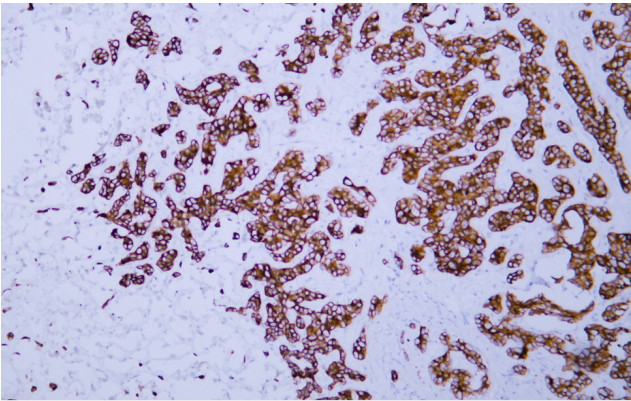


Human esophageal squamous cell carcinoma tissue was stained with Anti-Cytokeratin (ABT154) Antibody

Nanjing BYabscience technology Co.,Ltd



Human hepatocellular carcinoma tissue was stained with Anti-Cytokeratin (ABT154) Antibody



Human lung adenocarcinoma tissue was stained with Anti-Cytokeratin (ABT154) Antibody