



S100A4 rabbit mAb(ABT178R)

Catalog No	BYab-15499
Isotype	IgG
Reactivity	Human
Applications	IHC;IF
Gene Name	S100A4 CAPL MTS1
Protein Name	S100A4
Immunogen	Synthesized peptide derived from human S100A4
Specificity	This antibody detects endogenous levels of S100A4 at Human
Formulation	Liquid in PBS containing 50% glycerol, 0.5% BSA and 0.02% sodium azide.
Source	Polyclonal, Rabbit,IgG
Purification	The antibody was affinity-purified from Cell supernatant by affinity-chromatography using specific immunogen.
Dilution	IHC-p 1:200. IF 1:50-200
Concentration	1 mg/ml
Purity	≥90%
Storage Stability	-20°C/1 year
Synonyms	Protein S100-A4 (Calvasculin;Metastasin;Placental calcium-binding protein;Protein Mts1;S100 calcium-binding protein A4)
Observed Band	
Cell Pathway	Secreted . Nucleus . Cytoplasm .
Tissue Specificity	Ubiquitously expressed.
Function	similarity:Belongs to the S-100 family.,similarity:Contains 2 EF-hand domains.,subunit:Homodimer. Interacts with PPFIBP1 in a calcium-dependent mode.,tissue specificity:Ubiquitously expressed.,
Background	
matters needing attention	Avoid repeated freezing and thawing!

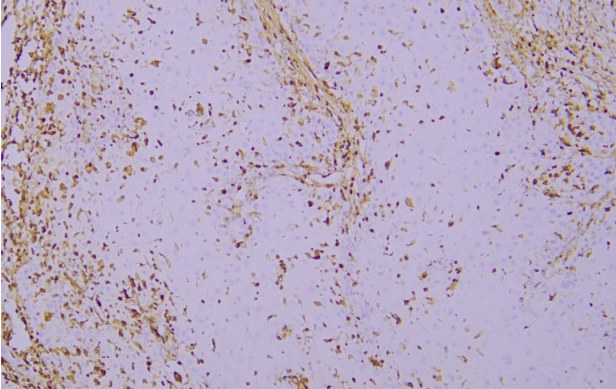
Nanjing BYabscience technology Co.,Ltd



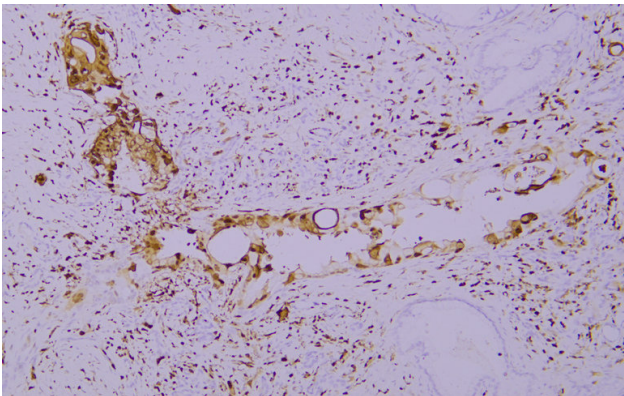
Usage suggestions

This product can be used in immunological reaction related experiments. For more information, please consult technical personnel.

Products Images



Immunohistochemical analysis of paraffin-embedded human Cutaneous squamous carcinoma. 1, Antibody was incubated at 4° overnight. 2, Citrate buffer of pH6.0 was used for antigen retrieval. 3, Secondary antibody was diluted at 1:200(room temperature, 30min).



Immunohistochemical analysis of paraffin-embedded human Pancreatic carcinoma. 1, Antibody was incubated at 4° overnight. 2, Citrate buffer of pH6.0 was used for antigen retrieval. 3, Secondary antibody was diluted at 1:200(room temperature, 30min).