



COX-2 rabbit mAb(ABT31R)

Catalog No	BYab-15492
Isotype	IgG
Reactivity	Human
Applications	IHC;IF
Gene Name	PTGS2 COX2
Protein Name	COX-2
Immunogen	Synthesized peptide derived from human COX-2
Specificity	This antibody detects endogenous levels of COX-2 at Human
Formulation	Liquid in PBS containing 50% glycerol, 0.5% BSA and 0.02% sodium azide.
Source	Polyclonal, Rabbit,IgG
Purification	The antibody was affinity-purified from Cell supernatant by affinity-chromatography using specific immunogen.
Dilution	IHC-p 1:100. IF 1:50-200
Concentration	1 mg/ml
Purity	≥90%
Storage Stability	-20°C/1 year
Synonyms	Prostaglandin G/H synthase 2 (EC 1.14.99.1;Cyclooxygenase-2;COX-2;PHS II;Prostaglandin H2 synthase 2;PGH synthase 2;PGHS-2;Prostaglandin-endoperoxide synthase 2)
Observed Band	
Cell Pathway	Microsome membrane ; Peripheral membrane protein. Endoplasmic reticulum membrane ; Peripheral membrane protein. Nucleus inner membrane ; Peripheral membrane protein. Nucleus outer membrane ; Peripheral membrane protein. Detected on the luminal side of the endoplasmic reticulum and nuclear envelope.
Tissue Specificity	Endothelial cell,Epidermal keratinocytes in primary culture,Lung,Pe
Function	catalytic activity:Arachidonate + AH(2) + 2 O(2) = prostaglandin H(2) + A + H(2)O.,cofactor:Binds 1 heme B (iron-protoporphyrin IX) group per subunit.,disease:Likely to play a role in inflammatory diseases such as rheumatoid arthritis.,function:May have a role as a major mediator of inflammation and/or a role for prostanoid signaling in activity-dependent plasticity.,induction:By cytokines and mitogens.,miscellaneous:This enzyme acts both as a dioxygenase

Nanjing BYabscience technology Co.,Ltd



and as a peroxidase.,miscellaneous:This enzyme is the target of nonsteroidal anti-inflammatory drugs such as aspirin.,pathway:Lipid metabolism; prostaglandin biosynthesis.,similarity:Belongs to the prostaglandin G/H synthase family.,similarity:Contains 1 EGF-like domain.,subunit:Homodimer.,

Background

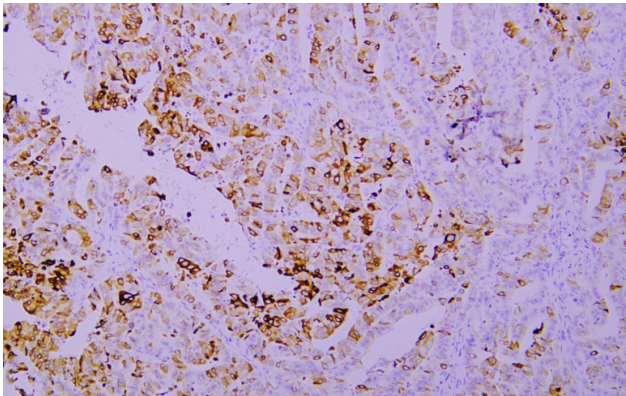
matters needing attention

Avoid repeated freezing and thawing!

Usage suggestions

This product can be used in immunological reaction related experiments. For more information, please consult technical personnel.

Products Images



Immunohistochemical analysis of paraffin-embedded human Colon carcinoma. 1, Antibody was incubated at 4° overnight. 2, TRIS-EDTA of pH9.0 was used for antigen retrieval. 3,Secondary antibody was diluted at 1:200(room temperature, 30min).