



Myoglobin mouse mAb(ABT-MYG)

Catalog No	BYab-15478
Isotype	IgG
Reactivity	Human; Predict react with Mouse, Rat
Applications	IHC;IF
Gene Name	MB
Protein Name	Myoglobin
Immunogen	Synthesized peptide derived from human Myoglobin
Specificity	This antibody detects endogenous levels of human Myoglobin, TRIS-EDTA of pH9.0 was used for Heat-induced epitope retrieval (HIER)
Formulation	Liquid in PBS containing 50% glycerol, 0.5% BSA and 0.02% sodium azide.
Source	Mouse, Monoclonal/IgG1, Kappa
Purification	The antibody was affinity-purified from mouse ascites by affinity-chromatography using specific immunogen.
Dilution	IHC-p 1:50-500. IF 1:50-200
Concentration	1 mg/ml
Purity	≥90%
Storage Stability	-20°C/1 year
Synonyms	Myoglobin
Observed Band	
Cell Pathway	
Tissue Specificity	
Function	function:Serves as a reserve supply of oxygen and facilitates the movement of oxygen within muscles.,similarity:Belongs to the globin family.,
Background	This gene encodes a member of the globin superfamily and is expressed in skeletal and cardiac muscles. The encoded protein is a haemoprotein contributing to intracellular oxygen storage and transcellular facilitated diffusion of oxygen. At least three alternatively spliced transcript variants encoding the same protein have been reported. [provided by RefSeq, Jul 2008],
matters needing attention	Avoid repeated freezing and thawing!

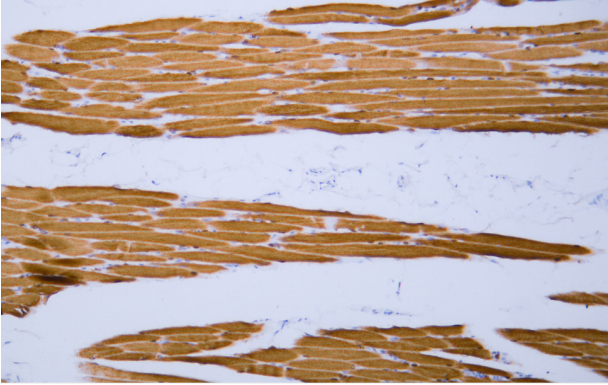
Nanjing BYabscience technology Co.,Ltd



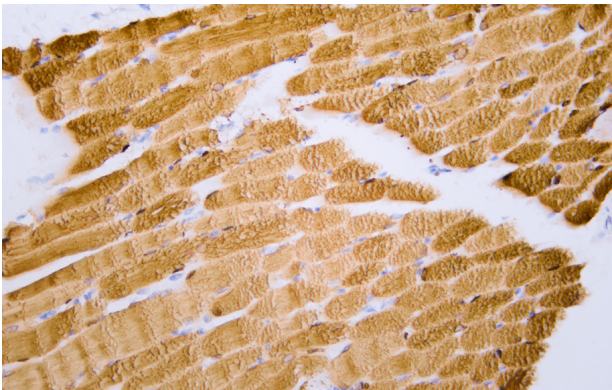
Usage suggestions

This product can be used in immunological reaction related experiments. For more information, please consult technical personnel.

Products Images



Human skeletal muscle tissue was stained with Anti-Myoglobin (ABT-MYG) Antibody



Human skeletal muscle tissue was stained with Anti-Myoglobin (ABT-MYG) Antibody