



# Mart-1/Melan-A mouse mAb(ABT-Mart1)

<b>Catalog No</b>	BYab-15463
<b>Isotype</b>	IgG
<b>Reactivity</b>	Human; Predict react with Mouse, Rat
<b>Applications</b>	IHC;IF
<b>Gene Name</b>	MLANA MART1
<b>Protein Name</b>	Mart-1/Melan-A
<b>Immunogen</b>	Synthesized peptide derived from human Mart-1/Melan-A
<b>Specificity</b>	This antibody detects endogenous levels of human Mart-1/Melan-A. Heat-induced epitope retrieval (HIER) TRIS-EDTA of pH9.0 was highly recommended as antigen repair method in paraffin section
<b>Formulation</b>	Liquid in PBS containing 50% glycerol, 0.5% BSA and 0.02% sodium azide.
<b>Source</b>	Mouse, Monoclonal/IgG2b, Kappa
<b>Purification</b>	The antibody was affinity-purified from mouse ascites by affinity-chromatography using specific immunogen.
<b>Dilution</b>	IHC-p 1:300-500. IF 1:50-200
<b>Concentration</b>	1 mg/ml
<b>Purity</b>	≥90%
<b>Storage Stability</b>	-20°C/1 year
<b>Synonyms</b>	Melanoma antigen recognized by T-cells 1 (MART-1;Antigen LB39-AA;Antigen SK29-AA;Protein Melan-A)
<b>Observed Band</b>	
<b>Cell Pathway</b>	Endoplasmic reticulum membrane; Single-pass type III membrane protein. Golgi apparatus. Golgi apparatus, trans-Golgi network membrane. Melanosome. Also found in small vesicles and tubules dispersed over the entire cytoplasm. A small fraction of the protein is inserted into the membrane in an inverted orientation. Inversion of membrane topology results in the relocalization of the protein from a predominant Golgi/post-Golgi area to the endoplasmic reticulum. Melanoma cells expressing the protein with an inverted membrane topology are more effectively recognized by specific cytolytic T-lymphocytes than those expressing the protein in its native membrane orientation.
<b>Tissue Specificity</b>	Expression is restricted to melanoma and melanocyte cell lines and retina.
<b>Function</b>	tissue specificity:Expression is restricted to melanoma and melanocyte cell lines and retina.,

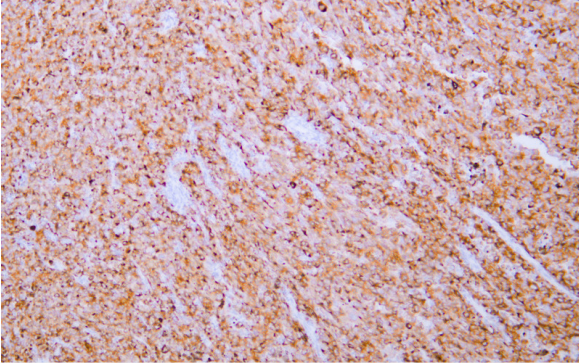
Nanjing BYabscience technology Co.,Ltd



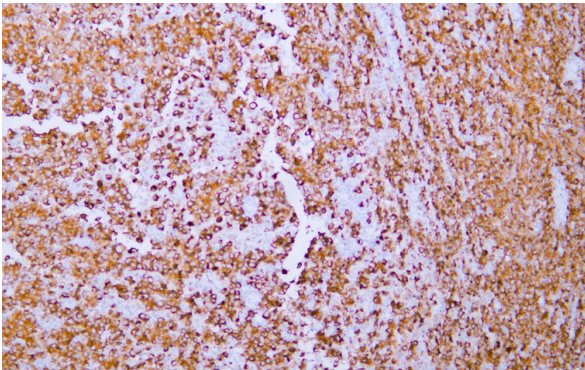
<b>Background</b>	tissue specificity:Expression is restricted to melanoma and melanocyte cell lines and retina.,
<b>matters needing attention</b>	Avoid repeated freezing and thawing!
<b>Usage suggestions</b>	This product can be used in immunological reaction related experiments. For more information, please consult technical personnel.



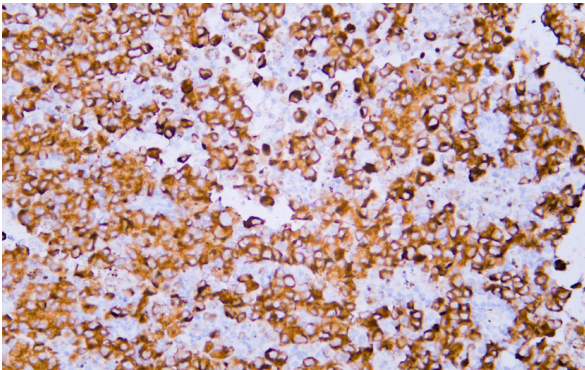
## Products Images



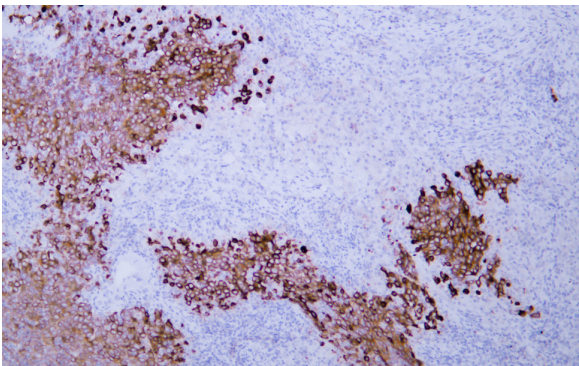
Human malignant mesothelioma tissue was stained with Anti-Melan-A (ABT-Mart1) Antibody



Human malignant mesothelioma tissue was stained with Anti-Melan-A (ABT-Mart1) Antibody



Human malignant mesothelioma tissue was stained with Anti-Melan-A (ABT-Mart1) Antibody



Human malignant mesothelioma tissue was stained with Anti-Melan-A (ABT-Mart1) Antibody