



# Actin, sarcomeric muscle (ABT-SCA) mouse mAb

<b>Catalog No</b>	BYab-15438
<b>Isotype</b>	IgG
<b>Reactivity</b>	Human
<b>Applications</b>	IHC;IF
<b>Gene Name</b>	ACTB ACTC1
<b>Protein Name</b>	Actin, sarcomeric muscle
<b>Immunogen</b>	Synthesized peptide derived from human Actin, sarcomeric muscle
<b>Specificity</b>	This antibody detects endogenous levels of human Actin, sarcomeric muscle. Heat-induced epitope retrieval (HIER) Citrate buffer of pH6.0 was highly recommended as antigen repair method in paraffin sec
<b>Formulation</b>	Liquid in PBS containing 50% glycerol, 0.5% BSA and 0.02% sodium azide.
<b>Source</b>	Mouse, Monoclonal/IgG1, Kappa
<b>Purification</b>	The antibody was affinity-purified from mouse ascites by affinity-chromatography using specific immunogen.
<b>Dilution</b>	IHC-p 1:100-500, WB 1:500-2000. IF 1:50-200
<b>Concentration</b>	1 mg/ml
<b>Purity</b>	≥90%
<b>Storage Stability</b>	-20°C/1 year
<b>Synonyms</b>	
<b>Observed Band</b>	
<b>Cell Pathway</b>	Cytoplasm, cytoskeleton.
<b>Tissue Specificity</b>	Epithelium,Skeletal muscle,
<b>Function</b>	disease:Defects in ACTA1 are a cause of congenital myopathy with excess of thin myofilaments (CM) [MIM:102610].,disease:Defects in ACTA1 are a cause of congenital myopathy with fiber-type disproportion (CFTD) [MIM:255310]; also known as congenital fiber-type disproportion myopathy (CFTDM). CFTD is a genetically heterogeneous disorder in which there is relative hypotrophy of type 1 muscle fibers compared to type 2 fibers on skeletal muscle biopsy. However, these findings are not specific and can be found in many different myopathic and neuropathic conditions.,disease:Defects in ACTA1 are the cause of nemaline myopathy type 3 (NEM3) [MIM:161800]. Nemaline myopathy (NEM) is a form of congenital myopathy characterized by abnormal thread- or rod-like structures in muscle fibers on histologic examination. The clinical phenotype is highly variable,

**Nanjing BYabscience technology Co.,Ltd**



with differing age at onset and severity.,func

**Background**

The product encoded by this gene belongs to the actin family of proteins, which are highly conserved proteins that play a role in cell motility, structure and integrity. Alpha, beta and gamma actin isoforms have been identified, with alpha actins being a major constituent of the contractile apparatus, while beta and gamma actins are involved in the regulation of cell motility. This actin is an alpha actin that is found in skeletal muscle. Mutations in this gene cause nemaline myopathy type 3, congenital myopathy with excess of thin myofilaments, congenital myopathy with cores, and congenital myopathy with fiber-type disproportion, diseases that lead to muscle fiber defects. [provided by RefSeq, Jul 2008],

**matters needing attention**

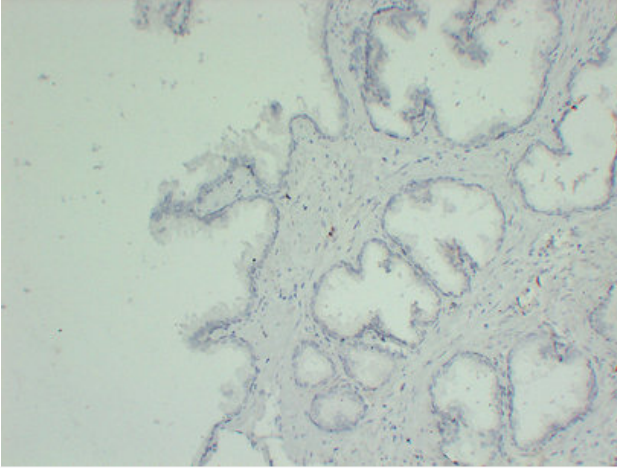
Avoid repeated freezing and thawing!

**Usage suggestions**

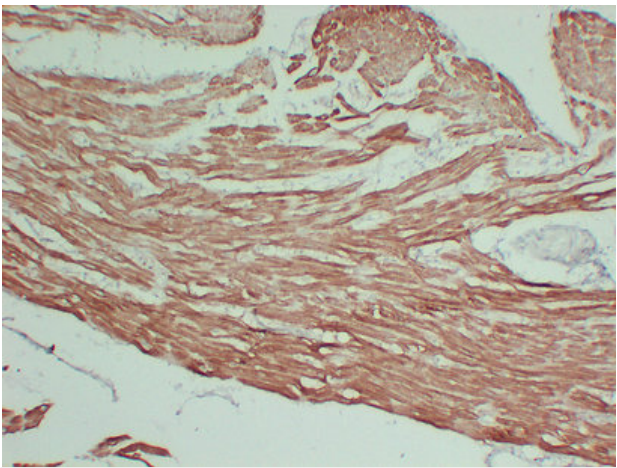
This product can be used in immunological reaction related experiments. For more information, please consult technical personnel.



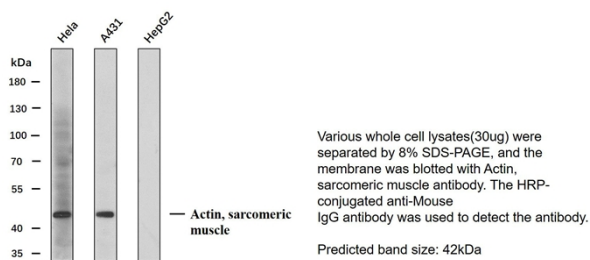
## Products Images



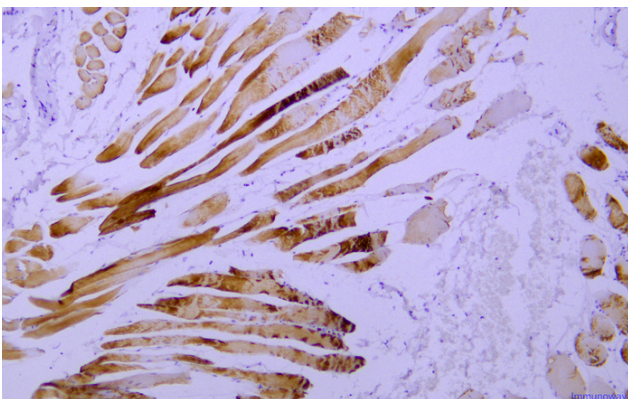
Immunohistochemical analysis of paraffin-embedded smooth muscle. 1, Antibody was diluted at 1:200(4° overnight). 2, Citrate buffer of pH6.0 was used for antigen retrieval. 3, Secondary antibody was diluted at 1:200(room temperature, 30min).



Immunohistochemical analysis of paraffin-embedded Myocardium. 1, Antibody was diluted at 1:200(4° overnight). 2, Citrate buffer of pH6.0 was used for antigen retrieval. 3, Secondary antibody was diluted at 1:200(room temperature, 30min).



Western blot analysis of Actin, sarcomeric muscle Antibody at 1:1000 dilution.



Immunohistochemical analysis of paraffin-embedded human skeletal muscle Antibody was diluted at 1:200(4° overnight).

**Nanjing BYabscience technology Co.,Ltd**



**Nanjing BYabscience technology Co.,Ltd**

网址: [www.njbybio.com](http://www.njbybio.com)

官方热线: 025-5229-8998

监督电话: 15950492658