



# S100A6 (ABT-S100A6) mouse mAb

<b>Catalog No</b>	BYab-15435
<b>Isotype</b>	IgG
<b>Reactivity</b>	Human; Predict react with Mouse, Rat
<b>Applications</b>	IHC;IF
<b>Gene Name</b>	S100A6 CACY
<b>Protein Name</b>	S100A6
<b>Immunogen</b>	Synthesized peptide derived from human S100A6
<b>Specificity</b>	This antibody detects endogenous levels of human S100A6. Heat-induced epitope retrieval (HIER) TRIS-EDTA of pH8.0 was highly recommended as antigen repair method in paraffin section
<b>Formulation</b>	Liquid in PBS containing 50% glycerol, 0.5% BSA and 0.02% sodium azide.
<b>Source</b>	Mouse, Monoclonal/IgG1, Kappa
<b>Purification</b>	The antibody was affinity-purified from mouse ascites by affinity-chromatography using specific immunogen.
<b>Dilution</b>	IHC-p 1:100-500. IF 1:50-200
<b>Concentration</b>	1 mg/ml
<b>Purity</b>	≥90%
<b>Storage Stability</b>	-20°C/1 year
<b>Synonyms</b>	
<b>Observed Band</b>	
<b>Cell Pathway</b>	Nucleus envelope. Cytoplasm. Cell membrane; Peripheral membrane protein; Cytoplasmic side.
<b>Tissue Specificity</b>	Brain,Fibroblast,Placenta,Platelet,
<b>Function</b>	induction:Preferentially expressed when quiescent fibroblasts are stimulated to proliferate. It is inducible by growth factors and overexpressed in acute myeloid leukemias.,miscellaneous:This protein co-purified with the prolactin receptor.,PTM:The N-terminus is blocked.,similarity:Belongs to the S-100 family.,similarity:Contains 2 EF-hand domains.,subunit:Homodimer, antiparallel. Interacts with SUGT1.,
<b>Background</b>	S100 calcium binding protein A6(S100A6) Homo sapiens The protein encoded by this gene is a member of the S100 family of proteins containing 2 EF-hand calcium-binding motifs. S100 proteins are localized in the cytoplasm and/or nucleus of a wide range of cells, and involved in the regulation of a number

Nanjing BYabscience technology Co.,Ltd



of cellular processes such as cell cycle progression and differentiation. S100 genes include at least 13 members which are located as a cluster on chromosome 1q21. This protein may function in stimulation of Ca<sup>2+</sup>-dependent insulin release, stimulation of prolactin secretion, and exocytosis. Chromosomal rearrangements and altered expression of this gene have been implicated in melanoma. [provided by RefSeq, Jul 2008],

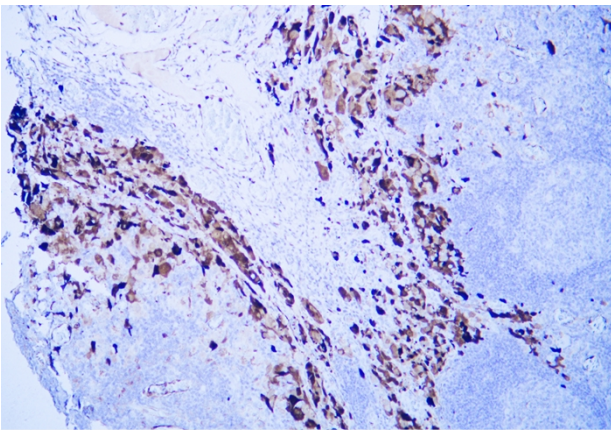
**matters needing attention**

Avoid repeated freezing and thawing!

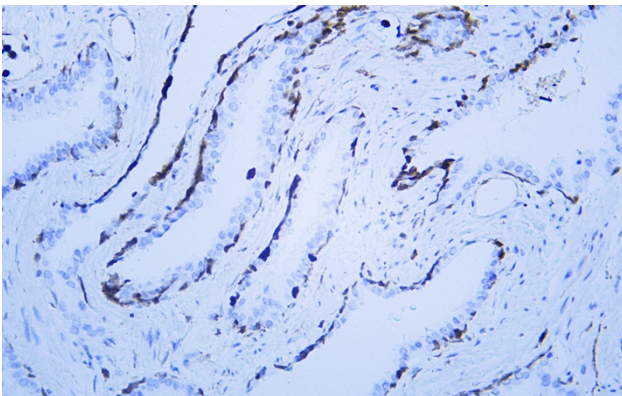
**Usage suggestions**

This product can be used in immunological reaction related experiments. For more information, please consult technical personnel.

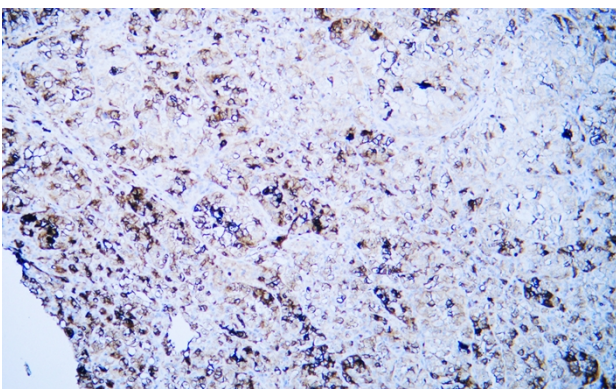
**Products Images**



Human malignant melanoma tissue was stained with Anti-S100A6 (ABT-S100A6) Antibody

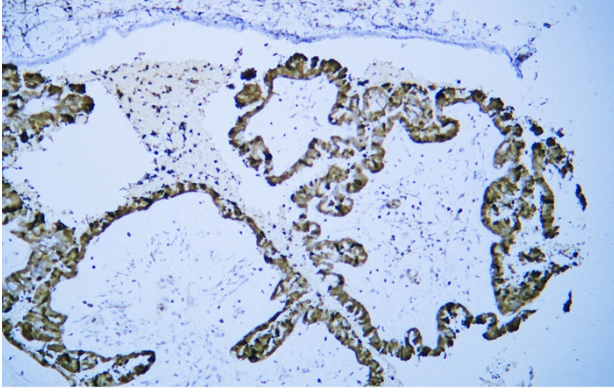


Human prostate tissue was stained with Anti-S100A6 (ABT-S100A6) Antibody

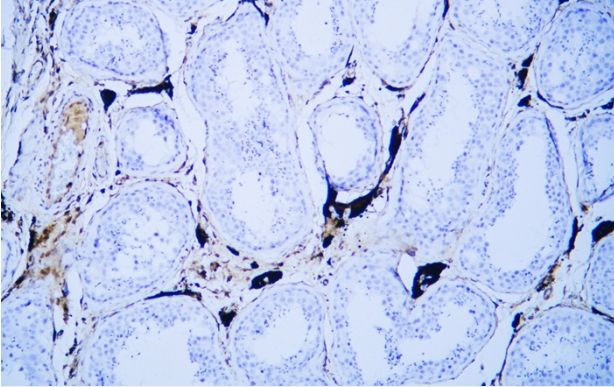


Human renal clear cell carcinoma tissue was stained with Anti-S100A6 (ABT-S100A6) Antibody

**Nanjing BYabscience technology Co.,Ltd**



Human serous papillary adenocarcinoma of ovary tissue was stained with Anti-S100A6 (ABT-S100A6) Antibody



Human testis tissue was stained with Anti-S100A6 (ABT-S100A6) Antibody