



# Gross cystic disease fluid protein-15 (GCDFP-15) (ABT-GCDFP15) mouse mAb

<b>Catalog No</b>	BYab-15428
<b>Isotype</b>	IgG
<b>Reactivity</b>	Human
<b>Applications</b>	IHC;IF
<b>Gene Name</b>	PIP GCDFP15 GPIP4
<b>Protein Name</b>	Gross cystic disease fluid protein-15 (GCDFP-15)
<b>Immunogen</b>	Synthesized peptide derived from human Gross cystic disease fluid protein-15 (GCDFP-15)
<b>Specificity</b>	This antibody detects endogenous levels of human Gross cystic disease fluid protein-15 (GCDFP-15). Heat-induced epitope retrieval (HIER) TRIS-EDTA of pH8.0 was highly recommended as antigen repair met
<b>Formulation</b>	Liquid in PBS containing 50% glycerol, 0.5% BSA and 0.02% sodium azide.
<b>Source</b>	Mouse, Monoclonal/IgG1, Kappa
<b>Purification</b>	The antibody was affinity-purified from mouse ascites by affinity-chromatography using specific immunogen.
<b>Dilution</b>	WB 500-2000 IHC-p 1:100-500. IF 1:50-200
<b>Concentration</b>	1 mg/ml
<b>Purity</b>	≥90%
<b>Storage Stability</b>	-20°C/1 year
<b>Synonyms</b>	
<b>Observed Band</b>	
<b>Cell Pathway</b>	Secreted.
<b>Tissue Specificity</b>	Expressed in pathological conditions of the mammary gland and in several exocrine tissues, such as the lacrimal, salivary, and sweat glands.
<b>Function</b>	induction:By prolactin and androgen; inhibited by estrogen.,similarity:Belongs to the PIP family.,subunit:Monomer. Interacts with AZGP1.,tissue specificity:Expressed in pathological conditions of the mammary gland and in several exocrine tissues, such as the lacrimal, salivary, and sweat glands.,
<b>Background</b>	induction:By prolactin and androgen; inhibited by estrogen.,similarity:Belongs to the PIP family.,subunit:Monomer. Interacts with AZGP1.,tissue specificity:Expressed in pathological conditions of the mammary gland and in

Nanjing BYabscience technology Co.,Ltd



several exocrine tissues, such as the lacrimal, salivary, and sweat glands.,

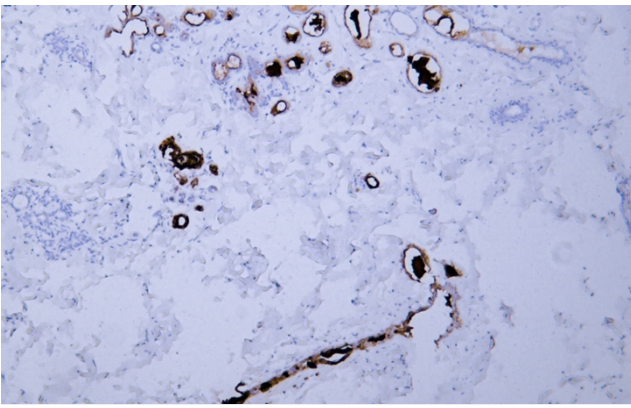
**matters needing attention**

Avoid repeated freezing and thawing!

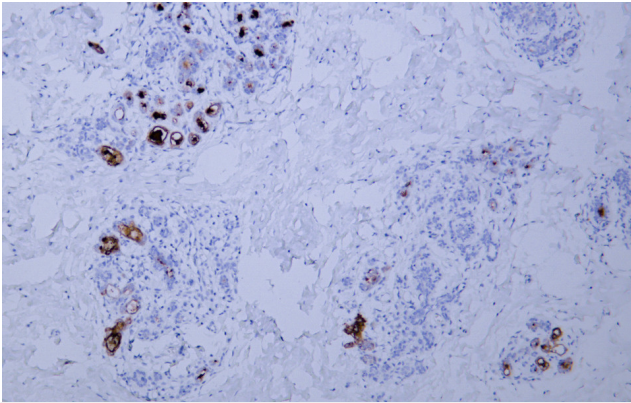
**Usage suggestions**

This product can be used in immunological reaction related experiments. For more information, please consult technical personnel.

## Products Images



Human breast tissue was stained with Anti-GCDFP-15 (ABT-GCDFP15) Antibody



Human breast tissue was stained with Anti-GCDFP-15 (ABT-GCDFP15) Antibody