



Thyroid-Stimulating Hormone(TSH) (ABT-TSH) mouse mAb

Catalog No	BYab-15334
Isotype	IgG
Reactivity	Human; Predict react with Mouse, Rat
Applications	IHC;IF
Gene Name	TSHB
Protein Name	Thyrotropin subunit beta (Thyroid-stimulating hormone subunit beta) (TSH-B) (TSH-beta) (Thyrotropin beta chain) (Thyrotropin alfa)
Immunogen	Synthesized peptide derived from human Thyroid-Stimulating Hormone(TSH)
Specificity	This antibody detects endogenous levels of human Thyroid-Stimulating Hormone(TSH). Heat-induced epitope retrieval (HIER) Citrate buffer of pH6.0 was highly recommended as antigen repair method in para
Formulation	Liquid in PBS containing 50% glycerol, 0.5% BSA and 0.02% sodium azide.
Source	Mouse, Monoclonal/IgG1, Lambda
Purification	The antibody was affinity-purified from mouse ascites by affinity-chromatography using specific immunogen.
Dilution	WB 500-2000 IHC-p 1:100-500. IF 1:50-200
Concentration	1 mg/ml
Purity	≥90%
Storage Stability	-20°C/1 year
Synonyms	
Observed Band	
Cell Pathway	Secreted.
Tissue Specificity	
Function	function:Indispensable for the control of thyroid structure and metabolism.,online information:Clinical information on Thyrogen,online information:Thyroid-stimulating hormone entry,pharmaceutical:Available under the name Thyrogen (Genzyme). Used in combination with other tests to detect recurring or leftover thyroid cancer cells in patients with a history of certain types of thyroid cancer.,similarity:Belongs to the glycoprotein hormones subunit beta family.,subunit:Heterodimer of a common alpha chain and a unique beta chain which confers biological specificity to thyrotropin, lutropin, follitropin and

Nanjing BYabscience technology Co.,Ltd



gonadotropin.,

Background

The four human glycoprotein hormones chorionic gonadotropin (CG), luteinizing hormone (LH), follicle stimulating hormone (FSH), and thyroid stimulating hormone (TSH) are dimers consisting of alpha and beta subunits that are associated noncovalently. The alpha subunits of these hormones are identical, however, their beta chains are unique and confer biological specificity. Thyroid stimulating hormone functions in the control of thyroid structure and metabolism. The protein encoded by this gene is the beta subunit of thyroid stimulating hormone. Mutations in this gene are associated with congenital central and secondary hypothyroidism and Hashimoto's thyroiditis. Alternative splicing of this gene results in multiple transcript variants. [provided by RefSeq, May 2013],

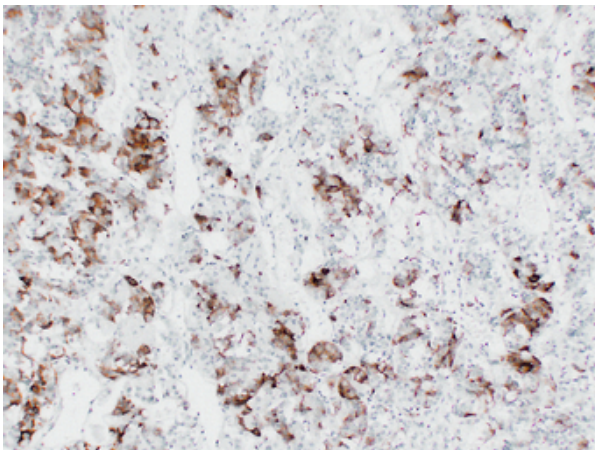
matters needing attention

Avoid repeated freezing and thawing!

Usage suggestions

This product can be used in immunological reaction related experiments. For more information, please consult technical personnel.

Products Images



Human pituitary adenoma tissue was stained with Anti-TSH (ABT-TSH) Antibody