



Parathyroid Hormone (PTH) (ABT-PTH) mouse mAb

Catalog No	BYab-15322
Isotype	IgG
Reactivity	Human; Predict react with Mouse, Rat
Applications	IHC;IF
Gene Name	PTH
Protein Name	Parathyroid hormone (PTH) (Parathormone) (Parathyrin)
Immunogen	Synthesized peptide derived from human Parathyroid Hormone (PTH)
Specificity	This antibody detects endogenous levels of human Parathyroid Hormone (PTH). Heat-induced epitope retrieval (HIER) TRIS-EDTA of pH8.0 was highly recommended as antigen repair method in paraffin section
Formulation	Liquid in PBS containing 50% glycerol, 0.5% BSA and 0.02% sodium azide.
Source	Mouse, Monoclonal/IgG1, Kappa
Purification	The antibody was affinity-purified from mouse ascites by affinity-chromatography using specific immunogen.
Dilution	IHC-p 1:100-500. IF 1:50-200
Concentration	1 mg/ml
Purity	≥90%
Storage Stability	-20°C/1 year
Synonyms	
Observed Band	
Cell Pathway	Secreted.
Tissue Specificity	
Function	disease:Defects in PTH are a cause of familial isolated hypoparathyroidism (FIH) [MIM:146200]. FIH exist both as autosomal dominant and recessive forms of hypoparathyroidism.,function:PTH elevates calcium level by dissolving the salts in bone and preventing their renal excretion.,online information:Parathyroid hormone entry,similarity:Belongs to the parathyroid hormone family.,
Background	This gene encodes a member of the parathyroid family of proteins. The encoded preproprotein is proteolytically processed to generate a protein that binds to the parathyroid hormone/parathyroid hormone-related peptide receptor and regulates blood calcium and phosphate levels. Excess production of the encoded protein, known as hyperparathyroidism, can result in hypercalcemia and kidney stones.

Nanjing BYabscience technology Co.,Ltd



On the other hand, defective processing of the encoded protein may lead to hypoparathyroidism, which can result in hypocalcemia and numbness. Alternative splicing results in multiple transcript variants. [provided by RefSeq, Oct 2015],

matters needing attention

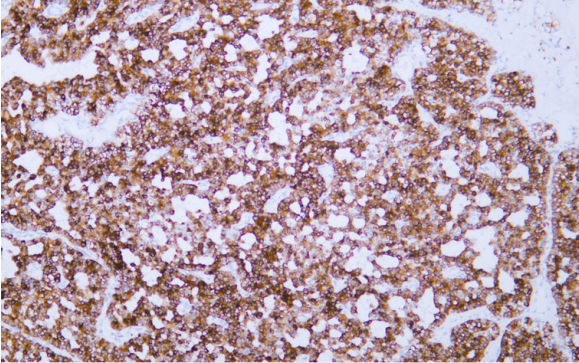
Avoid repeated freezing and thawing!

Usage suggestions

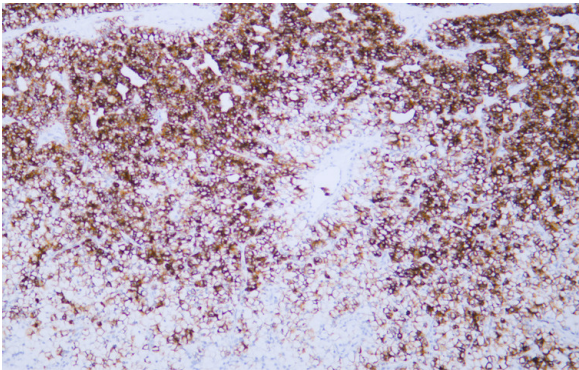
This product can be used in immunological reaction related experiments. For more information, please consult technical personnel.



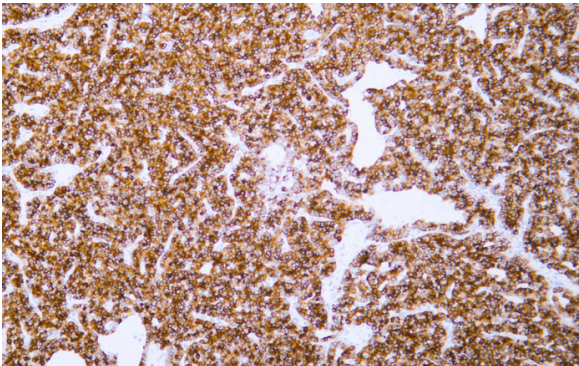
Products Images



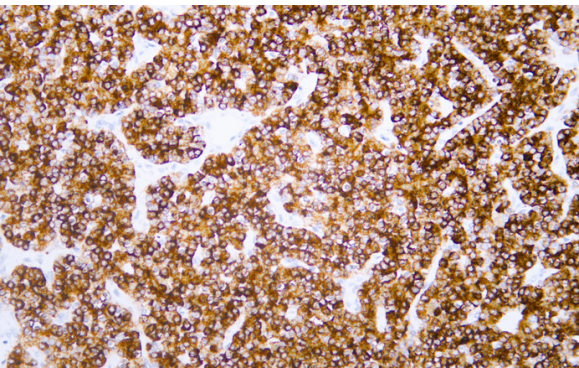
Human parathyroidoma tissue was stained with Anti-Parathyroid Hormone (ABT-PTH) Antibody



Human parathyroidoma tissue was stained with Anti-Parathyroid Hormone (ABT-PTH) Antibody



Human parathyroidoma tissue was stained with Anti-Parathyroid Hormone (ABT-PTH) Antibody



Human parathyroidoma tissue was stained with Anti-Parathyroid Hormone (ABT-PTH) Antibody