



CD35 (ABT-CD35) mouse mAb

Catalog No	BYab-15310
Isotype	IgG
Reactivity	Human
Applications	IHC;WB;IF
Gene Name	CR1 C3BR
Protein Name	Complement receptor type 1 (C3b/C4b receptor) (CD antigen CD35)
Immunogen	Synthesized peptide derived from human CD35
Specificity	This antibody detects endogenous levels of human CD35. Heat-induced epitope retrieval (HIER) Citrate buffer of pH6.0 was highly recommended as antigen repair method in paraffin section
Formulation	Liquid in PBS containing 50% glycerol, 0.5% BSA and 0.02% sodium azide.
Source	Mouse, Monoclonal/IgG1, Kappa
Purification	The antibody was affinity-purified from mouse ascites by affinity-chromatography using specific immunogen.
Dilution	IHC-p 1:100-500, WB 1:200-1000. IF 1:50-200
Concentration	1 mg/ml
Purity	≥90%
Storage Stability	-20°C/1 year
Synonyms	
Observed Band	
Cell Pathway	Membrane ; Single-pass type I membrane protein.
Tissue Specificity	Present on erythrocytes, a subset of T cells, mature B cells, follicular dendritic cells, monocytes and granulocytes.
Function	function:Mediates cellular binding of particles and immune complexes that have activated complement.,miscellaneous:This is the sequence of the F allotype of CR1.,online information:Blood group antigen gene mutation database,polymorphism:CR1 contains a system of antigens called the Knops blood group system. Polymorphisms within this system are involved in malarial rosetting, a process associated with cerebral malaria, the major cause of mortality in Plasmodium falciparum malaria. Common Knops system antigens include McCoy (McC) and SI(a)/Vil (Kn4, or Swain-Langley; Vil or Villien). SI(a-) phenotype is more common in persons of African descent and may protect against fatal malaria.,similarity:Belongs to the receptors of complement activation

Nanjing BYabscience technology Co.,Ltd



(RCA) family.,similarity:Contains 30 Sushi (CCP/SCR) domains.,subunit:Monomer.,tissue specificity:Present on erythrocytes, leukocytes, glomerular podocytes

Background

This gene is a member of the receptors of complement activation (RCA) family and is located in the 'cluster RCA' region of chromosome 1. The gene encodes a monomeric single-pass type I membrane glycoprotein found on erythrocytes, leukocytes, glomerular podocytes, and splenic follicular dendritic cells. The Knops blood group system is a system of antigens located on this protein. The protein mediates cellular binding to particles and immune complexes that have activated complement. Decreases in expression of this protein and/or mutations in its gene have been associated with gallbladder carcinomas, mesangiocapillary glomerulonephritis, systemic lupus erythematosus and sarcoidosis. Mutations in this gene have also been associated with a reduction in Plasmodium falciparum rosetting, conferring protection against severe malaria. Alternate allele-specific splice variants

matters needing attention

Avoid repeated freezing and thawing!

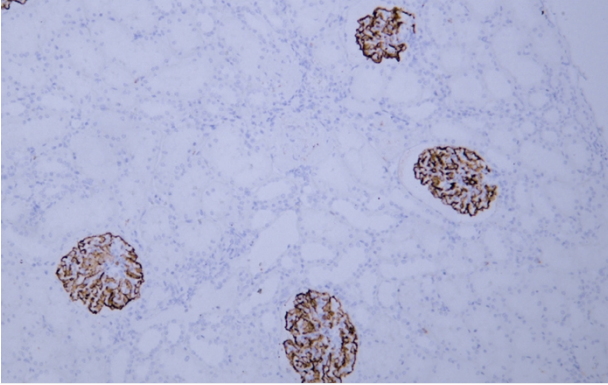
Usage suggestions

This product can be used in immunological reaction related experiments. For more information, please consult technical personnel.

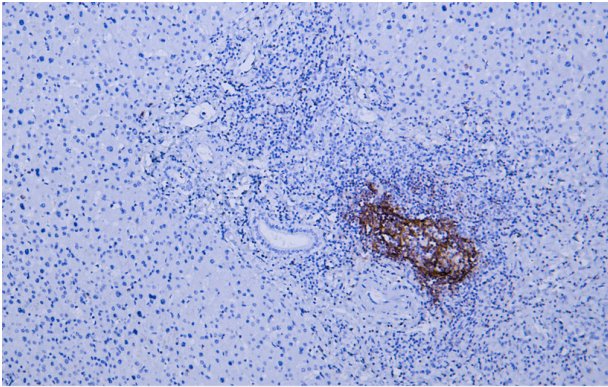
Nanjing BYabscience technology Co.,Ltd



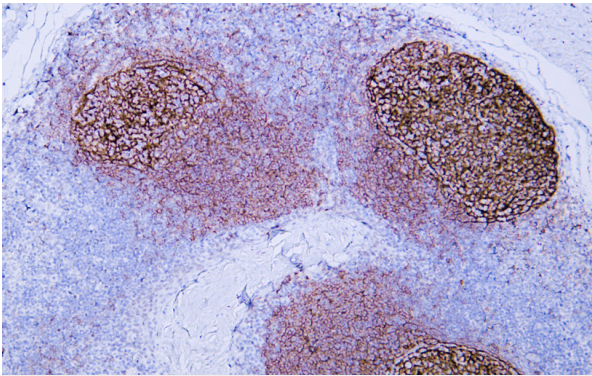
Products Images



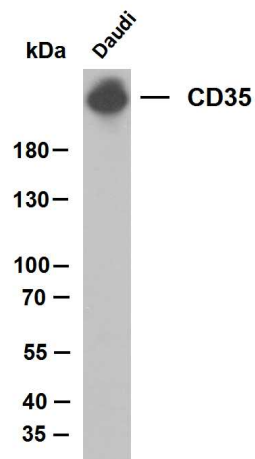
Human kidney tissue was stained with Anti-CD35 (ABT-CD35) Antibody



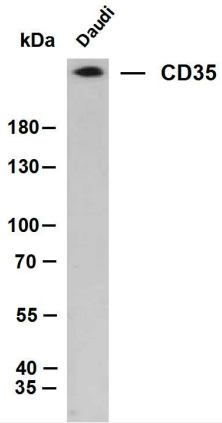
Human liver tissue was stained with Anti-CD35 (ABT-CD35) Antibody



Human tonsil tissue was stained with Anti-CD35 (ABT-CD35) Antibody



Whole cell lysates were separated by 10% SDS-PAGE, and the membrane was blotted with anti-CD35(ABT-CD35) antibody. The HRP-conjugated Goat anti-Mouse IgG(H + L) antibody was used to detect the antibody. Lane 1: Daudi Predicted band size: 180kDa Observed band size: 250kDa



Whole cell lysates were separated by 10% SDS-PAGE, and the membrane was blotted with anti-CD35(ABT-CD35) antibody. The HRP-conjugated Goat anti-Mouse IgG(H + L) antibody was used to detect the antibody. Lane 1: Daudi Predicted band size: 180kDa Observed band size: 250kDa