



PD-1 (ABT-PD1) mouse mAb

Catalog No	BYab-15290
Isotype	IgG
Reactivity	Human
Applications	IHC;WB;IF
Gene Name	PDCD1 PD1
Protein Name	Programmed cell death protein 1 (Protein PD-1) (hPD-1) (CD antigen CD279)
Immunogen	Synthesized peptide derived from human PD-1
Specificity	This antibody detects endogenous levels of human PD-1. Heat-induced epitope retrieval (HIER) Citrate buffer of pH6.0 was highly recommended as antigen repair method in paraffin section
Formulation	Liquid in PBS containing 50% glycerol, 0.5% BSA and 0.02% sodium azide.
Source	Mouse, Monoclonal/IgG1, Kappa
Purification	The antibody was affinity-purified from mouse ascites by affinity-chromatography using specific immunogen.
Dilution	IHC-p 1:100-500, WB 1:200-1000;IF/ICC 1:100-500
Concentration	1 mg/ml
Purity	≥90%
Storage Stability	-20°C/1 year
Synonyms	
Observed Band	
Cell Pathway	Cell membrane ; Single-pass type I membrane protein.
Tissue Specificity	Placenta,Pooled tissue,Uterine cervix,
Function	developmental stage:Induced at programmed cell death.,disease:Genetic variation in PDCD1 is associated with susceptibility to systemic lupus erythematosus type 2 (SLEB2) [MIM:605218]. Systemic lupus erythematosus is a chronic, inflammatory and often febrile multisystemic disorder of connective tissue. It affects principally the skin, joints, kidneys and serosal membranes. It is thought to represent a failure of the regulatory mechanisms of the autoimmune system.,function:Possible cell death inducer, in association with other factors.,similarity:Contains 1 Ig-like V-type (immunoglobulin-like) domain.,subunit:Monomer.,

Nanjing BYabscience technology Co.,Ltd



Background

This gene encodes a cell surface membrane protein of the immunoglobulin superfamily. This protein is expressed in pro-B-cells and is thought to play a role in their differentiation. In mice, expression of this gene is induced in the thymus when anti-CD3 antibodies are injected and large numbers of thymocytes undergo apoptosis. Mice deficient for this gene bred on a BALB/c background developed dilated cardiomyopathy and died from congestive heart failure. These studies suggest that this gene product may also be important in T cell function and contribute to the prevention of autoimmune diseases. [provided by RefSeq, Jul 2008],

matters needing attention

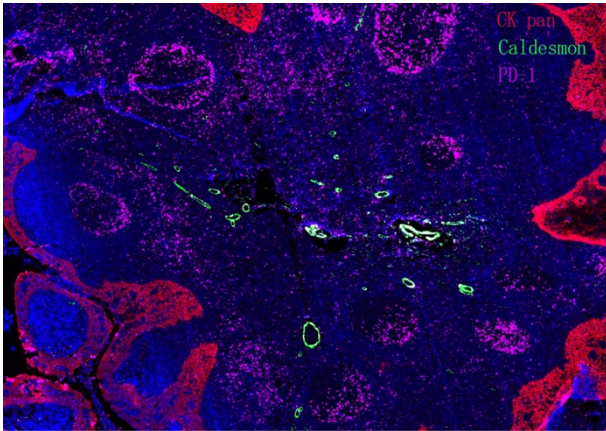
Avoid repeated freezing and thawing!

Usage suggestions

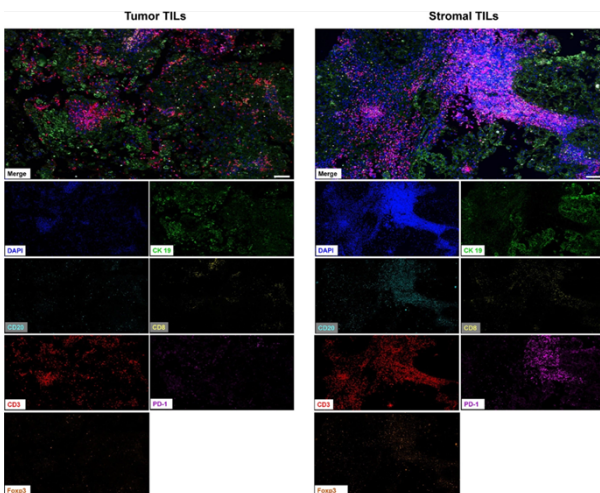
This product can be used in immunological reaction related experiments. For more information, please consult technical personnel.



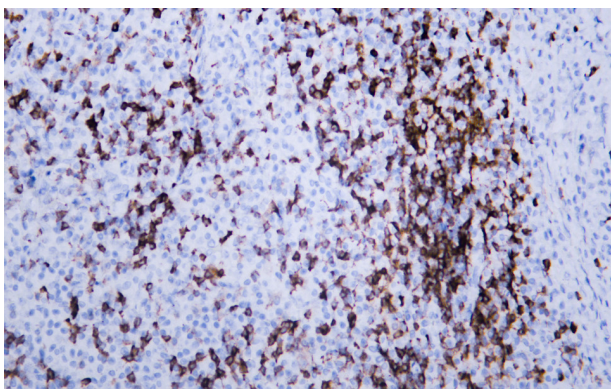
Products Images



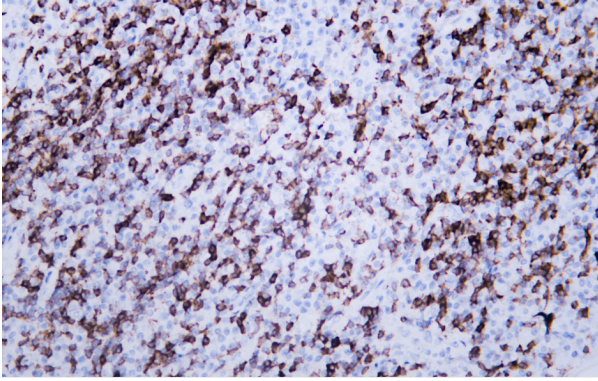
Fluorescence multiplex immunohistochemical analysis of normal human appendix tissue (formalin-fixed paraffin-embedded section). The section was incubated in 3 rounds of staining; in the order of CK PAN .(Catalog no:YM6815 1/200 dilution), PD-1.(Catalog no: YM6208 1/200 dilution), Caldesmon pan. (Catalog no:YM6826 1/200 dilution),each using a separate fluorescent tyramide signal amplification system : Treble-Fluorescence immunohistochemical mouse/rabbit kit Catalog NO: RS0035 (pH9.0)



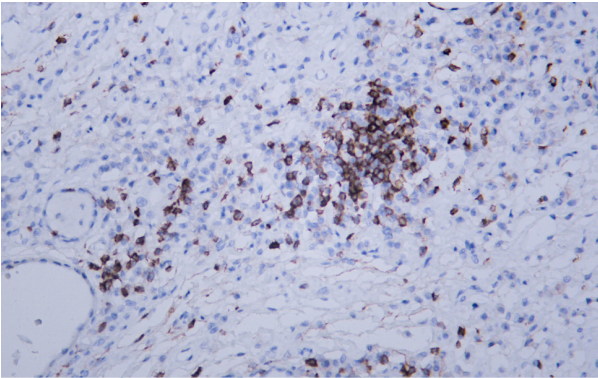
Zou, Ming-Xiang, et al. "A four-factor immune risk score signature predicts the clinical outcome of patients with spinal chordoma." *Clinical and translational medicine* 10.1 (2020): 224-237.



Human lymphoma tissue was stained with Anti-PD-1 (ABT-PD1) Antibody



Human lymphoma tissue was stained with Anti-PD-1 (ABT-PD1) Antibody



Human lymphoma tissue was stained with Anti-PD-1 (ABT-PD1) Antibody