



Synaptophysin (ABT533) Mouse mAb

| | |
|---------------------------|---|
| Catalog No | BYab-15211 |
| Isotype | IgG |
| Reactivity | Human;Mouse;Rat |
| Applications | IHC;WB; |
| Gene Name | SYP |
| Protein Name | Major synaptic vesicle protein p38;MRX96;MRXSYP;Syn p38;Synaptophysin;Syp;SYPH;SYPH_HUMAN;Syp1 |
| Immunogen | Synthesized peptide derived from human Synaptophysin |
| Specificity | The antibody can specifically recognize human Synaptophysin protein. |
| Formulation | PBS, pH7.2, 0.03% Porcolin 300, containing stabilizing protein |
| Source | Mouse, Monoclonal/IgG1, Kappa |
| Purification | The antibody was affinity-purified from mouse ascites by affinity-chromatography using specific immunogen. |
| Dilution | IHC-p 1:200-400, WB 1:200-1000, |
| Concentration | 1 mg/ml |
| Purity | ≥90% |
| Storage Stability | -20°C/1 year |
| Synonyms | Major synaptic vesicle protein p38;MRX96;MRXSYP;Syn p38;Synaptophysin;Syp;SYPH;SYPH_HUMAN;Syp1 |
| Observed Band | |
| Cell Pathway | Cytoplasmic |
| Tissue Specificity | Pancreas/ Colon |
| Function | domain:The calcium-binding activity is thought to be localized in the cytoplasmic tail of the protein.,function:Possibly involved in structural functions as organizing other membrane components or in targeting the vesicles to the plasma membrane.,online information:Synaptophysin entry,PTM:Ubiquitinated; mediated by SIAH1 or SIAH2 and leading to its subsequent proteasomal degradation.,similarity:Belongs to the synaptophysin/synaptobrevin family.,similarity:Contains 1 MARVEL domain.,subunit:Homohexamer or homotetramer.,tissue specificity:Characteristic of a type of small (30-80 nm) neurosecretory vesicles, including presynaptic vesicles, but also vesicles of various neuroendocrine cells of both neuronal and epithelial phenotype., |

Nanjing BYabscience technology Co.,Ltd



Background

This gene encodes an integral membrane protein of small synaptic vesicles in brain and endocrine cells. The protein also binds cholesterol and is thought to direct targeting of vesicle-associated membrane protein 2 (synaptobrevin) to intracellular compartments. Mutations in this gene are associated with X-linked mental retardation (XLMR). [provided by RefSeq, Aug 2011],

matters needing attention

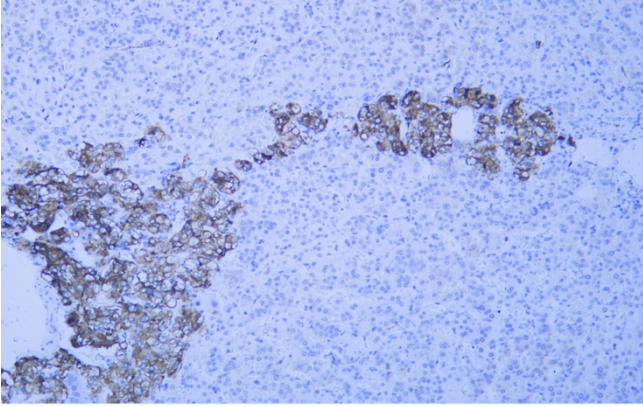
Avoid repeated freezing and thawing!

Usage suggestions

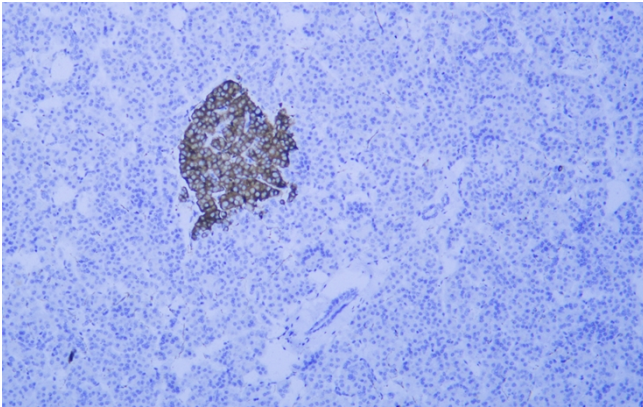
This product can be used in immunological reaction related experiments. For more information, please consult technical personnel.



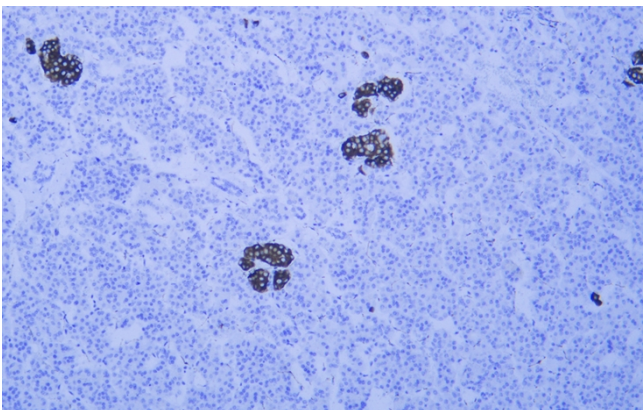
Products Images



Human adrenal gland tissue was stained with Anti-Synaptophysin (ABT533) Antibody



Human pancreas tissue was stained with Anti-Synaptophysin (ABT533) Antibody



Human pancreas tissue was stained with Anti-Synaptophysin (ABT533) Antibody