



CD23 (ABT-CD23) mouse mAb

Catalog No	BYab-15120
Isotype	IgG
Reactivity	Human
Applications	IHC;IF
Gene Name	FCER2 CD23A CLEC4J FCE2 IGEBF
Protein Name	Low affinity immunoglobulin epsilon Fc receptor (BLAST-2) (C-type lectin domain family 4 member J) (Fc-epsilon-R1I) (Immunoglobulin E-binding factor) (Lymphocyte IgE receptor) (CD antigen CD23) [Cleav
Immunogen	Synthesized peptide derived from human CD23
Specificity	This antibody detects endogenous levels of human CD23. Heat-induced epitope retrieval (HIER) Citrate buffer of pH6.0 was highly recommended as antigen repair method in paraffin section
Formulation	Liquid in PBS containing 50% glycerol, 0.5% BSA and 0.02% sodium azide.
Source	Mouse, Monoclonal/IgG1, Kappa
Purification	The antibody was affinity-purified from mouse ascites by affinity-chromatography using specific immunogen.
Dilution	IHC-p 1:100-500. IF 1:50-200
Concentration	1 mg/ml
Purity	≥90%
Storage Stability	-20°C/1 year
Synonyms	
Observed Band	
Cell Pathway	Cell membrane; Single-pass type II membrane protein. Cell membrane; Lipid-anchor. Secreted. Also exists as a soluble excreted form, sCD23.
Tissue Specificity	B-cell,Blood,
Function	function:This receptor has essential roles in the regulation of IgE production and in the differentiation of B-cells (it is a B-cell-specific antigen).,miscellaneous:There are two kinds of Fc receptors for IgE, which differ in both structure and function: high affinity receptors on basophils and mast cells and low affinity receptors on lymphocytes and monocytes.,online information:CD23,PTM:N- and O-glycosylated.,similarity:Contains 1 C-type lectin domain.,subcellular location:Also exists as a soluble excreted form.,

Nanjing BYabscience technology Co.,Ltd



Background

The protein encoded by this gene is a B-cell specific antigen, and a low-affinity receptor for IgE. It has essential roles in B cell growth and differentiation, and the regulation of IgE production. This protein also exists as a soluble secreted form, then functioning as a potent mitogenic growth factor. Alternatively spliced transcript variants encoding different isoforms have been described for this gene.[provided by RefSeq, Jul 2011],

matters needing attention

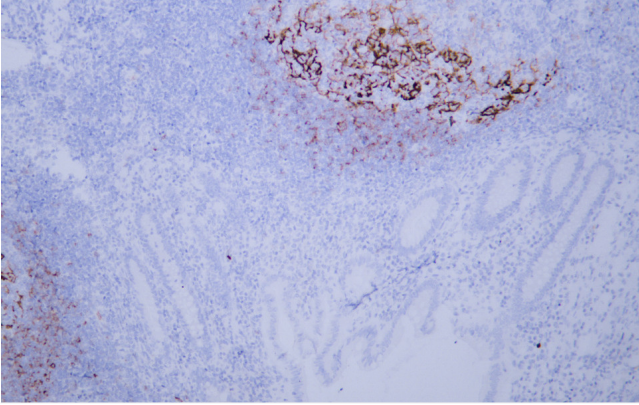
Avoid repeated freezing and thawing!

Usage suggestions

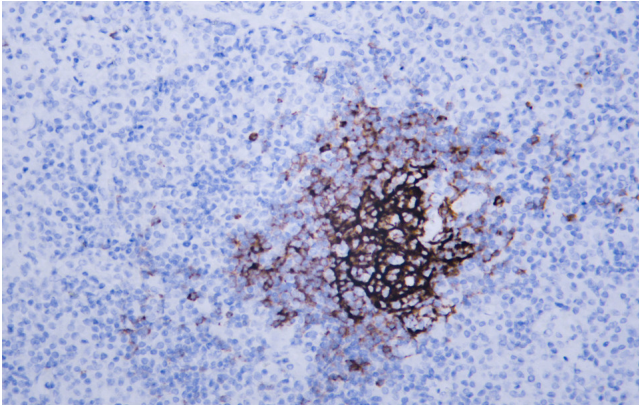
This product can be used in immunological reaction related experiments. For more information, please consult technical personnel.



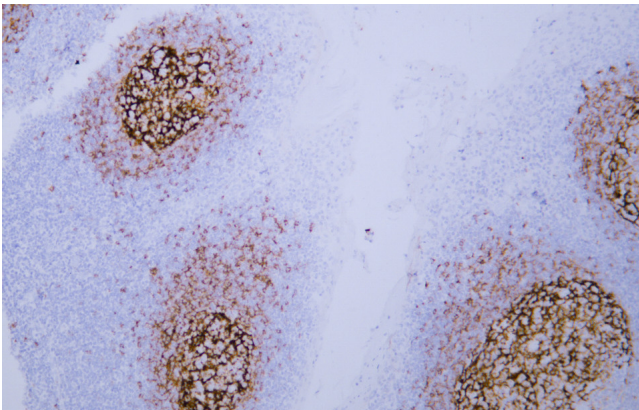
Products Images



Human appendix tissue was stained with anti-CD23(ABT-CD23) antibody.



Human diffuse large B-cell lymphoma tissue was stained with Anti-CD23 (ABT-CD23) Antibody



Human tonsil tissue was stained with anti-CD23(ABT-CD23) antibody.