



# Claudin 7 (ABT443) Mouse mAb

<b>Catalog No</b>	BYab-15093
<b>Isotype</b>	IgG
<b>Reactivity</b>	Human; Predict react with Mouse, Rat
<b>Applications</b>	IHC, WB
<b>Gene Name</b>	CLDN7 CEPTRL2 CPETRL2
<b>Protein Name</b>	CEPTR L2;CEPTRL 2;CEPTRL2;Claudin 1;Claudin 7;Claudin 9;Claudin-7;Claudin1;Claudin7;Claudin9;CLD7_HUMAN;CLDN 7;CLDN-7;CLDN7;Clostridium perfringens enterotoxin receptor like 2;CPETR L2;CPETRL 2;CPETRL
<b>Immunogen</b>	Synthesized peptide derived from human Claudin 7
<b>Specificity</b>	The antibody can specifically recognize human Claudin 7 protein. In western blotting of LnCap cell lysate, the antibody can label a 22 kDa band corresponding to Claudin 7.
<b>Formulation</b>	PBS, pH7.2, 0.03% Porcolin 300, containing stabilizing protein
<b>Source</b>	Monoclonal Mouse IgG2b, Kappa
<b>Purification</b>	The antibody was affinity-purified from mouse ascites by affinity-chromatography using specific immunogen.
<b>Dilution</b>	IHC-p 1:200-400, WB: 500-1000
<b>Concentration</b>	1 mg/ml
<b>Purity</b>	≥90%
<b>Storage Stability</b>	-20°C/1 year
<b>Synonyms</b>	CEPTR L2;CEPTRL 2;CEPTRL2;Claudin 1;Claudin 7;Claudin 9;Claudin-7;Claudin1;Claudin7;Claudin9;CLD7_HUMAN;CLDN 7;CLDN-7;CLDN7;Clostridium perfringens enterotoxin receptor like 2;CPETR L2;CPETRL 2;CPETRL2;Hs.84359
<b>Observed Band</b>	
<b>Cell Pathway</b>	Membranous
<b>Tissue Specificity</b>	kindey
<b>Function</b>	function:Plays a major role in tight junction-specific obliteration of the intercellular space.,induction:By androgens.,similarity:Belongs to the claudin family.,subunit:Directly interacts with TJP1/ZO-1, TJP2/ZO-2 and TJP3/ZO-3.,tissue specificity:Expressed in kidney, lung and prostate. Isoform 1 seems to be predominant, except in some normal prostate samples, where

Nanjing BYabscience technology Co.,Ltd



isoform 2 is the major form. Down-regulated in breast cancers, including ductal carcinoma in situ (DCIS), lobular carcinoma in situ (LCIS) and invasive ductal carcinoma (IDC) (at protein level), as well as in several cancer cell lines. Loss of expression correlates with histological grade, occurring predominantly in high-grade lesions.,

#### Background

This gene encodes a member of the claudin family. Claudins are integral membrane proteins and components of tight junction strands. Tight junction strands serve as a physical barrier to prevent solutes and water from passing freely through the paracellular space between epithelial or endothelial cell sheets, and also play critical roles in maintaining cell polarity and signal transductions. Differential expression of this gene has been observed in different types of malignancies, including breast cancer, ovarian cancer, hepatocellular carcinomas, urinary tumors, prostate cancer, lung cancer, head and neck cancers, thyroid carcinomas, etc.. Alternatively spliced transcript variants encoding different isoforms have been found.[provided by RefSeq, May 2010],

#### matters needing attention

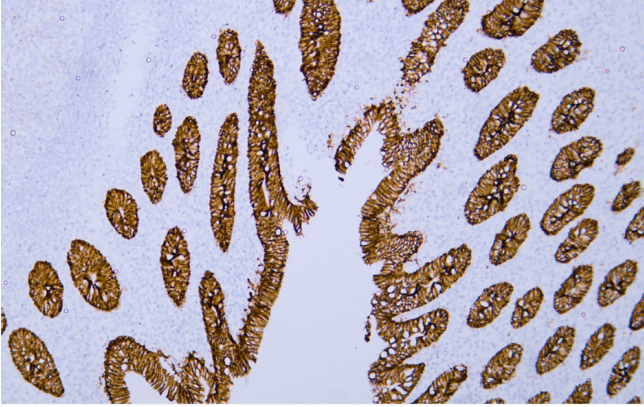
Avoid repeated freezing and thawing!

#### Usage suggestions

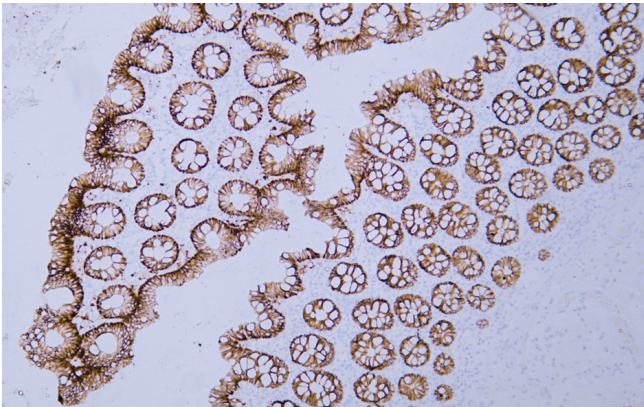
This product can be used in immunological reaction related experiments. For more information, please consult technical personnel.



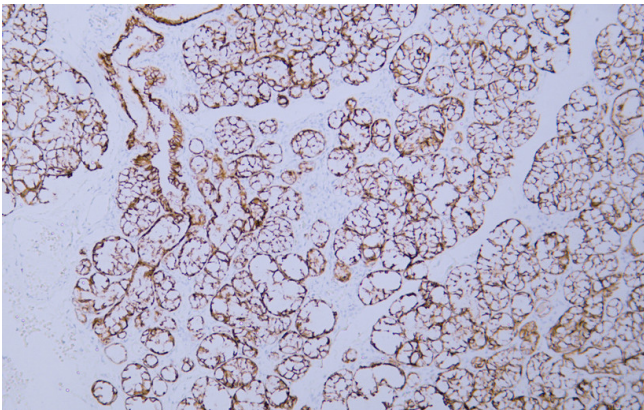
## Products Images



Human appendix tissue was stained with Anti-Claudin 7 (ABT443) Antibody



Human colon tissue was stained with Anti-Claudin 7 (ABT443) Antibody



Human salivary gland tissue was stained with Anti-Claudin 7 (ABT443) Antibody