



S100A1 mouse mAb(PT1428)

Catalog No	BYab-15082
Isotype	IgG
Reactivity	Human;Mouse;Rat
Applications	IHC;IF
Gene Name	S100A1 S100A
Protein Name	S100A1
Immunogen	Synthesized peptide derived from human S100A1
Specificity	This antibody detects endogenous levels of S100A1 at Human
Formulation	Liquid in PBS containing 50% glycerol, 0.5% BSA and 0.123% sodium azide.
Source	Mouse, Monoclonal
Purification	The antibody was affinity-purified from mouse ascites by affinity-chromatography using specific immunogen.
Dilution	IHC-p 1:100-500, IF 1:100-500
Concentration	1 mg/ml
Purity	≥90%
Storage Stability	-20°C/1 year
Synonyms	Protein S100-A1 (S-100 protein alpha chain;S-100 protein subunit alpha;S100 calcium-binding protein A1)
Observed Band	
Cell Pathway	Cytoplasm . Sarcoplasmic reticulum . Mitochondrion .
Tissue Specificity	Highly prevalent in heart (PubMed:12804600, PubMed:1384693). Also found in lesser quantities in skeletal muscle and brain (PubMed:1384693).
Function	function:Weakly binds calcium but binds zinc very tightly-distinct binding sites with different affinities exist for both ions on each monomer. Physiological concentrations of potassium ion antagonize the binding of both divalent cations, especially affecting high-affinity calcium-binding sites.,similarity:Belongs to the S-100 family.,similarity:Contains 2 EF-hand domains.,subunit:Dimer of either two alpha chains, or two beta chains, or one alpha and one beta chain.,tissue specificity:Highly prevalent in heart. Also found in lesser quantities in skeletal muscle and brain.,
Background	S100 calcium binding protein A1(S100A1) Homo sapiens The protein encoded by this gene is a member of the S100 family of proteins containing 2

Nanjing BYabscience technology Co.,Ltd



EF-hand calcium-binding motifs. S100 proteins are localized in the cytoplasm and/or nucleus of a wide range of cells, and involved in the regulation of a number of cellular processes such as cell cycle progression and differentiation. S100 genes include at least 13 members which are located as a cluster on chromosome 1q21. This protein may function in stimulation of Ca²⁺-induced Ca²⁺ release, inhibition of microtubule assembly, and inhibition of protein kinase C-mediated phosphorylation. Reduced expression of this protein has been implicated in cardiomyopathies. [provided by RefSeq, Jul 2008],

matters needing attention

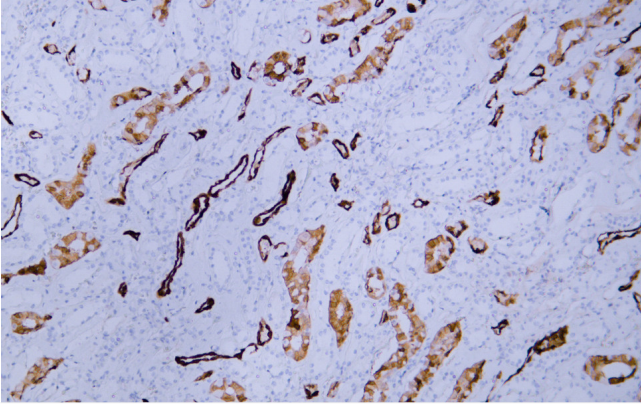
Avoid repeated freezing and thawing!

Usage suggestions

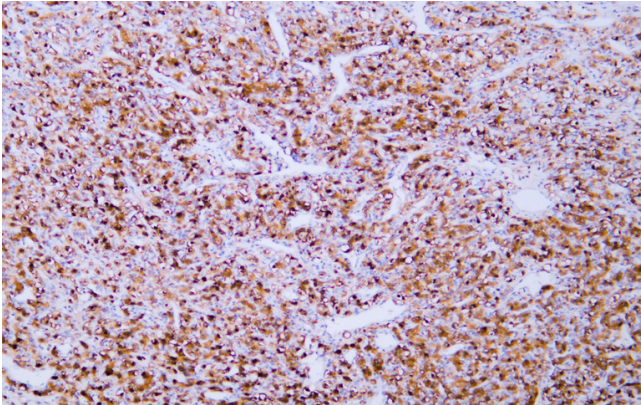
This product can be used in immunological reaction related experiments. For more information, please consult technical personnel.



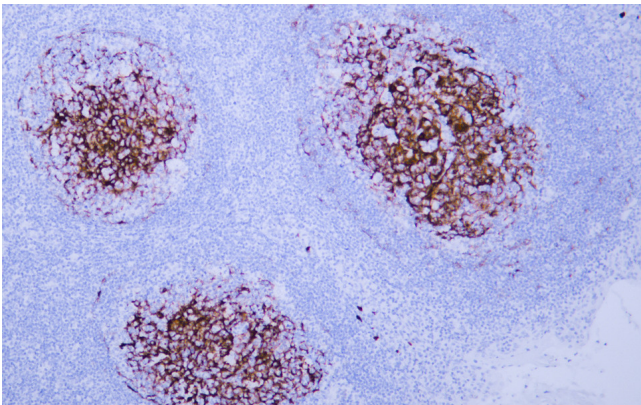
Products Images



Human kidney tissue was stained with Anti-S100A1 (ABT226) Antibody



Human renal clear cell carcinoma tissue was stained with Anti-S100A1 (ABT226) Antibody



Human tonsil tissue was stained with Anti-S100A1 (ABT226) Antibody