



PERM (light chain, Cleaved-Gly278) rabbit pAb

Catalog No	BYab-15065
Isotype	IgG
Reactivity	Human;Rat;Mouse;
Applications	WB;IHC
Gene Name	MPO
Protein Name	PERM (light chain, Cleaved-Gly278)
Immunogen	Synthesized peptide derived from human PERM (light chain, Cleaved-Gly278)
Specificity	This antibody detects endogenous levels of Human PERM (light chain, Cleaved-Gly278, protein was cleaved amino acid sequence between 278-279)
Formulation	Liquid in PBS containing 50% glycerol, 0.5% BSA and 0.02% sodium azide.
Source	Polyclonal, Rabbit,IgG
Purification	The antibody was affinity-purified from rabbit serum by affinity-chromatography using specific immunogen.
Dilution	WB 1:500-2000;IHC-p 1:50-300
Concentration	1 mg/ml
Purity	≥90%
Storage Stability	-20°C/1 year
Synonyms	Myeloperoxidase (MPO;EC 1.11.2.2) [Cleaved into: Myeloperoxidase; 89 kDa myeloperoxidase; 84 kDa myeloperoxidase; Myeloperoxidase light chain; Myeloperoxidase heavy chain]
Observed Band	12 84 89kD
Cell Pathway	Lysosome.
Tissue Specificity	
Function	catalytic activity:Cl(-) + H(2)O(2) = HOCl + 2 H(2)O.,catalytic activity:Donor + H(2)O(2) = oxidized donor + 2 H(2)O.,cofactor:Binds 1 calcium ion per heterodimer.,cofactor:Binds 1 heme B (iron-protoporphyrin IX) group covalently per heterodimer.,disease:Defects in MPO are the cause of myeloperoxidase deficiency (MPD) [MIM:254600]. MPD is an autosomal recessive defect that results in disseminated candidiasis.,function:Part of the host defense system of polymorphonuclear leukocytes. It is responsible for microbicidal activity against a wide range of organisms. In the stimulated PMN, MPO catalyzes the production of hypohalous acids, primarily hypochlorous acid in physiologic situations, and other

Nanjing BYabscience technology Co.,Ltd



toxic intermediates that greatly enhance PMN microbicidal activity.,online information:MPO mutation db,online information:Myeloperoxidase entry,similarity:Belongs to the peroxidase family. XPO sub

Background

Myeloperoxidase (MPO) is a heme protein synthesized during myeloid differentiation that constitutes the major component of neutrophil azurophilic granules. Produced as a single chain precursor, myeloperoxidase is subsequently cleaved into a light and heavy chain. The mature myeloperoxidase is a tetramer composed of 2 light chains and 2 heavy chains. This enzyme produces hypohalous acids central to the microbicidal activity of neutrophils. [provided by RefSeq, Nov 2014],

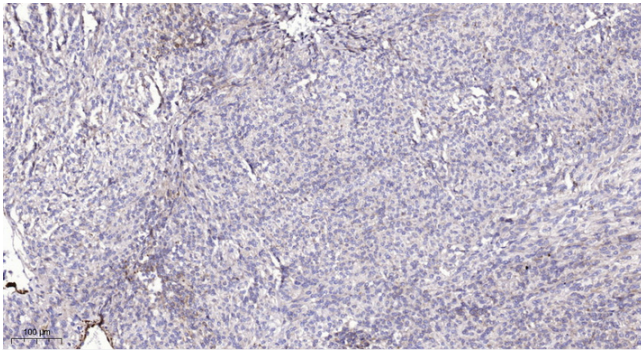
matters needing attention

Avoid repeated freezing and thawing!

Usage suggestions

This product can be used in immunological reaction related experiments. For more information, please consult technical personnel.

Products Images



Immunohistochemical analysis of paraffin-embedded human Colon cancer. 1, Antibody was diluted at 1:200(4° overnight). 2, Tris-EDTA,pH9.0 was used for antigen retrieval. 3,Secondary antibody was diluted at 1:200(room temperature, 45min).