



# SLUG rabbit pAb

<b>Catalog No</b>	BYab-15059
<b>Isotype</b>	IgG
<b>Reactivity</b>	Human;Mouse;Rat
<b>Applications</b>	WB;ELISA;IHC
<b>Gene Name</b>	SNAI2 SLUG SLUGH
<b>Protein Name</b>	SLUG
<b>Immunogen</b>	Synthesized peptide derived from human SLUG AA range: 152-202
<b>Specificity</b>	This antibody detects endogenous levels of Human,Mouse,Rat SLUG
<b>Formulation</b>	Liquid in PBS containing 50% glycerol, 0.5% BSA and 0.02% sodium azide.
<b>Source</b>	Polyclonal, Rabbit,IgG
<b>Purification</b>	The antibody was affinity-purified from rabbit serum by affinity-chromatography using specific immunogen.
<b>Dilution</b>	WB 1:500-2000;IHC-p 1:50-300; ELISA 2000-20000
<b>Concentration</b>	1 mg/ml
<b>Purity</b>	≥90%
<b>Storage Stability</b>	-20°C/1 year
<b>Synonyms</b>	Zinc finger protein SNAI2 (Neural crest transcription factor Slug;Protein snail homolog 2)
<b>Observed Band</b>	
<b>Cell Pathway</b>	Nucleus . Cytoplasm. Observed in discrete foci in interphase nuclei. These nuclear foci do not overlap with the nucleoli, the SP100 and the HP1 heterochromatin or the coiled body, suggesting SNAI2 is associated with active transcription or active splicing regions.
<b>Tissue Specificity</b>	Expressed in most adult human tissues, including spleen, thymus, prostate, testis, ovary, small intestine, colon, heart, brain, placenta, lung, liver, skeletal muscle, kidney and pancreas. Not detected in peripheral blood leukocyte. Expressed in the dermis and in all layers of the epidermis, with high levels of expression in the basal layers (at protein level). Expressed in osteoblasts (at protein level). Expressed in mesenchymal stem cells (at protein level). Expressed in breast tumor cells (at protein level).
<b>Function</b>	disease:Defects in SNAI2 are a cause of neural tube defects (NTD).,disease:Defects in SNAI2 are the cause of Waardenburg syndrome type 2D (WS2D) [MIM:608890]. WS2 is a genetically heterogeneous, autosomal dominant disorder characterized by sensorineural deafness, pigmentary

**Nanjing BYabscience technology Co.,Ltd**



disturbances, and absence of dystopia canthorum. The frequency of deafness is higher in WS2 than in WS1.,function:Transcriptional repressor. Involved in the generation and migration of neural crest cells.,similarity:Belongs to the snail C2H2-type zinc-finger protein family.,similarity:Contains 5 C2H2-type zinc fingers.,tissue specificity:Expressed in placenta and adult heart, pancreas, liver, kidney and skeletal muscle.,

**Background**

snail family transcriptional repressor 2(SNAI2) Homo sapiens This gene encodes a member of the Snail family of C2H2-type zinc finger transcription factors. The encoded protein acts as a transcriptional repressor that binds to E-box motifs and is also likely to repress E-cadherin transcription in breast carcinoma. This protein is involved in epithelial-mesenchymal transitions and has antiapoptotic activity. Mutations in this gene may be associated with sporadic cases of neural tube defects. [provided by RefSeq, Jul 2008],

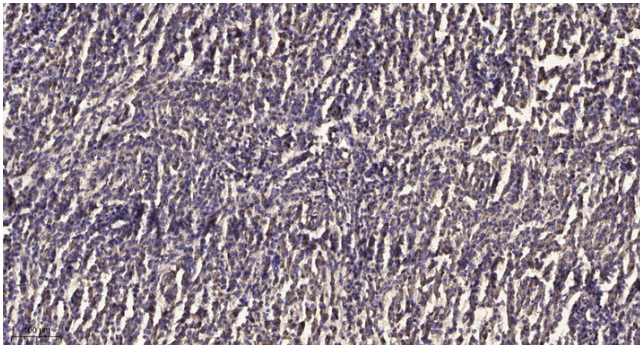
**matters needing attention**

Avoid repeated freezing and thawing!

**Usage suggestions**

This product can be used in immunological reaction related experiments. For more information, please consult technical personnel.

**Products Images**



Immunohistochemical analysis of paraffin-embedded human meningioma. 1, Antibody was diluted at 1:200(4 ° overnight). 2, Tris-EDTA,pH9.0 was used for antigen retrieval. 3,Secondary antibody was diluted at 1:200(room temperature, 45min).