



PP2B-A α rabbit pAb

Catalog No	BYab-15058
Isotype	IgG
Reactivity	Human;Mouse;Rat
Applications	WB;IHC
Gene Name	PPP3CA CALNA CNA
Protein Name	PP2B-A α
Immunogen	Synthesized peptide derived from human PP2B-A α
Specificity	This antibody detects endogenous levels of Human,Mouse,Rat PP2B-A α
Formulation	Liquid in PBS containing 50% glycerol, 0.5% BSA and 0.02% sodium azide.
Source	Polyclonal, Rabbit,IgG
Purification	The antibody was affinity-purified from rabbit serum by affinity-chromatography using specific immunogen.
Dilution	WB 1:500-2000;IHC-p 1:50-300
Concentration	1 mg/ml
Purity	≥90%
Storage Stability	-20°C/1 year
Synonyms	Serine/threonine-protein phosphatase 2B catalytic subunit alpha isoform (EC 3.1.3.16;CAM-PRP catalytic subunit;Calmodulin-dependent calcineurin A subunit alpha isoform)
Observed Band	
Cell Pathway	Cytoplasm . Cell membrane ; Peripheral membrane protein . Cell membrane, sarcolemma . Cytoplasm, myofibril, sarcomere, Z line . Cell projection, dendritic spine . Colocalizes with ACTN1 and MYOZ2 at the Z line in heart and skeletal muscle (By similarity). Recruited to the cell membrane by scaffold protein AKAP5 following L-type Ca(2+)-channel activation (PubMed:22343722). .
Tissue Specificity	Expressed in keratinocytes (at protein level) (PubMed:29043977). Expressed in lymphoblasts (at protein level) (PubMed:30254215).
Function	catalytic activity:A phosphoprotein + H(2)O = a protein + phosphate.,cofactor:Binds 1 Fe(3+) ion per subunit.,cofactor:Binds 1 zinc ion per subunit.,function:Calcium-dependent, calmodulin-stimulated protein phosphatase. This subunit may have a role in the calmodulin activation of calcineurin. Dephosphorylates HSPB1 and SSH1.,online information:Calcineurin entry,similarity:Belongs to the PPP phosphatase family.,similarity:Belongs to the

Nanjing BYabscience technology Co.,Ltd



PPP phosphatase family. PP-2B subfamily.,subcellular location:Colocalizes with ACTN1 and MYOZ2 at the Z line in heart and skeletal muscle.,subunit:Composed of two components (A and B), the A component is the catalytic subunit and the B component confers calcium sensitivity. Interacts with TORC2/CRTC2, MYOZ1, MYOZ2 and MYOZ3.,

Background

catalytic activity:A phosphoprotein + H(2)O = a protein + phosphate.,cofactor:Binds 1 Fe(3+) ion per subunit.,cofactor:Binds 1 zinc ion per subunit.,function:Calcium-dependent, calmodulin-stimulated protein phosphatase. This subunit may have a role in the calmodulin activation of calcineurin. Dephosphorylates HSPB1 and SSH1.,online information:Calcineurin entry,similarity:Belongs to the PPP phosphatase family.,similarity:Belongs to the PPP phosphatase family. PP-2B subfamily.,subcellular location:Colocalizes with ACTN1 and MYOZ2 at the Z line in heart and skeletal muscle.,subunit:Composed of two components (A and B), the A component is the catalytic subunit and the B component confers calcium sensitivity. Interacts with TORC2/CRTC2, MYOZ1, MYOZ2 and MYOZ3.,

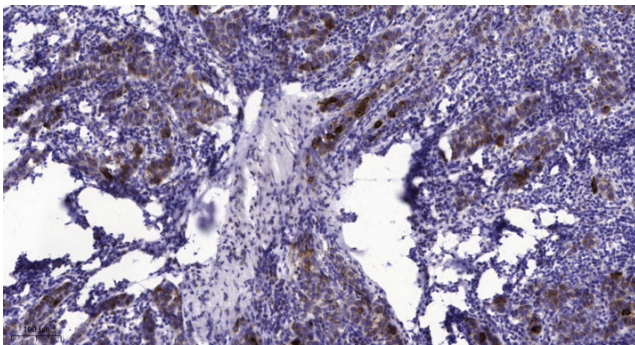
matters needing attention

Avoid repeated freezing and thawing!

Usage suggestions

This product can be used in immunological reaction related experiments. For more information, please consult technical personnel.

Products Images



Immunohistochemical analysis of paraffin-embedded human Breast cancer. 1, Antibody was diluted at 1:200(4° overnight). 2, Tris-EDTA,pH9.0 was used for antigen retrieval. 3,Secondary antibody was diluted at 1:200(room temperature, 45min).