



PLK2 Polyclonal Antibody

Catalog No	BYab-15053
Isotype	IgG
Reactivity	Human;Rat
Applications	IHC;IF;ELISA
Gene Name	PLK2 SNK
Protein Name	PLK2
Immunogen	Synthetic peptide from human protein at AA range: 377-451
Specificity	The antibody detects endogenous PLK2
Formulation	Liquid in PBS containing 50% glycerol, 0.5% BSA and 0.02% sodium azide.
Source	Polyclonal, Rabbit,IgG
Purification	The antibody was affinity-purified from rabbit antiserum by affinity-chromatography using epitope-specific immunogen.
Dilution	IHC-p 1:50-200, ELISA 1:10000-20000. IF 1:50-200
Concentration	1 mg/ml
Purity	≥90%
Storage Stability	-20°C/1 year
Synonyms	Serine/threonine-protein kinase PLK2 (EC 2.7.11.21;Polo-like kinase 2;PLK-2;hPlk2;Serine/threonine-protein kinase SNK;hSNK;Serum-inducible kinase)
Observed Band	
Cell Pathway	Cytoplasm, cytoskeleton, microtubule organizing center, centrosome, centriole . Cell projection, dendrite . Localizes to centrosomes during early G1 phase where it only associates to the mother centriole and then distributes equally to both mother and daughter centrioles at the onset of S phase.
Tissue Specificity	Expressed at higher level in the fetal lung, kidney, spleen and heart.
Function	catalytic activity:ATP + a protein = ADP + a phosphoprotein.,function:May play a role in the division of at least some cell types, such as fibroblasts, and could function in embryogenesis, wound healing or neoplasia.,similarity:Belongs to the protein kinase superfamily.,similarity:Belongs to the protein kinase superfamily. Ser/Thr protein kinase family. CDC5/Polo subfamily.,similarity:Contains 1 protein kinase domain.,similarity:Contains 2 POLO box domains.,

Nanjing BYabscience technology Co.,Ltd



Background

The protein encoded by this gene is a member of the polo family of serine/threonine protein kinases that have a role in normal cell division. This gene is most abundantly expressed in testis, spleen and fetal tissues, and its expression is inducible by serum, suggesting that it may also play an important role in cells undergoing rapid cell division. Alternatively spliced transcript variants encoding different isoforms have been found for this gene. [provided by RefSeq, Nov 2011],

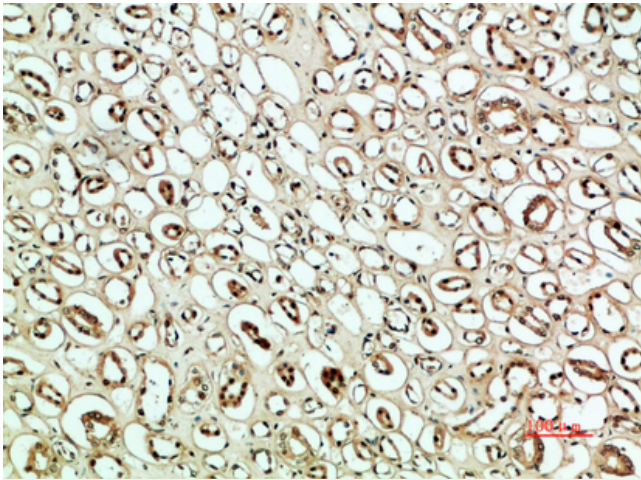
matters needing attention

Avoid repeated freezing and thawing!

Usage suggestions

This product can be used in immunological reaction related experiments. For more information, please consult technical personnel.

Products Images



Immunohistochemical analysis of paraffin-embedded human-kidney, antibody was diluted at 1:200