



PDP2 Polyclonal Antibody

Catalog No	BYab-15040
Isotype	IgG
Reactivity	Human;Rat;Mouse;
Applications	WB;ELISA;IHC
Gene Name	PDP2
Protein Name	[Pyruvate dehydrogenase [acetyl-transferring]]-phosphatase 2 mitochondrial
Immunogen	Synthesized peptide derived from PDP2 . at AA range: 70-150
Specificity	PDP2 Polyclonal Antibody detects endogenous levels of PDP2 protein.
Formulation	Liquid in PBS containing 50% glycerol, 0.5% BSA and 0.02% sodium azide.
Source	Polyclonal, Rabbit,IgG
Purification	The antibody was affinity-purified from rabbit antiserum by affinity-chromatography using epitope-specific immunogen.
Dilution	WB 1:500-2000;IHC-p 1:50-300; ELISA 2000-20000
Concentration	1 mg/ml
Purity	≥90%
Storage Stability	-20°C/1 year
Synonyms	PDP2; KIAA1348; [Pyruvate dehydrogenase [acetyl-transferring]]-phosphatase 2, mitochondrial; PDP 2; Pyruvate dehydrogenase phosphatase catalytic subunit 2; PDPC 2
Observed Band	59kD
Cell Pathway	Mitochondrion matrix .
Tissue Specificity	Brain,
Function	catalytic activity:[Pyruvate dehydrogenase (acetyl-transferring)] phosphate + H(2)O = [pyruvate dehydrogenase (acetyl-transferring)] + phosphate.,cofactor: Binds 2 magnesium ions per subunit.,function:Catalyzes the dephosphorylation and concomitant reactivation of the alpha subunit of the E1 component of the pyruvate dehydrogenase complex.,similarity:Belongs to the PP2C family.,subunit:Heterodimer of a catalytic subunit and a FAD protein of unknown function.,
Background	This gene is a mitochondrial protein that functions as a phosphatase and is involved in the enzymatic resetting of the pyruvate dehydrogenase complex.

Nanjing BYabscience technology Co.,Ltd



Alternative splicing results in multiple transcript variants encoding the same protein. [provided by RefSeq, Aug 2016],

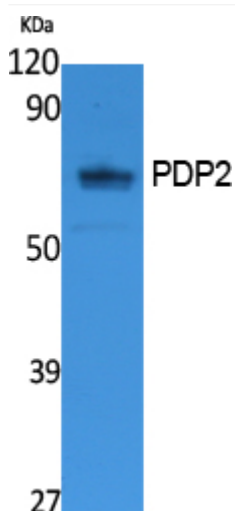
matters needing attention

Avoid repeated freezing and thawing!

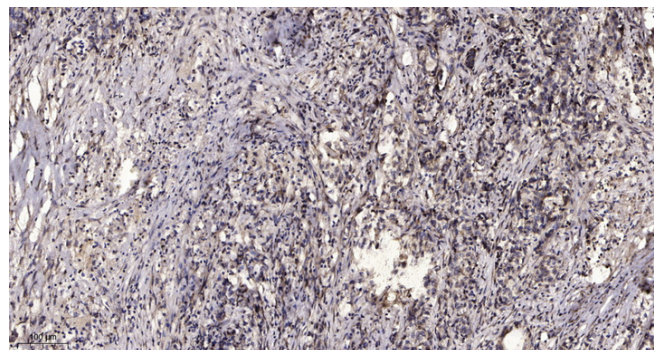
Usage suggestions

This product can be used in immunological reaction related experiments. For more information, please consult technical personnel.

Products Images



Western Blot analysis of extracts from K562 cells, using PDP2 Polyclonal Antibody. Secondary antibody(catalog#:RS0002) was diluted at 1:20000



Immunohistochemical analysis of paraffin-embedded human Gastric adenocarcinoma. 1, Antibody was diluted at 1:200(4° overnight). 2, Tris-EDTA,pH9.0 was used for antigen retrieval. 3,Secondary antibody was diluted at 1:200(room temperature, 45min).