



# Wee 2 Polyclonal Antibody

<b>Catalog No</b>	BYab-15033
<b>Isotype</b>	IgG
<b>Reactivity</b>	Human;Rat;Mouse;
<b>Applications</b>	WB;ELISA
<b>Gene Name</b>	WEE2
<b>Protein Name</b>	Wee1-like protein kinase 2
<b>Immunogen</b>	The antiserum was produced against synthesized peptide derived from human WEE2. AA range:151-200
<b>Specificity</b>	Wee 2 Polyclonal Antibody detects endogenous levels of Wee 2 protein.
<b>Formulation</b>	Liquid in PBS containing 50% glycerol, 0.5% BSA and 0.02% sodium azide.
<b>Source</b>	Polyclonal, Rabbit,IgG
<b>Purification</b>	The antibody was affinity-purified from rabbit antiserum by affinity-chromatography using epitope-specific immunogen.
<b>Dilution</b>	Western Blot: 1/500 - 1/2000. ELISA: 1/5000. Not yet tested in other applications.
<b>Concentration</b>	1 mg/ml
<b>Purity</b>	≥90%
<b>Storage Stability</b>	-20°C/1 year
<b>Synonyms</b>	WEE2; WEE1B; Wee1-like protein kinase 2; Wee1-like protein kinase 1B; Wee1B kinase
<b>Observed Band</b>	60kD
<b>Cell Pathway</b>	Nucleus .
<b>Tissue Specificity</b>	Expressed in oocytes (at protein level) (PubMed:29606300). May also be expressed in testis (PubMed:11029659).
<b>Function</b>	catalytic activity:ATP + a [protein]-L-tyrosine = ADP + a [protein]-L-tyrosine phosphate.,function:Phosphorylates and inhibits CDC2. May act as a negative regulator of entry into mitosis (G2 to M transition).,PTM:Phosphorylated .,similarity:Belongs to the protein kinase superfamily. Ser/Thr protein kinase family. WEE1 subfamily.,similarity:Contains 1 protein kinase domain.,tissue specificity:Expressed in testis.,
<b>Background</b>	catalytic activity:ATP + a [protein]-L-tyrosine = ADP + a [protein]-L-tyrosine phosphate.,function:Phosphorylates and inhibits CDC2. May act as a negative regulator of entry into mitosis (G2 to M transition).,PTM:Phosphorylated

Nanjing BYabscience technology Co.,Ltd



.,similarity:Belongs to the protein kinase superfamily. Ser/Thr protein kinase family. WEE1 subfamily.,similarity:Contains 1 protein kinase domain.,tissue specificity:Expressed in testis.,

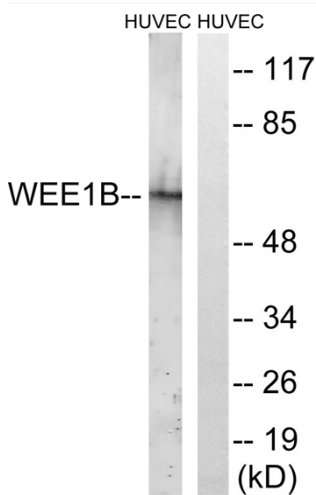
**matters needing attention**

Avoid repeated freezing and thawing!

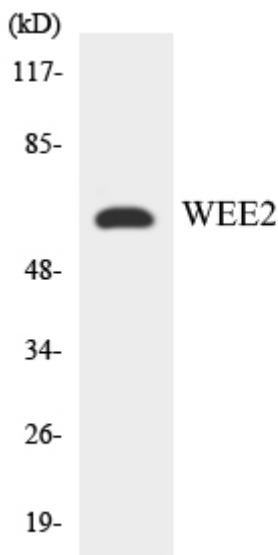
**Usage suggestions**

This product can be used in immunological reaction related experiments. For more information, please consult technical personnel.

**Products Images**



Western blot analysis of lysates from HUVEC cells, using WEE2 Antibody. The lane on the right is blocked with the synthesized peptide.



Western blot analysis of the lysates from K562 cells using WEE2 antibody.