



# VRK2 Polyclonal Antibody

<b>Catalog No</b>	BYab-15030
<b>Isotype</b>	IgG
<b>Reactivity</b>	Human;Mouse
<b>Applications</b>	WB;ELISA
<b>Gene Name</b>	VRK2
<b>Protein Name</b>	Serine/threonine-protein kinase VRK2
<b>Immunogen</b>	The antiserum was produced against synthesized peptide derived from human VRK2. AA range:171-220
<b>Specificity</b>	VRK2 Polyclonal Antibody detects endogenous levels of VRK2 protein.
<b>Formulation</b>	Liquid in PBS containing 50% glycerol, 0.5% BSA and 0.02% sodium azide.
<b>Source</b>	Polyclonal, Rabbit,IgG
<b>Purification</b>	The antibody was affinity-purified from rabbit antiserum by affinity-chromatography using epitope-specific immunogen.
<b>Dilution</b>	Western Blot: 1/500 - 1/2000. ELISA: 1/20000. Not yet tested in other applications.
<b>Concentration</b>	1 mg/ml
<b>Purity</b>	≥90%
<b>Storage Stability</b>	-20°C/1 year
<b>Synonyms</b>	VRK2; Serine/threonine-protein kinase VRK2; Vaccinia-related kinase 2
<b>Observed Band</b>	55kD
<b>Cell Pathway</b>	[Isoform 1]: Cytoplasm . Endoplasmic reticulum membrane ; Single-pass type IV membrane protein . Mitochondrion membrane ; Single-pass type IV membrane protein . Nucleus envelope .; [Isoform 2]: Cytoplasm . Nucleus .
<b>Tissue Specificity</b>	Isoform 1 and isoform 2 are expressed in various tumor cell lines. Expression of isoform 1 inversely correlates with ERBB2 in breast carcinomas (at protein level). Widely expressed. Highly expressed in fetal liver, skeletal muscle, pancreas, heart, peripheral blood leukocytes and testis.
<b>Function</b>	catalytic activity:ATP + a protein = ADP + a phosphoprotein.,function:Probable serine/threonine kinase.,similarity:Belongs to the protein kinase superfamily. CK1 Ser/Thr protein kinase family. VRK subfamily.,similarity:Contains 1 protein kinase domain.,tissue specificity:Widely expressed. Highly expressed in fetal liver, skeletal muscle, pancreas, heart, peripheral blood leukocytes and testis.,
<b>Background</b>	vaccinia related kinase 2(VRK2) Homo sapiens This gene encodes a member of the vaccinia-related kinase (VRK) family of serine/threonine protein kinases.

Nanjing BYabscience technology Co.,Ltd



The encoded protein acts as an effector of signaling pathways that regulate apoptosis and tumor cell growth. Variants in this gene have been associated with schizophrenia. Alternative splicing results in multiple transcript variants that differ in their subcellular localization and biological activity. [provided by RefSeq, Jan 2014],

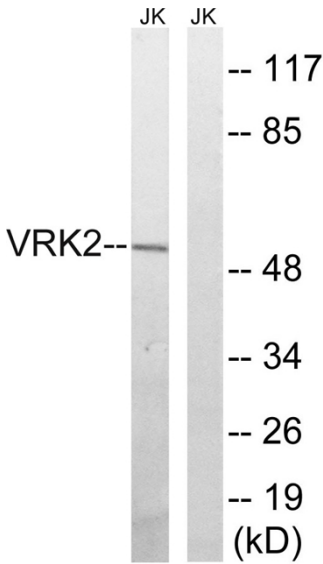
**matters needing attention**

Avoid repeated freezing and thawing!

**Usage suggestions**

This product can be used in immunological reaction related experiments. For more information, please consult technical personnel.

## Products Images



Western blot analysis of lysates from Jurkat cells, using VRK2 Antibody. The lane on the right is blocked with the synthesized peptide.