



# Tyk 2 Polyclonal Antibody

<b>Catalog No</b>	BYab-15026
<b>Isotype</b>	IgG
<b>Reactivity</b>	Human;Mouse;Monkey
<b>Applications</b>	WB;IHC;IF;ELISA
<b>Gene Name</b>	TYK2
<b>Protein Name</b>	Non-receptor tyrosine-protein kinase TYK2
<b>Immunogen</b>	The antiserum was produced against synthesized peptide derived from human TYK2. AA range:1020-1069
<b>Specificity</b>	Tyk 2 Polyclonal Antibody detects endogenous levels of Tyk 2 protein.
<b>Formulation</b>	Liquid in PBS containing 50% glycerol, 0.5% BSA and 0.02% sodium azide.
<b>Source</b>	Polyclonal, Rabbit,IgG
<b>Purification</b>	The antibody was affinity-purified from rabbit antiserum by affinity-chromatography using epitope-specific immunogen.
<b>Dilution</b>	Western Blot: 1/500 - 1/2000. Immunohistochemistry: 1/100 - 1/300. Immunofluorescence: 1/200 - 1/1000. ELISA: 1/10000. Not yet tested in other applications.
<b>Concentration</b>	1 mg/ml
<b>Purity</b>	≥90%
<b>Storage Stability</b>	-20°C/1 year
<b>Synonyms</b>	TYK2; Non-receptor tyrosine-protein kinase TYK2
<b>Observed Band</b>	134kD
<b>Cell Pathway</b>	nucleus, cytoplasm, cytosol, cytoskeleton, membrane, extrinsic component of cytoplasmic side of plasma membrane, extracellular exosome,
<b>Tissue Specificity</b>	Observed in all cell lines analyzed. Expressed in a variety of lymphoid and non-lymphoid cell lines.
<b>Function</b>	catalytic activity:ATP + a [protein]-L-tyrosine = ADP + a [protein]-L-tyrosine phosphate.,disease:Defects in TYK2 are the cause of protein-tyrosine kinase 2 deficiency (TYK2 deficiency) [MIM:611521]; also called autosomal recessive hyper-IgE syndrome (HIES) with atypical mycobacteriosis. The syndrome consists of a primary immunodeficiency characterized by recurrent skin abscesses, pneumonia, and highly elevated serum IgE.,domain:The FERM domain mediates interaction with JAKMIP1.,function:Probably involved in intracellular signal transduction by being involved in the initiation of type I IFN signaling. Phosphorylates the interferon-alpha/beta receptor alpha chain.,online

Nanjing BYabscience technology Co.,Ltd



information:TYK2 mutation db,similarity:Belongs to the protein kinase superfamily. Tyr protein kinase family. JAK subfamily.,similarity:Contains 1 FERM domain.,similarity:Contains 1 protein kinase domain.,similarity:Conta

**Background**

tyrosine kinase 2(TYK2) Homo sapiens This gene encodes a member of the tyrosine kinase and, more specifically, the Janus kinases (JAKs) protein families. This protein associates with the cytoplasmic domain of type I and type II cytokine receptors and promulgate cytokine signals by phosphorylating receptor subunits. It is also component of both the type I and type III interferon signaling pathways. As such, it may play a role in anti-viral immunity. A mutation in this gene has been associated with hyperimmunoglobulin E syndrome (HIES) - a primary immunodeficiency characterized by elevated serum immunoglobulin E. [provided by RefSeq, Jul 2008],

**matters needing attention**

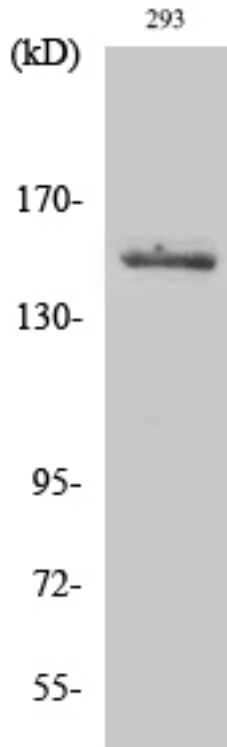
Avoid repeated freezing and thawing!

**Usage suggestions**

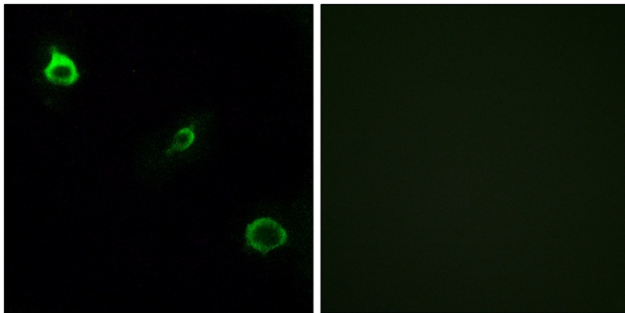
This product can be used in immunological reaction related experiments. For more information, please consult technical personnel.



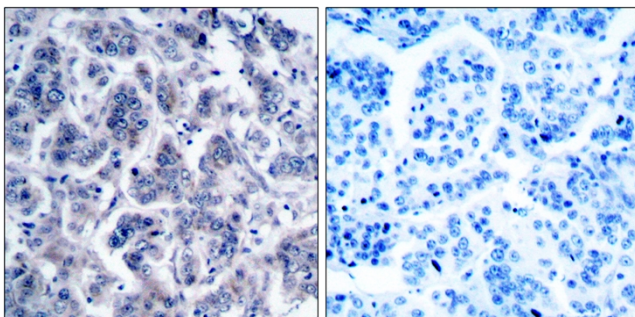
## Products Images



Western Blot analysis of various cells using Tyk 2 Polyclonal Antibody diluted at 1:2000. Secondary antibody(catalog#:RS0002) was diluted at 1:20000

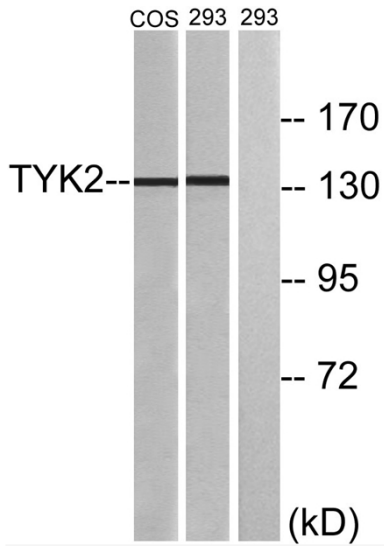


Immunofluorescence analysis of COS7 cells, using TYK2 Antibody. The picture on the right is blocked with the synthesized peptide.



Immunohistochemistry analysis of paraffin-embedded human breast carcinoma tissue, using TYK2 Antibody. The picture on the right is blocked with the synthesized peptide.

Nanjing BYabscience technology Co.,Ltd



Western blot analysis of lysates from 293 and COS7 cells, treated with heat shock, using TYK2 Antibody. The lane on the right is blocked with the synthesized peptide.