



TSSK 6 Polyclonal Antibody

Catalog No	BYab-15023
Isotype	IgG
Reactivity	Human;Mouse;Rat;
Applications	IHC;IF;ELISA
Gene Name	TSSK6
Protein Name	Testis-specific serine/threonine-protein kinase 6
Immunogen	Synthesized peptide derived from the Internal region of human TSSK 6.
Specificity	TSSK 6 Polyclonal Antibody detects endogenous levels of TSSK 6 protein.
Formulation	Liquid in PBS containing 50% glycerol, 0.5% BSA and 0.02% sodium azide.
Source	Polyclonal, Rabbit,IgG
Purification	The antibody was affinity-purified from rabbit antiserum by affinity-chromatography using epitope-specific immunogen.
Dilution	IHC: 1/100 - 1/300. ELISA: 1/40000.. IF 1:50-200
Concentration	1 mg/ml
Purity	≥90%
Storage Stability	-20°C/1 year
Synonyms	TSSK6; SSTK; FKSG82; Testis-specific serine/threonine-protein kinase 6; TSK-6; TSSK-6; Testis-specific kinase 6; Cancer/testis antigen 72; CT72; Serine/threonine-protein kinase SSTK; Small serine/threonine kinase
Observed Band	
Cell Pathway	nucleus,cytoplasm,
Tissue Specificity	Highly expressed in testis. Expressed at lower levels in colon, small intestine, ovary, prostate, thymus, spleen and peripheral blood leukocytes.
Function	catalytic activity:ATP + a protein = ADP + a phosphoprotein.,cofactor:Magnesium.,function:Required for sperm production and function. Plays a role in DNA condensation during postmeiotic chromatin remodeling.,PTM:Autophosphorylated.,similarity:Belongs to the protein kinase superfamily. CAMK Ser/Thr protein kinase family.,similarity:Contains 1 protein kinase domain.,subunit:Interacts with the heatshock proteins HSPCB, HSPA8 and HAPA1A. These interactions appear to be required for TSSK6 kinase activity.,tissue specificity:Highly expressed in testis. Expressed at lower levels in human colon, small intestine, ovary, prostate, thymus, spleen and peripheral

Nanjing BYabscience technology Co.,Ltd



blood leukocytes.,

Background

This intronless gene encodes a member of the CAMK (calcium/calmodulin-dependent) serine/threonine protein kinase family. The encoded kinase has a broad expression pattern but is described as testis-specific due to effects on fertility. Male mice which lack the gene encoding a highly similar protein are sterile and have morphologically abnormal sperm. [provided by RefSeq, Jan 2012],

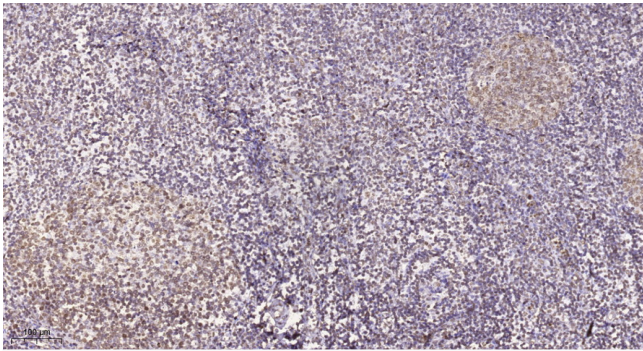
matters needing attention

Avoid repeated freezing and thawing!

Usage suggestions

This product can be used in immunological reaction related experiments. For more information, please consult technical personnel.

Products Images



Immunohistochemical analysis of paraffin-embedded human tonsil. 1, Tris-EDTA,pH9.0 was used for antigen retrieval. 2 Antibody was diluted at 1:200(4° overnight).3,Secondary antibody was diluted at 1:200(room temperature, 45min).