



Thymidine Kinase Polyclonal Antibody

Catalog No	BYab-15015
Isotype	IgG
Reactivity	Human;Monkey
Applications	WB;IHC
Gene Name	TK1
Protein Name	Thymidine kinase cytosolic
Immunogen	The antiserum was produced against synthesized peptide derived from human KITH. AA range:161-210
Specificity	Thymidine Kinase Polyclonal Antibody detects endogenous levels of Thymidine Kinase protein.
Formulation	Liquid in PBS containing 50% glycerol, 0.5% BSA and 0.02% sodium azide.
Source	Polyclonal, Rabbit,IgG
Purification	The antibody was affinity-purified from rabbit antiserum by affinity-chromatography using epitope-specific immunogen.
Dilution	WB 1:500-2000;IHC-p 1:50-300
Concentration	1 mg/ml
Purity	≥90%
Storage Stability	-20°C/1 year
Synonyms	TK1; Thymidine kinase; cytosolic
Observed Band	25kD
Cell Pathway	Cytoplasm.
Tissue Specificity	Epithelium,Lymph,Skin,Uterus,
Function	catalytic activity:ATP + thymidine = ADP + thymidine 5'-phosphate.,miscellaneous:Two forms have been identified in animal cells, one in cytosol and one in mitochondria. Activity of the cytosolic enzyme is high in proliferating cells and peaks during the S-phase of the cell cycle; it is very low in resting cells.,PTM:Phosphorylated on Ser-13 in mitosis.,similarity:Belongs to the thymidine kinase family.,
Background	catalytic activity:ATP + thymidine = ADP + thymidine 5'-phosphate.,miscellaneous:Two forms have been identified in animal cells, one in cytosol and one in mitochondria. Activity of the cytosolic enzyme is high in proliferating cells and peaks during the S-phase of the cell cycle; it is very low in

Nanjing BYabscience technology Co.,Ltd



resting cells.,PTM:Phosphorylated on Ser-13 in mitosis.,similarity:Belongs to the thymidine kinase family.,

matters needing attention

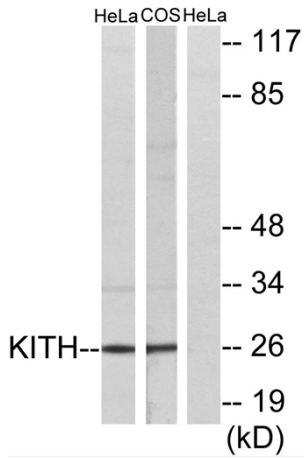
Avoid repeated freezing and thawing!

Usage suggestions

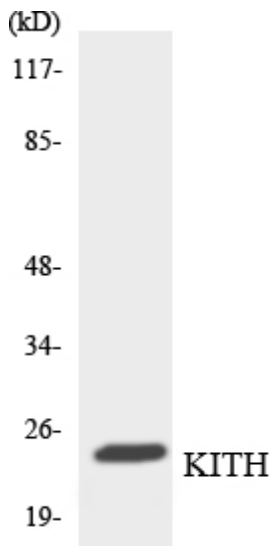
This product can be used in immunological reaction related experiments. For more information, please consult technical personnel.



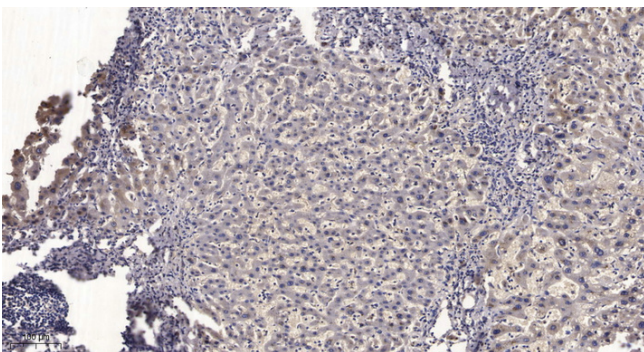
Products Images



Western blot analysis of lysates from HeLa and COS7 cells, using KITH Antibody. The lane on the right is blocked with the synthesized peptide.



Western blot analysis of the lysates from RAW264.7 cells using KITH antibody.



Immunohistochemical analysis of paraffin-embedded human liver cancer. 1, Antibody was diluted at 1:200(4° overnight). 2, Tris-EDTA,pH9.0 was used for antigen retrieval. 3,Secondary antibody was diluted at 1:200(room temperature, 45min).