



# THC2 Polyclonal Antibody

<b>Catalog No</b>	BYab-15014
<b>Isotype</b>	IgG
<b>Reactivity</b>	Human;Mouse
<b>Applications</b>	WB;IHC;IF;ELISA
<b>Gene Name</b>	MASTL
<b>Protein Name</b>	Serine/threonine-protein kinase greatwall
<b>Immunogen</b>	The antiserum was produced against synthesized peptide derived from human MASTL. AA range:821-870
<b>Specificity</b>	THC2 Polyclonal Antibody detects endogenous levels of THC2 protein.
<b>Formulation</b>	Liquid in PBS containing 50% glycerol, 0.5% BSA and 0.02% sodium azide.
<b>Source</b>	Polyclonal, Rabbit,IgG
<b>Purification</b>	The antibody was affinity-purified from rabbit antiserum by affinity-chromatography using epitope-specific immunogen.
<b>Dilution</b>	WB: 1/500 - 1/2000. IHC: 1/100 - 1/300. ELISA: 1/20000.. IF 1:50-200
<b>Concentration</b>	1 mg/ml
<b>Purity</b>	≥90%
<b>Storage Stability</b>	-20°C/1 year
<b>Synonyms</b>	MASTL; GW; GWL; THC2; Serine/threonine-protein kinase greatwall; GW; GWL; hGWL; Microtubule-associated serine/threonine-protein kinase-like; MAST-L
<b>Observed Band</b>	97kD
<b>Cell Pathway</b>	Cytoplasm, cytoskeleton, microtubule organizing center, centrosome . Nucleus . Cleavage furrow . During interphase is mainly nuclear, upon nuclear envelope breakdown localizes at the cytoplasm and during mitosis at the centrosomes. Upon mitotic exit moves to the cleavage furrow. .
<b>Tissue Specificity</b>	Epithelium,Placenta,
<b>Function</b>	catalytic activity:ATP + a protein = ADP + a phosphoprotein.,disease:Defects in MASTL are the cause of thrombocytopenia type 2 (THC2) [MIM:188000]. Thrombocytopenia is defined by a decrease in the number of platelets in circulating blood, resulting in the potential for increased bleeding and decreased ability for clotting.,function:Putative serine/threonine kinase which may be involved in megakaryocyte differentiation.,similarity:Belongs to the protein kinase superfamily. AGC Ser/Thr protein kinase family.,similarity:Contains 1 AGC-kinase C-terminal domain.,similarity:Contains 1 protein kinase domain.,

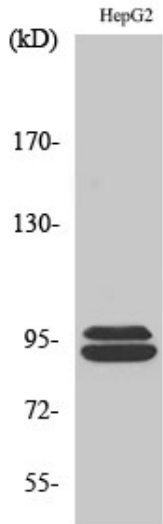
Nanjing BYabscience technology Co.,Ltd



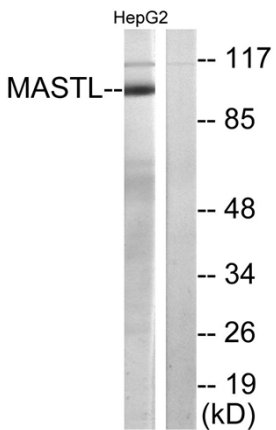
<b>Background</b>	This gene encodes a microtubule-associated serine/threonine kinase. Mutations at this locus have been associated with autosomal dominant thrombocytopenia, also known as thrombocytopenia-2. Alternatively spliced transcript variants have been described for this locus. [provided by RefSeq, Feb 2010],
<b>matters needing attention</b>	Avoid repeated freezing and thawing!
<b>Usage suggestions</b>	This product can be used in immunological reaction related experiments. For more information, please consult technical personnel.



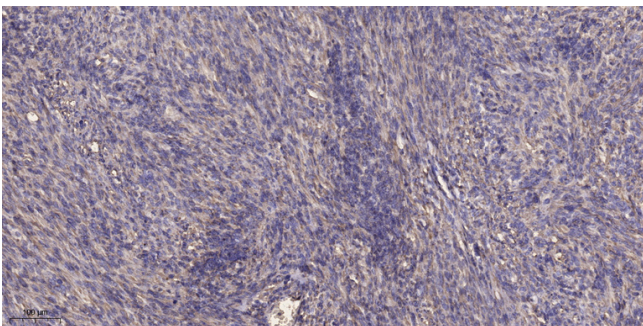
## Products Images



Western Blot analysis of various cells using THC2 Polyclonal Antibody



Western blot analysis of lysates from HepG2 cells, using MASTL Antibody. The lane on the right is blocked with the synthesized peptide.



Immunohistochemical analysis of paraffin-embedded human Colon cancer. 1, Antibody was diluted at 1:200(4° overnight). 2, Tris-EDTA,pH9.0 was used for antigen retrieval. 3,Secondary antibody was diluted at 1:200(room temperature, 45min).