



# SSH3 Polyclonal Antibody

<b>Catalog No</b>	BYab-15003
<b>Isotype</b>	IgG
<b>Reactivity</b>	Human;Mouse;Rat
<b>Applications</b>	WB;IHC;IF;ELISA
<b>Gene Name</b>	SSH3
<b>Protein Name</b>	Protein phosphatase Slingshot homolog 3
<b>Immunogen</b>	The antiserum was produced against synthesized peptide derived from human SSH3. AA range:357-406
<b>Specificity</b>	SSH3 Polyclonal Antibody detects endogenous levels of SSH3 protein.
<b>Formulation</b>	Liquid in PBS containing 50% glycerol, 0.5% BSA and 0.02% sodium azide.
<b>Source</b>	Polyclonal, Rabbit,IgG
<b>Purification</b>	The antibody was affinity-purified from rabbit antiserum by affinity-chromatography using epitope-specific immunogen.
<b>Dilution</b>	WB: 1/500 - 1/2000. IHC: 1/100 - 1/300. ELISA: 1/40000.. IF 1:50-200
<b>Concentration</b>	1 mg/ml
<b>Purity</b>	≥90%
<b>Storage Stability</b>	-20°C/1 year
<b>Synonyms</b>	SSH3; SSH3L; Protein phosphatase Slingshot homolog 3; SSH-like protein 3; SSH-3L; hSSH-3L
<b>Observed Band</b>	74kD
<b>Cell Pathway</b>	Cytoplasm, cytoskeleton . Nucleus .
<b>Tissue Specificity</b>	Cerebellum,Epithelium,Ovarian carcinoma,Uterus,
<b>Function</b>	catalytic activity:A phosphoprotein + H(2)O = a protein + phosphate.,catalytic activity:Protein tyrosine phosphate + H(2)O = protein tyrosine + phosphate.,function:Protein phosphatase which may play a role in the regulation of actin filament dynamics. Can dephosphorylate and activate the actin binding/depolymerizing factor cofilin, which subsequently binds to actin filaments and stimulates their disassembly.,miscellaneous:Tyrosine phosphatase activity has not been demonstrated for this protein to date.,PTM:Phosphorylated upon DNA damage, probably by ATM or ATR.,similarity:Belongs to the protein-tyrosine phosphatase family.,similarity:Contains 1 tyrosine-protein phosphatase domain.,subunit:Does not bind to, or colocalize with, filamentous actin.,

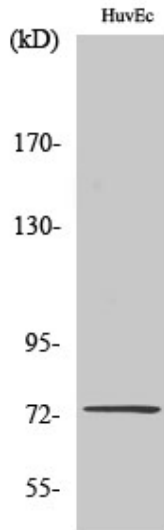
Nanjing BYabscience technology Co.,Ltd



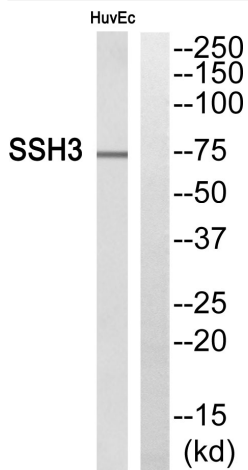
<b>Background</b>	The ADF (actin-depolymerizing factor)/cofilin family (see MIM 601442) is composed of stimulus-responsive mediators of actin dynamics. ADF/cofilin proteins are inactivated by kinases such as LIM domain kinase-1 (LIMK1; MIM 601329). The SSH family appears to play a role in actin dynamics by reactivating ADF/cofilin proteins in vivo (Niwa et al., 2002 [PubMed 11832213]).[supplied by OMIM, Mar 2008],
<b>matters needing attention</b>	Avoid repeated freezing and thawing!
<b>Usage suggestions</b>	This product can be used in immunological reaction related experiments. For more information, please consult technical personnel.



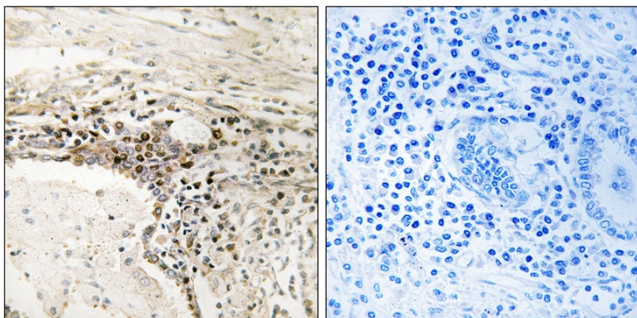
## Products Images



Western Blot analysis of various cells using SSH3 Polyclonal Antibody

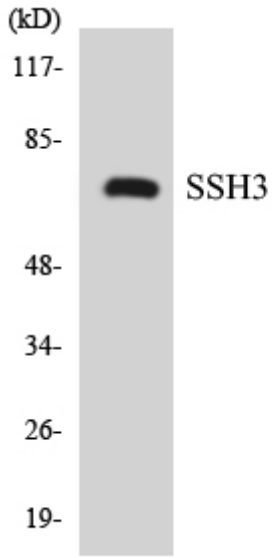


Western blot analysis of SSH3 Antibody. The lane on the right is blocked with the SSH3 peptide.



Immunohistochemistry analysis of paraffin-embedded human lung carcinoma, using SSH3 Antibody. The lane on the right is blocked with the SSH3 peptide.

Nanjing BYabscience technology Co.,Ltd



Western blot analysis of the lysates from K562 cells using SSH3 antibody.