



SRPK3 Polyclonal Antibody

Catalog No	BYab-15002
Isotype	IgG
Reactivity	Human;Mouse;Rat
Applications	WB;ELISA
Gene Name	SRPK3
Protein Name	SRSF protein kinase 3
Immunogen	The antiserum was produced against synthesized peptide derived from human SRPK3. AA range:261-310
Specificity	SRPK3 Polyclonal Antibody detects endogenous levels of SRPK3 protein.
Formulation	Liquid in PBS containing 50% glycerol, 0.5% BSA and 0.02% sodium azide.
Source	Polyclonal, Rabbit,IgG
Purification	The antibody was affinity-purified from rabbit antiserum by affinity-chromatography using epitope-specific immunogen.
Dilution	Western Blot: 1/500 - 1/2000. ELISA: 1/10000. Not yet tested in other applications.
Concentration	1 mg/ml
Purity	≥90%
Storage Stability	-20°C/1 year
Synonyms	SRPK3; MSSK1; STK23; SRSF protein kinase 3; Muscle-specific serine kinase 1; MSSK-1; Serine/arginine-rich protein-specific kinase 3; SR-protein-specific kinase 3; Serine/threonine-protein kinase 23
Observed Band	60kD
Cell Pathway	
Tissue Specificity	Exclusively expressed in skeletal and heart muscle.
Function	catalytic activity:ATP + a protein = ADP + a phosphoprotein.,function:Required for normal muscle development.,similarity:Belongs to the protein kinase superfamily.,similarity:Belongs to the protein kinase superfamily. CMGC Ser/Thr protein kinase family.,similarity:Contains 1 protein kinase domain.,tissue specificity:Exclusively expressed in skeletal and heart muscle.,
Background	This gene encodes a protein kinase similar to a protein kinase which is specific for the SR (serine/arginine-rich domain) family of splicing factors. A highly similar protein has been shown to play a role in muscle development in mice. Multiple

Nanjing BYabscience technology Co.,Ltd



transcript variants encoding different isoforms have been found for this gene. [provided by RefSeq, Dec 2009],

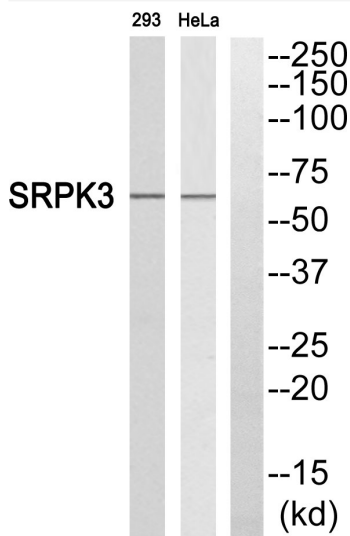
matters needing attention

Avoid repeated freezing and thawing!

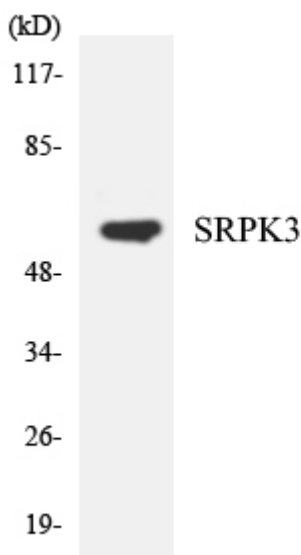
Usage suggestions

This product can be used in immunological reaction related experiments. For more information, please consult technical personnel.

Products Images



Western blot analysis of SRPK3 Antibody. The lane on the right is blocked with the SRPK3 peptide.



Western blot analysis of the lysates from HeLa cells using SRPK3 antibody.

Nanjing BYabscience technology Co.,Ltd