



SgK288 Polyclonal Antibody

Catalog No	BYab-14987
Isotype	IgG
Reactivity	Human;Rat;Mouse;
Applications	WB;ELISA
Gene Name	ANKK1
Protein Name	Ankyrin repeat and protein kinase domain-containing protein 1
Immunogen	The antiserum was produced against synthesized peptide derived from human ANKK1. AA range:321-370
Specificity	SgK288 Polyclonal Antibody detects endogenous levels of SgK288 protein.
Formulation	Liquid in PBS containing 50% glycerol, 0.5% BSA and 0.02% sodium azide.
Source	Polyclonal, Rabbit,IgG
Purification	The antibody was affinity-purified from rabbit antiserum by affinity-chromatography using epitope-specific immunogen.
Dilution	Western Blot: 1/500 - 1/2000. ELISA: 1/20000. Not yet tested in other applications.
Concentration	1 mg/ml
Purity	≥90%
Storage Stability	-20°C/1 year
Synonyms	ANKK1; PKK2; SGK288; Ankyrin repeat and protein kinase domain-containing protein 1; Protein kinase PKK2; Sugen kinase 288; SgK288; X-kinase
Observed Band	84kD
Cell Pathway	
Tissue Specificity	Highly expressed in brain and weakly expressed in placenta and spinal cord.
Function	catalytic activity:ATP + a protein = ADP + a phosphoprotein.,similarity:Belongs to the protein kinase superfamily. TKL Ser/Thr protein kinase family.,similarity:Contains 1 protein kinase domain.,similarity:Contains 12 ANK repeats.,tissue specificity:Highly expressed in brain and weakly expressed in placenta and spinal cord.,
Background	The protein encoded by this gene belongs to the Ser/Thr protein kinase family, and protein kinase superfamily involved in signal transduction pathways. This gene is closely linked to DRD2 gene (GeneID:1813) on chr 11, and a well studied restriction fragment length polymorphism (RFLP) designated TaqIA, was originally

Nanjing BYabscience technology Co.,Ltd



associated with the DRD2 gene, however, later was determined to be located in exon 8 of ANKK1 gene (PMIDs: 18621654, 15146457), where it causes a nonconservative amino acid substitution. It is not clear if this gene plays any role in neuropsychiatric disorders previously associated with Taq1A RFLP. [provided by RefSeq, Sep 2009],

matters needing attention

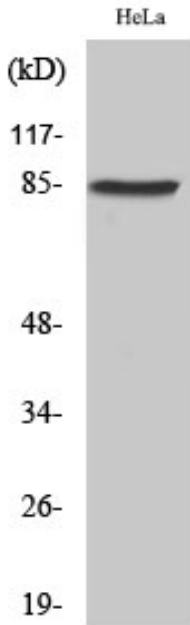
Avoid repeated freezing and thawing!

Usage suggestions

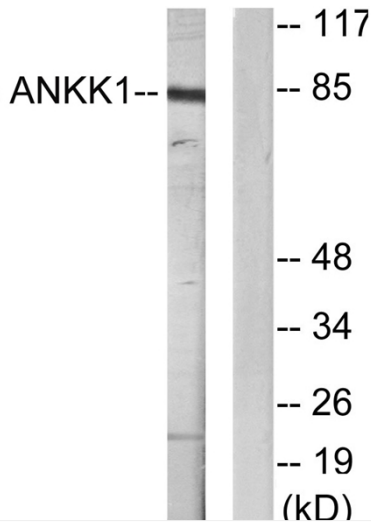
This product can be used in immunological reaction related experiments. For more information, please consult technical personnel.



Products Images



Western Blot analysis of various cells using SgK288 Polyclonal Antibody



Western blot analysis of lysates from HeLa cells, using ANKK1 Antibody. The lane on the right is blocked with the synthesized peptide.