



Rsk-4 Polyclonal Antibody

Catalog No	BYab-14984
Isotype	IgG
Reactivity	Human;Rat;Mouse;
Applications	WB;IHC;IF;ELISA
Gene Name	RPS6KA6
Protein Name	Ribosomal protein S6 kinase alpha-6
Immunogen	The antiserum was produced against synthesized peptide derived from human S6K-alpha6. AA range:661-710
Specificity	Rsk-4 Polyclonal Antibody detects endogenous levels of Rsk-4 protein.
Formulation	Liquid in PBS containing 50% glycerol, 0.5% BSA and 0.02% sodium azide.
Source	Polyclonal, Rabbit,IgG
Purification	The antibody was affinity-purified from rabbit antiserum by affinity-chromatography using epitope-specific immunogen.
Dilution	WB: 1/500 - 1/2000. IHC: 1/100 - 1/300. ELISA: 1/10000.. IF 1:50-200
Concentration	1 mg/ml
Purity	≥90%
Storage Stability	-20°C/1 year
Synonyms	RPS6KA6; RSK4; Ribosomal protein S6 kinase alpha-6; S6K-alpha-6; 90 kDa ribosomal protein S6 kinase 6; p90-RSK 6; p90RSK6; Ribosomal S6 kinase 4; RSK-4; pp90RSK4
Observed Band	84kD
Cell Pathway	Cytoplasm, cytosol . Nucleus . Predominantly cytosolic.
Tissue Specificity	
Function	catalytic activity:ATP + a protein = ADP + a phosphoprotein.,cofactor:Magnesium.,enzyme regulation:Activated by multiple phosphorylations on threonine and serine residues.,function:Serine/threonine kinase that may play a role in mediating the growth-factor and stress induced activation of the transcription factor CREB.,PTM:Autophosphorylated on Ser-389, as part of the activation process.,similarity:Belongs to the protein kinase superfamily. AGC Ser/Thr protein kinase family. S6 kinase subfamily.,similarity:Contains 1 AGC-kinase C-terminal domain.,similarity:Contains 2 protein kinase domains.,subunit:Forms a complex

Nanjing BYabscience technology Co.,Ltd



with either ERK1 or ERK2 in quiescent cells. Transiently dissociates following mitogenic stimulation.,

Background

ribosomal protein S6 kinase A6(RPS6KA6) Homo sapiens This gene encodes a member of ribosomal S6 kinase family, serine-threonine protein kinases which are regulated by growth factors. The encoded protein may be distinct from other members of this family, however, as studies suggest it is not growth factor dependent and may not participate in the same signaling pathways. [provided by RefSeq, Jan 2010],

matters needing attention

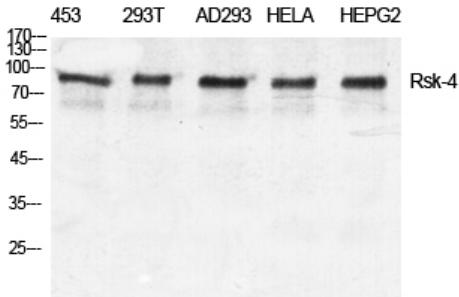
Avoid repeated freezing and thawing!

Usage suggestions

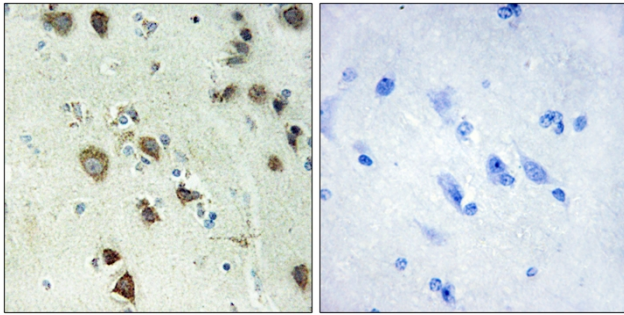
This product can be used in immunological reaction related experiments. For more information, please consult technical personnel.



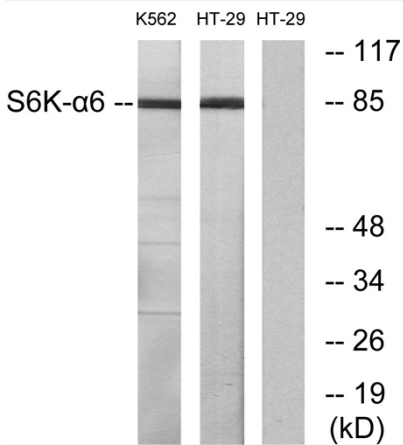
Products Images



Western Blot analysis of various cells using Rsk-4 Polyclonal Antibody diluted at 1:500



Immunohistochemistry analysis of paraffin-embedded human brain tissue, using S6K-alpha6 Antibody. The picture on the right is blocked with the synthesized peptide.



Western blot analysis of lysates from K562 and HT-29 cells, using S6K-alpha6 Antibody. The lane on the right is blocked with the synthesized peptide.