



Rock-2 Polyclonal Antibody

Catalog No	BYab-14980
Isotype	IgG
Reactivity	Human;Mouse;Rat;Monkey
Applications	IF;WB;IHC;ELISA
Gene Name	ROCK2
Protein Name	Rho-associated protein kinase 2
Immunogen	The antiserum was produced against synthesized peptide derived from human ROCK2. AA range:691-740
Specificity	Rock-2 Polyclonal Antibody detects endogenous levels of Rock-2 protein.
Formulation	Liquid in PBS containing 50% glycerol, 0.5% BSA and 0.02% sodium azide.
Source	Polyclonal, Rabbit,IgG
Purification	The antibody was affinity-purified from rabbit antiserum by affinity-chromatography using epitope-specific immunogen.
Dilution	IF: 1:50-200 Western Blot: 1/500 - 1/2000. Immunohistochemistry: 1/100 - 1/300. Immunocytochemistry: 1/200 - 1/1000. ELISA: 1/20000. Not yet tested in other applications.
Concentration	1 mg/ml
Purity	≥90%
Storage Stability	-20°C/1 year
Synonyms	ROCK2; KIAA0619; Rho-associated protein kinase 2; Rho kinase 2; Rho-associated; coiled-coil-containing protein kinase 2; Rho-associated, coiled-coil-containing protein kinase II; ROCK-II; p164 ROCK-2
Observed Band	165kD
Cell Pathway	Cytoplasm. Cell membrane ; Peripheral membrane protein . Nucleus. Cytoplasm, cytoskeleton, microtubule organizing center, centrosome. Cytoplasmic, and associated with actin microfilaments and the plasma membrane. .
Tissue Specificity	Expressed in the brain (at protein level).
Function	catalytic activity:ATP + a protein = ADP + a phosphoprotein.,enzyme regulation:Activated by RHOA binding.,function:Protein kinase that phosphorylates a large number of important signaling proteins, and thereby regulates the assembly of the actin cytoskeleton. Promotes formation of stress fibers and of focal adhesion complexes. Plays a role in smooth muscle contraction.,miscellaneous:Inhibited by Y-27632.,PTM:Phosphorylated upon DNA

Nanjing BYabscience technology Co.,Ltd



damage, probably by ATM or ATR.,similarity:Belongs to the protein kinase superfamily. AGC Ser/Thr protein kinase family.,similarity:Contains 1 AGC-kinase C-terminal domain.,similarity:Contains 1 PH domain.,similarity:Contains 1 phorbol-ester/DAG-type zinc finger.,similarity:Contains 1 protein kinase domain.,similarity:Contains 1 REM (Hr1) repeat.,subcellular location:Cytoplasmic, and associated with actin microfilaments and the plasma membrane.,subunit:Homodim

Background

The protein encoded by this gene is a serine/threonine kinase that regulates cytokinesis, smooth muscle contraction, the formation of actin stress fibers and focal adhesions, and the activation of the c-fos serum response element. This protein, which is an isozyme of ROCK1 is a target for the small GTPase Rho. [provided by RefSeq, Jul 2008],

matters needing attention

Avoid repeated freezing and thawing!

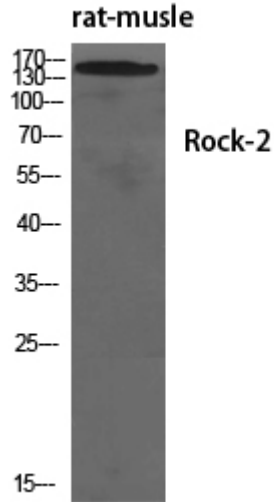
Usage suggestions

This product can be used in immunological reaction related experiments. For more information, please consult technical personnel.

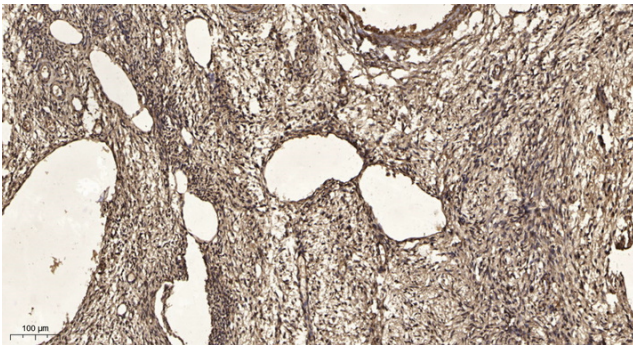
Nanjing BYabscience technology Co.,Ltd



Products Images



Western Blot analysis of various cells using Rock-2 Polyclonal Antibody diluted at 1:1000



Immunohistochemical analysis of paraffin-embedded human oophoroma. 1, Antibody was diluted at 1:200(4° overnight). 2, Tris-EDTA, pH9.0 was used for antigen retrieval. 3, Secondary antibody was diluted at 1:200(room temperature, 45min).