



RIOK1 Polyclonal Antibody

| | |
|----------------------------------|--------------------------------------------------------------------------------------------------------------------------------------------------------------------------------------------------|
| Catalog No | BYab-14978 |
| Isotype | IgG |
| Reactivity | Human;Mouse;Rat |
| Applications | IHC;IF;ELISA |
| Gene Name | RIOK1 |
| Protein Name | Serine/threonine-protein kinase RIO1 |
| Immunogen | Synthesized peptide derived from the Internal region of human RIOK1. |
| Specificity | RIOK1 Polyclonal Antibody detects endogenous levels of RIOK1 protein. |
| Formulation | Liquid in PBS containing 50% glycerol, 0.5% BSA and 0.02% sodium azide. |
| Source | Polyclonal, Rabbit,IgG |
| Purification | The antibody was affinity-purified from rabbit antiserum by affinity-chromatography using epitope-specific immunogen. |
| Dilution | IHC: 1/100 - 1/300. ELISA: 1/40000.. IF 1:50-200 |
| Concentration | 1 mg/ml |
| Purity | ≥90% |
| Storage Stability | -20°C/1 year |
| Synonyms | RIOK1; Serine/threonine-protein kinase RIO1; RIO kinase 1 |
| Observed Band | |
| Cell Pathway | Cytoplasm, cytosol . |
| Tissue Specificity | Adrenal gland,Brain,Cervix carcinoma,Colon adenocarcinoma,Lung,Lung carcinoma, |
| Function | catalytic activity:ATP + a protein = ADP + a phosphoprotein.,similarity:Belongs to the protein kinase superfamily. RIO-type Ser/Thr kinase family.,similarity:Contains 1 protein kinase domain., |
| Background | This gene includes two alternatively spliced transcript variants, which encode different isoforms. The function of this gene has not been determined. [provided by RefSeq, Jul 2008], |
| matters needing attention | Avoid repeated freezing and thawing! |

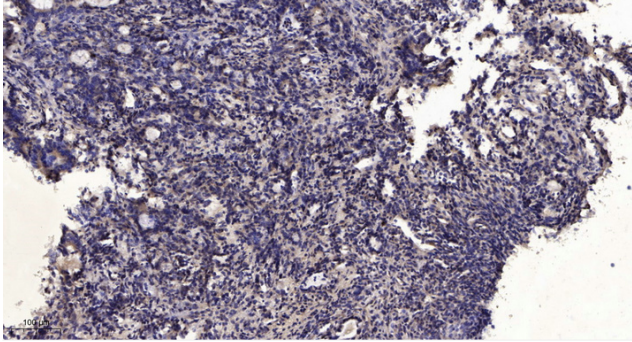
Nanjing BYabscience technology Co.,Ltd



Usage suggestions

This product can be used in immunological reaction related experiments. For more information, please consult technical personnel.

Products Images



Immunohistochemical analysis of paraffin-embedded human Gastric adenocarcinoma. 1, Antibody was diluted at 1:200(4° overnight). 2, Tris-EDTA,pH9.0 was used for antigen retrieval. 3,Secondary antibody was diluted at 1:200(room temperature, 45min).