



# Rak Polyclonal Antibody

<b>Catalog No</b>	BYab-14975
<b>Isotype</b>	IgG
<b>Reactivity</b>	Human;Mouse;Rat
<b>Applications</b>	WB;IHC;IF;ELISA
<b>Gene Name</b>	FRK
<b>Protein Name</b>	Tyrosine-protein kinase FRK
<b>Immunogen</b>	The antiserum was produced against synthesized peptide derived from human FRK. AA range:71-120
<b>Specificity</b>	Rak Polyclonal Antibody detects endogenous levels of Rak protein.
<b>Formulation</b>	Liquid in PBS containing 50% glycerol, 0.5% BSA and 0.02% sodium azide.
<b>Source</b>	Polyclonal, Rabbit,IgG
<b>Purification</b>	The antibody was affinity-purified from rabbit antiserum by affinity-chromatography using epitope-specific immunogen.
<b>Dilution</b>	Western Blot: 1/500 - 1/2000. Immunohistochemistry: 1/100 - 1/300. Immunofluorescence: 1/200 - 1/1000. ELISA: 1/10000. Not yet tested in other applications.
<b>Concentration</b>	1 mg/ml
<b>Purity</b>	≥90%
<b>Storage Stability</b>	-20°C/1 year
<b>Synonyms</b>	FRK; PTK5; RAK; Tyrosine-protein kinase FRK; FYN-related kinase; Nuclear tyrosine protein kinase RAK; Protein-tyrosine kinase 5
<b>Observed Band</b>	55kD
<b>Cell Pathway</b>	Cytoplasm . Nucleus . Predominantly found in the nucleus, with a small fraction found in the cell periphery.
<b>Tissue Specificity</b>	Predominantly expressed in epithelial derived cell lines and tissues, especially normal liver, kidney, breast and colon.
<b>Function</b>	catalytic activity:ATP + a [protein]-L-tyrosine = ADP + a [protein]-L-tyrosine phosphate.,similarity:Belongs to the protein kinase superfamily. Tyr protein kinase family. SRC subfamily.,similarity:Contains 1 protein kinase domain.,similarity:Contains 1 SH2 domain.,similarity:Contains 1 SH3 domain.,tissue specificity:Restricted to cells lines derived from tissues of lymphoid, brain, breast, colon and bladder origin.,
<b>Background</b>	The protein encoded by this gene belongs to the TYR family of protein kinases. This tyrosine kinase is a nuclear protein and may function during G1 and S phase

Nanjing BYabscience technology Co.,Ltd



of the cell cycle and suppress growth. [provided by RefSeq, Jul 2008],

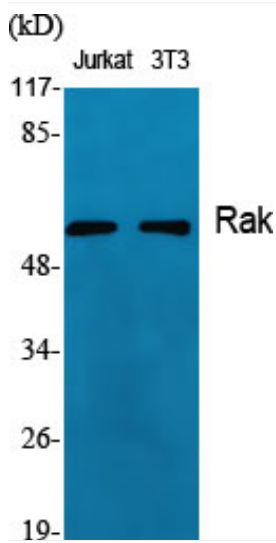
**matters needing attention**

Avoid repeated freezing and thawing!

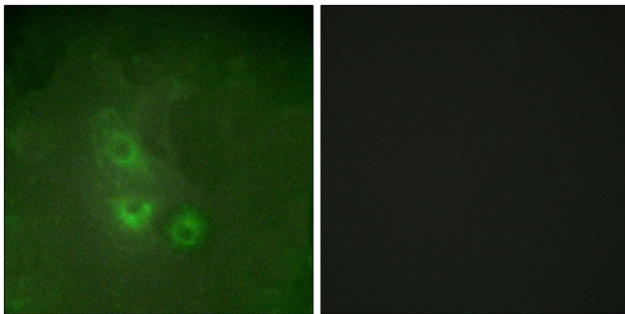
**Usage suggestions**

This product can be used in immunological reaction related experiments. For more information, please consult technical personnel.

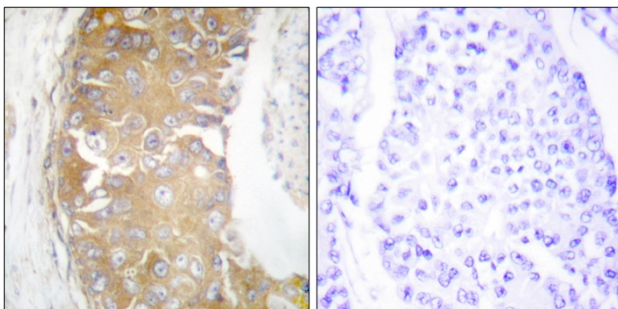
## Products Images



Western Blot analysis of various cells using Rak Polyclonal Antibody

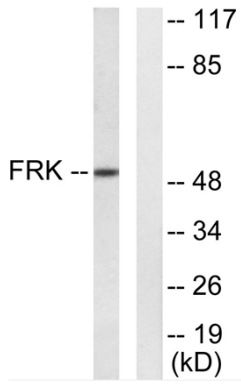


Immunofluorescence analysis of HUVEC cells, using FRK Antibody. The picture on the right is blocked with the synthesized peptide.



Immunohistochemistry analysis of paraffin-embedded human breast carcinoma tissue, using FRK Antibody. The picture on the right is blocked with the synthesized peptide.

Nanjing BYabscience technology Co.,Ltd



Western blot analysis of lysates from Jurkat cells, using FRK Antibody. The lane on the right is blocked with the synthesized peptide.