



QSK Polyclonal Antibody

Catalog No	BYab-14971
Isotype	IgG
Reactivity	Human;Mouse
Applications	WB;IHC;IF;ELISA
Gene Name	SIK3
Protein Name	Serine/threonine-protein kinase SIK3
Immunogen	The antiserum was produced against synthesized peptide derived from human QSK. AA range:521-570
Specificity	QSK Polyclonal Antibody detects endogenous levels of QSK protein.
Formulation	Liquid in PBS containing 50% glycerol, 0.5% BSA and 0.02% sodium azide.
Source	Polyclonal, Rabbit,IgG
Purification	The antibody was affinity-purified from rabbit antiserum by affinity-chromatography using epitope-specific immunogen.
Dilution	WB: 1/500 - 1/2000. IHC: 1/100 - 1/300. ELISA: 1/40000.. IF 1:50-200
Concentration	1 mg/ml
Purity	≥90%
Storage Stability	-20°C/1 year
Synonyms	SIK3; KIAA0999; QSK; L19; Serine/threonine-protein kinase SIK3; Salt-inducible kinase 3; SIK-3; Serine/threonine-protein kinase QSK
Observed Band	140kD
Cell Pathway	Cytoplasm . Locates to punctate structures within the cytoplasm on binding to YWHAZ. .
Tissue Specificity	Expressed in chondrocytes.
Function	similarity:Belongs to the protein kinase superfamily.,
Background	similarity:Belongs to the protein kinase superfamily.,
matters needing attention	Avoid repeated freezing and thawing!

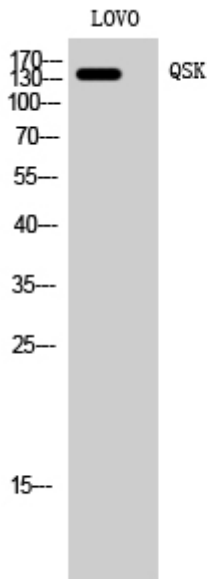
Nanjing BYabscience technology Co.,Ltd



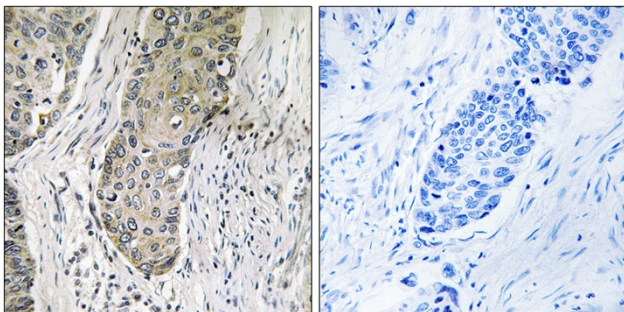
Usage suggestions

This product can be used in immunological reaction related experiments. For more information, please consult technical personnel.

Products Images



Western Blot analysis of LOVO cells using QSK Polyclonal Antibody



Immunohistochemistry analysis of paraffin-embedded human lung carcinoma tissue, using QSK Antibody. The picture on the right is blocked with the synthesized peptide.