



PPP1R2P3 Polyclonal Antibody

Catalog No	BYab-14955
Isotype	IgG
Reactivity	Human;Rat;Mouse;
Applications	IHC;IF;ELISA
Gene Name	PPP1R2P3
Protein Name	Putative protein phosphatase inhibitor 2-like protein 3
Immunogen	Synthesized peptide derived from PPP1R2P3 . at AA range: 40-120
Specificity	PPP1R2P3 Polyclonal Antibody detects endogenous levels of PPP1R2P3 protein.
Formulation	Liquid in PBS containing 50% glycerol, 0.5% BSA and 0.02% sodium azide.
Source	Polyclonal, Rabbit,IgG
Purification	The antibody was affinity-purified from rabbit antiserum by affinity-chromatography using epitope-specific immunogen.
Dilution	IHC: 1/100 - 1/300. ELISA: 1/40000.. IF 1:50-200
Concentration	1 mg/ml
Purity	≥90%
Storage Stability	-20°C/1 year
Synonyms	PPP1R2P3; Putative protein phosphatase inhibitor 2-like protein 3; Protein phosphatase 1; regulatory subunit 2 pseudogene 3
Observed Band	
Cell Pathway	protein phosphatase type 1 complex,
Tissue Specificity	Only detected in spermatozoa, both heads and tails.
Function	caution:Could be the product of a pseudogene.,function:Inhibitor of protein-phosphatase 1.,similarity:Belongs to the protein phosphatase inhibitor 2 family.,
Background	caution:Could be the product of a pseudogene.,function:Inhibitor of protein-phosphatase 1.,similarity:Belongs to the protein phosphatase inhibitor 2 family.,
matters needing attention	Avoid repeated freezing and thawing!

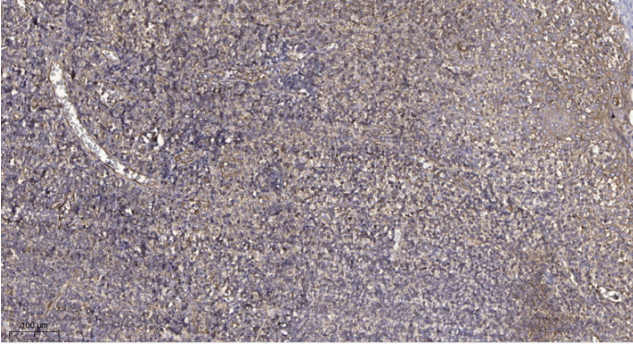
Nanjing BYabscience technology Co.,Ltd



Usage suggestions

This product can be used in immunological reaction related experiments. For more information, please consult technical personnel.

Products Images



Immunohistochemical analysis of paraffin-embedded human tonsil. 1, Antibody was diluted at 1:200(4° overnight). 2, Tris-EDTA,pH9.0 was used for antigen retrieval. 3,Secondary antibody was diluted at 1:200(room temperature, 30min).