



PP2A-B56- α Polyclonal Antibody

Catalog No	BYab-14949
Isotype	IgG
Reactivity	Human;Mouse;Rat
Applications	WB;IHC
Gene Name	PPP2R5A
Protein Name	Serine/threonine-protein phosphatase 2A 56 kDa regulatory subunit alpha isoform
Immunogen	The antiserum was produced against synthesized peptide derived from human PPP2R5A. AA range:321-370
Specificity	PP2A-B56- α Polyclonal Antibody detects endogenous levels of PP2A-B56- α protein.
Formulation	Liquid in PBS containing 50% glycerol, 0.5% BSA and 0.02% sodium azide.
Source	Polyclonal, Rabbit,IgG
Purification	The antibody was affinity-purified from rabbit antiserum by affinity-chromatography using epitope-specific immunogen.
Dilution	WB 1:500-2000;IHC-p 1:50-300
Concentration	1 mg/ml
Purity	$\geq 90\%$
Storage Stability	-20°C/1 year
Synonyms	PPP2R5A; Serine/threonine-protein phosphatase 2A 56 kDa regulatory subunit alpha isoform; PP2A B subunit isoform B'-alpha; PP2A B subunit isoform B56-alpha; PP2A B subunit isoform PR61-alpha; PR61alpha; PP2A B subunit isoform R5-alpha
Observed Band	57kD
Cell Pathway	Cytoplasm . Nucleus . Chromosome, centromere . From mitotic prophase to metaphase, localizes at the inner centromere between a pair of sister kinetochores. Decreased expression at the onset of anaphase. .
Tissue Specificity	Widely expressed with the highest expression in heart and skeletal muscle.
Function	function:The B regulatory subunit might modulate substrate selectivity and catalytic activity, and also might direct the localization of the catalytic enzyme to a particular subcellular compartment.,PTM:Phosphorylated on serine residues.,similarity:Belongs to the phosphatase 2A regulatory subunit B56 family.,subcellular location:From mitotic prophase to metaphase, localizes at the inner centromere between a pair of sister kinetochores. Decreased expression at

Nanjing BYabscience technology Co.,Ltd



the onset of anaphase.,subunit:PP2A consists of a common heterodimeric core enzyme, composed of a 36 kDa catalytic subunit (subunit C) and a 65 kDa constant regulatory subunit (PR65 or subunit A), that associates with a variety of regulatory subunits. Proteins that associate with the core dimer include three families of regulatory subunits B (the R2/B/PR55/B55, R3/B"/PR72/PR130/PR59 and R5/B'/B56 families), the 48 kDa variable regu

Background

The product of this gene belongs to the phosphatase 2A regulatory subunit B family. Protein phosphatase 2A is one of the four major Ser/Thr phosphatases, and it is implicated in the negative control of cell growth and division. It consists of a common heteromeric core enzyme, which is composed of a catalytic subunit and a constant regulatory subunit, that associates with a variety of regulatory subunits. The B regulatory subunit might modulate substrate selectivity and catalytic activity. This gene encodes an alpha isoform of the regulatory subunit B56 subfamily. Alternative transcript variants encoding distinct isoforms have been found for this gene. [provided by RefSeq, Dec 2010],

matters needing attention

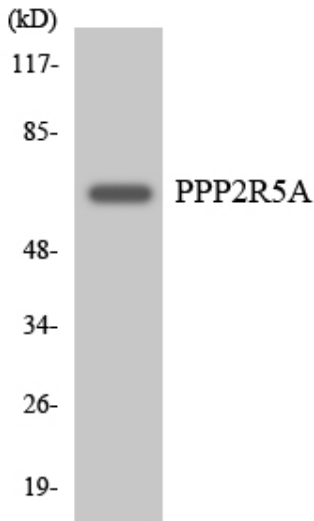
Avoid repeated freezing and thawing!

Usage suggestions

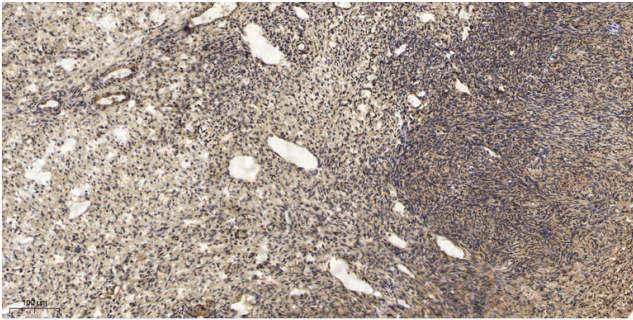
This product can be used in immunological reaction related experiments. For more information, please consult technical personnel.



Products Images



Western blot analysis of the lysates from HeLa cells using PPP2R5A antibody.



Immunohistochemical analysis of paraffin-embedded human oophoroma. 1, Antibody was diluted at 1:200(4° overnight). 2, Tris-EDTA,pH9.0 was used for antigen retrieval. 3,Secondary antibody was diluted at 1:200(room temperature, 45min).