



# PLK-5 Polyclonal Antibody

<b>Catalog No</b>	BYab-14945
<b>Isotype</b>	IgG
<b>Reactivity</b>	Human;Rat;Mouse;
<b>Applications</b>	WB;IHC
<b>Gene Name</b>	PLK5
<b>Protein Name</b>	Inactive serine/threonine-protein kinase PLK5
<b>Immunogen</b>	The antiserum was produced against synthesized peptide derived from human PLK5. AA range:131-180
<b>Specificity</b>	PLK-5 Polyclonal Antibody detects endogenous levels of PLK-5 protein.
<b>Formulation</b>	Liquid in PBS containing 50% glycerol, 0.5% BSA and 0.02% sodium azide.
<b>Source</b>	Polyclonal, Rabbit,IgG
<b>Purification</b>	The antibody was affinity-purified from rabbit antiserum by affinity-chromatography using epitope-specific immunogen.
<b>Dilution</b>	WB 1:500-2000;IHC-p 1:50-300
<b>Concentration</b>	1 mg/ml
<b>Purity</b>	≥90%
<b>Storage Stability</b>	-20°C/1 year
<b>Synonyms</b>	PLK5; PLK5P; FG060302; Inactive serine/threonine-protein kinase PLK5; Polo-like kinase 5; PLK-5
<b>Observed Band</b>	55kD
<b>Cell Pathway</b>	Nucleus, nucleolus . Cytoplasm .
<b>Tissue Specificity</b>	Expressed in the brain, neurons and glial cells. Also expressed in highly differentiated cells, such as the serous acini in the parotid gland, distal and proximal tubules of the kidney, tubules of the seminal gland, Kupffer cells and some hepatocytes in the liver, and some cells in the germinal center of lymph nodes (at protein level).
<b>Function</b>	
<b>Background</b>	PLK5 (Polo Like Kinase 5) is a Protein Coding gene. Gene Ontology (GO) annotations related to PLK5 include transferase activity, transferring phosphorus-containing groups and protein kinase activity. An important paralog of PLK5 is PLK4.

Nanjing BYabscience technology Co.,Ltd



**matters needing attention**

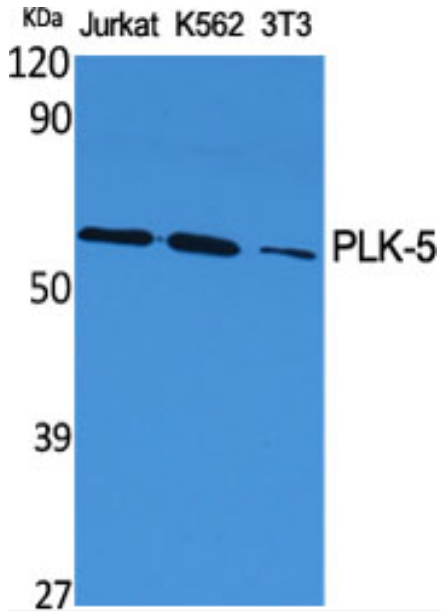
Avoid repeated freezing and thawing!

**Usage suggestions**

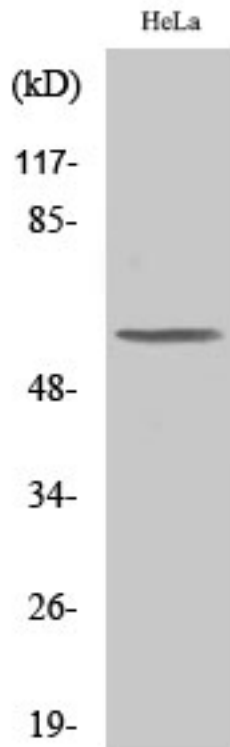
This product can be used in immunological reaction related experiments. For more information, please consult technical personnel.



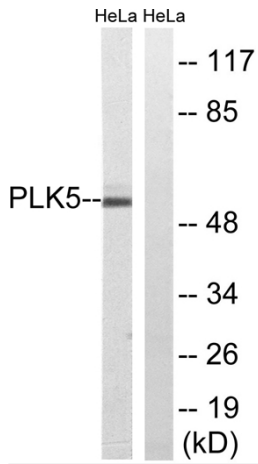
## Products Images



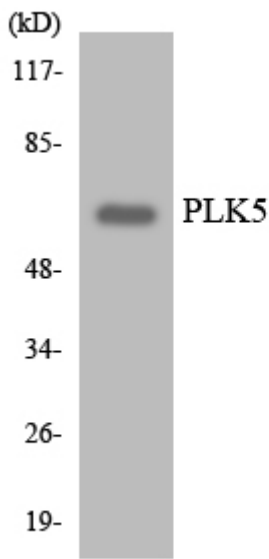
Western Blot analysis of various cells using PLK-5 Polyclonal Antibody



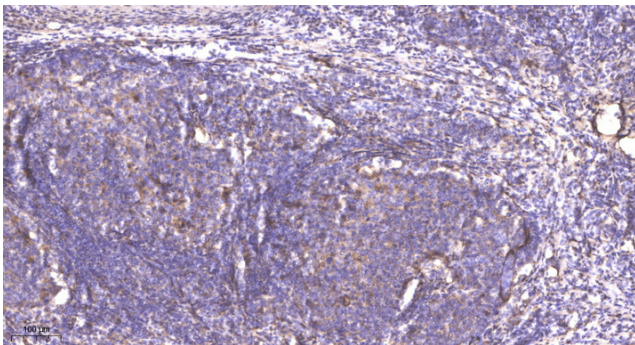
Western Blot analysis of COLO205 cells using PLK-5 Polyclonal Antibody



Western blot analysis of lysates from HeLa cells, using PLK5 Antibody. The lane on the right is blocked with the synthesized peptide.



Western blot analysis of the lysates from HeLa cells using PLK5 antibody.



Immunohistochemical analysis of paraffin-embedded human cervical carcinoma. 1, Antibody was diluted at 1:200(4° overnight). 2, Tris-EDTA, pH9.0 was used for antigen retrieval. 3, Secondary antibody was diluted at 1:200(room temperature, 45min).