



# PIX $\beta$ Polyclonal Antibody

<b>Catalog No</b>	BYab-14922
<b>Isotype</b>	IgG
<b>Reactivity</b>	Human;Mouse;Rat
<b>Applications</b>	WB;IHC;IF;ELISA
<b>Gene Name</b>	ARHGEF7
<b>Protein Name</b>	Rho guanine nucleotide exchange factor 7
<b>Immunogen</b>	The antiserum was produced against synthesized peptide derived from human ARHGEF7. AA range:311-360
<b>Specificity</b>	PIX $\beta$ Polyclonal Antibody detects endogenous levels of PIX $\beta$ protein.
<b>Formulation</b>	Liquid in PBS containing 50% glycerol, 0.5% BSA and 0.02% sodium azide.
<b>Source</b>	Polyclonal, Rabbit,IgG
<b>Purification</b>	The antibody was affinity-purified from rabbit antiserum by affinity-chromatography using epitope-specific immunogen.
<b>Dilution</b>	WB: 1/500 - 1/2000. IHC: 1/100 - 1/300. ELISA: 1/5000.. IF 1:50-200
<b>Concentration</b>	1 mg/ml
<b>Purity</b>	$\geq 90\%$
<b>Storage Stability</b>	-20°C/1 year
<b>Synonyms</b>	ARHGEF7; COOL1; KIAA0142; P85SPR; PAK3BP; PIXB; Nbla10314; Rho guanine nucleotide exchange factor 7; Beta-Pix; COOL-1; PAK-interacting exchange factor beta; p85
<b>Observed Band</b>	80kD
<b>Cell Pathway</b>	Cell junction, focal adhesion . Cell projection, ruffle . Cytoplasm, cell cortex . Cell projection, lamellipodium . Detected at cell adhesions. A small proportion is detected at focal adhesions.
<b>Tissue Specificity</b>	Amygdala,Bone marrow,Brain,Epithelium,Neuroblastoma,Testis,
<b>Function</b>	function:Acts as a RAC1 guanine nucleotide exchange factor (GEF) and can induce membrane ruffling.,similarity:Contains 1 CH (calponin-homology) domain.,similarity:Contains 1 DH (DBL-homology) domain.,similarity:Contains 1 PH domain.,similarity:Contains 1 SH3 domain.,subunit:Interacts with PAK kinases through the SH3 domain. Interacts with GIT1 and TGFB111. Interacts with ITCH (By similarity). Interacts with unphosphorylated PAK1.,

Nanjing BYabscience technology Co.,Ltd



**Background**

This gene encodes a protein that belongs to a family of cytoplasmic proteins that activate the Ras-like family of Rho proteins by exchanging bound GDP for GTP. It forms a complex with the small GTP binding protein Rac1 and recruits Rac1 to membrane ruffles and to focal adhesions. Multiple alternatively spliced transcript variants encoding different isoforms have been observed for this gene. [provided by RefSeq, Mar 2016],

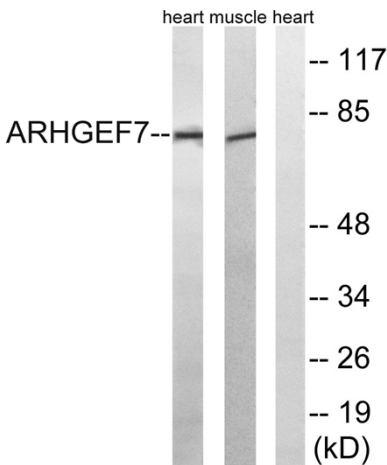
**matters needing attention**

Avoid repeated freezing and thawing!

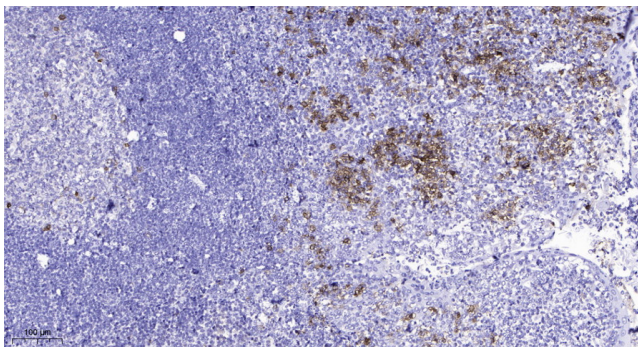
**Usage suggestions**

This product can be used in immunological reaction related experiments. For more information, please consult technical personnel.

**Products Images**



Western blot analysis of lysates from rat muscle and rat heart cells, using ARHGEF7 Antibody. The lane on the right is blocked with the synthesized peptide.



Immunohistochemical analysis of paraffin-embedded human tonsil. 1, Antibody was diluted at 1:200(4° overnight). 2, Tris-EDTA,pH9.0 was used for antigen retrieval. 3,Secondary antibody was diluted at 1:200(room temperature, 45min).