



# PIPK I $\gamma$ Polyclonal Antibody

<b>Catalog No</b>	BYab-14921
<b>Isotype</b>	IgG
<b>Reactivity</b>	Human;Rat;Mouse;
<b>Applications</b>	WB;ELISA
<b>Gene Name</b>	PIP5K1C
<b>Protein Name</b>	Phosphatidylinositol 4-phosphate 5-kinase type-1 gamma
<b>Immunogen</b>	The antiserum was produced against synthesized peptide derived from human PIP5K1C. AA range:305-354
<b>Specificity</b>	PIPK I $\gamma$ Polyclonal Antibody detects endogenous levels of PIPK I $\gamma$ protein.
<b>Formulation</b>	Liquid in PBS containing 50% glycerol, 0.5% BSA and 0.02% sodium azide.
<b>Source</b>	Polyclonal, Rabbit,IgG
<b>Purification</b>	The antibody was affinity-purified from rabbit antiserum by affinity-chromatography using epitope-specific immunogen.
<b>Dilution</b>	Western Blot: 1/500 - 1/2000. ELISA: 1/20000. Not yet tested in other applications.
<b>Concentration</b>	1 mg/ml
<b>Purity</b>	$\geq 90\%$
<b>Storage Stability</b>	-20°C/1 year
<b>Synonyms</b>	PIP5K1C; KIAA0589; Phosphatidylinositol 4-phosphate 5-kinase type-1 gamma; PIP5K1-gamma; PtdIns(4)P-5-kinase 1 gamma; Phosphatidylinositol 4-phosphate 5-kinase type I gamma; PIP5KIgamma
<b>Observed Band</b>	80kD
<b>Cell Pathway</b>	Cell membrane; Peripheral membrane protein; Cytoplasmic side . Endomembrane system . Cytoplasm . Cell junction, focal adhesion . Cell junction, adherens junction . Cell projection, ruffle membrane . Cell projection, phagocytic cup . Cell projection, uropodium . Detected in plasma membrane invaginations. Isoform 3 is detected in intracellular vesicle-like structures.; [Isoform 2]: Cytoplasm. Nucleus.
<b>Tissue Specificity</b>	[Isoform 1]: Isoform 1 is strongly expressed in brain and also detected in heart and lung. ; [Isoform 2]: Isoform 2 is strongly expressed in pancreas and liver and in lesser quantities in brain, heart, lung and kidney. ; [Isoform 3]: Isoform 3 is detected in large amounts in heart and large intestine, is also present in lung, pancreas and thyroid, and to a lesser extent in brain, stomach and kidney.

Nanjing BYabscience technology Co.,Ltd

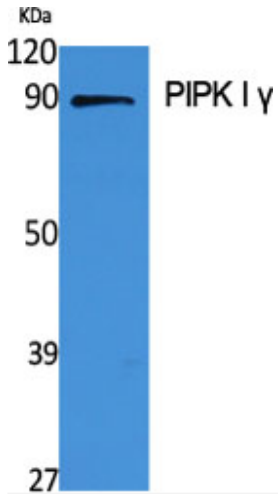


<b>Function</b>	<p>catalytic activity:ATP + 1-phosphatidyl-1D-myo-inositol 4-phosphate = ADP + 1-phosphatidyl-1D-myo-inositol 4,5-bisphosphate.,disease:Defects in PIP5K1C are the cause of lethal congenital contractural syndrome type 3 (LCCS3) [MIM:611369]; also known as multiple contractural syndrome Israeli Bedouin type B. LCCS is an autosomal recessive disorder characterized by early fetal hydrops and akinesia, the Pena-Shokeir phenotype, specific neuropathology with degeneration of anterior horn neurons and extreme skeletal muscle atrophy. LCCS3 patients present at birth with severe multiple joint contractures with severe muscle wasting and atrophy, mainly in the legs. LCCS3 can be distinguished from the original LCCS by the absence of hydrops, fractures, and multiple pterygia.,enzyme regulation:Activated by interaction with TLN2.,function:Plays a role in membrane ruffling and assembly of clathrin-coate</p>
<b>Background</b>	<p>phosphatidylinositol-4-phosphate 5-kinase type 1 gamma(PIP5K1C) Homo sapiens This locus encodes a type I phosphatidylinositol 4-phosphate 5-kinase. The encoded protein catalyzes phosphorylation of phosphatidylinositol 4-phosphate, producing phosphatidylinositol 4,5-bisphosphate. This enzyme is found at synapses and has been found to play roles in endocytosis and cell migration. Mutations at this locus have been associated with lethal congenital contractural syndrome. Alternatively spliced transcript variants encoding different isoforms have been described.[provided by RefSeq, Sep 2010],</p>
<b>matters needing attention</b>	<p>Avoid repeated freezing and thawing!</p>
<b>Usage suggestions</b>	<p>This product can be used in immunological reaction related experiments. For more information, please consult technical personnel.</p>

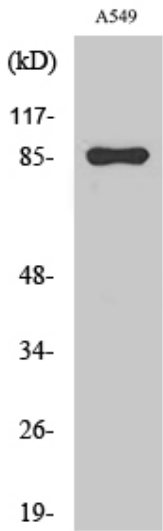
Nanjing BYabscience technology Co.,Ltd



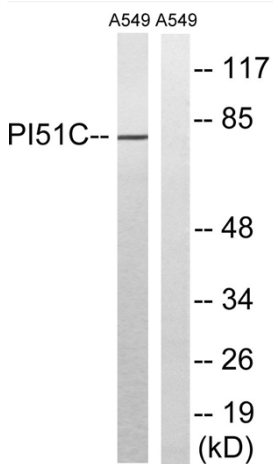
## Products Images



Western Blot analysis of various cells using PIPK I  $\gamma$  Polyclonal Antibody

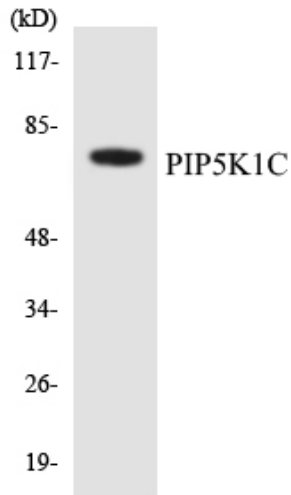


Western Blot analysis of A549 cells using PIPK I  $\gamma$  Polyclonal Antibody



Western blot analysis of lysates from A549 cells, using PIP5K1C Antibody. The lane on the right is blocked with the synthesized peptide.

Nanjing BYabscience technology Co.,Ltd



Western blot analysis of the lysates from HepG2 cells using PIP5K1C antibody.