



PFK-C Polyclonal Antibody

Catalog No	BYab-14907
Isotype	IgG
Reactivity	Human;Mouse;Rat;Monkey
Applications	WB;IHC;IF;ELISA
Gene Name	PFKP
Protein Name	6-phosphofructokinase type C
Immunogen	The antiserum was produced against synthesized peptide derived from human K6PP. AA range:341-390
Specificity	PFK-C Polyclonal Antibody detects endogenous levels of PFK-C protein.
Formulation	Liquid in PBS containing 50% glycerol, 0.5% BSA and 0.02% sodium azide.
Source	Polyclonal, Rabbit,IgG
Purification	The antibody was affinity-purified from rabbit antiserum by affinity-chromatography using epitope-specific immunogen.
Dilution	Western Blot: 1/500 - 1/2000. Immunohistochemistry: 1/100 - 1/300. Immunofluorescence: 1/200 - 1/1000. ELISA: 1/5000. Not yet tested in other applications.
Concentration	1 mg/ml
Purity	≥90%
Storage Stability	-20°C/1 year
Synonyms	PFKP; PFKF; 6-phosphofructokinase type C; 6-phosphofructokinase; platelet type; Phosphofructo-1-kinase isozyme C; PFK-C; Phosphofructokinase 1; Phosphohexokinase
Observed Band	84kD
Cell Pathway	Cytoplasm .
Tissue Specificity	Brain,Epithelium,Kidney,Pancreatic islet,Placenta,Prostate,
Function	catalytic activity:ATP + D-fructose 6-phosphate = ADP + D-fructose 1,6-bisphosphate.,cofactor:Magnesium.,enzyme regulation:Allosteric enzyme activated by ADP, AMP, or fructose bisphosphate and inhibited by ATP or citrate.,miscellaneous:In human PFK exists as a system of 3 types of subunits, PFKM (muscle), PFKL (liver) and PFKP (platelet) isoenzymes.,pathway:Carbohydrate degradation; glycolysis; D-glyceraldehyde 3-phosphate and glycerone phosphate from D-glucose: step 3/4.,similarity:Belongs to the phosphofructokinase family. Two domains

Nanjing BYabscience technology Co.,Ltd



subfamily.,subunit:Tetramer. Muscle is M4, liver is L4, and red cell is M3L, M2L2, or ML3. A subunit composition with a higher proportion of platelet type subunits is found in platelets, brain and fibroblasts.,

Background

This gene encodes a member of the phosphofructokinase A protein family. The encoded enzyme is the platelet-specific isoform of phosphofructokinase and plays a key role in glycolysis regulation. This gene may play a role in metabolic reprogramming in some cancers, including clear cell renal cell carcinomas, and cancer of the bladder, breast, and lung. Alternative splicing results in multiple transcript variants. [provided by RefSeq, Sep 2016],

matters needing attention

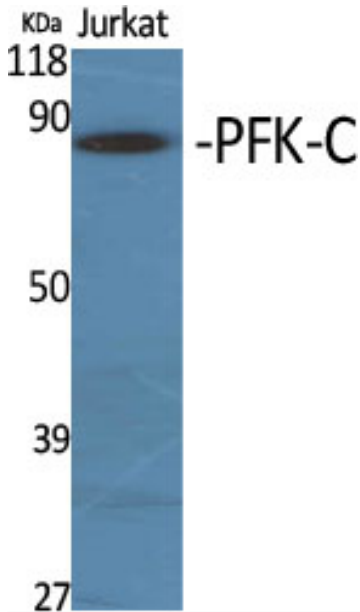
Avoid repeated freezing and thawing!

Usage suggestions

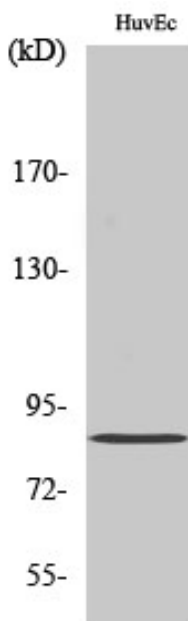
This product can be used in immunological reaction related experiments. For more information, please consult technical personnel.



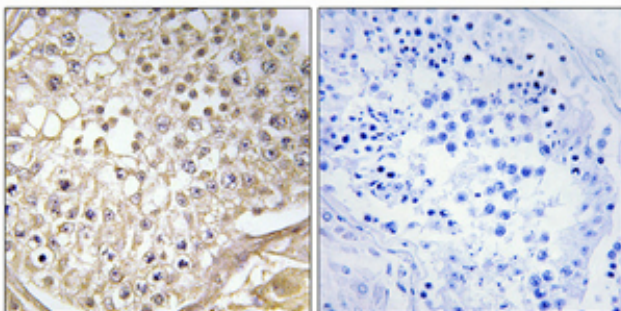
Products Images



Western Blot analysis of various cells using PFK-C Polyclonal Antibody

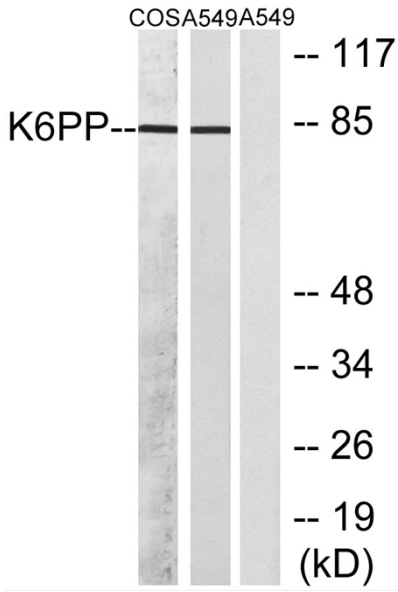


Western Blot analysis of HuvEc cells using PFK-C Polyclonal Antibody



Immunohistochemical analysis of paraffin-embedded Human testis. Antibody was diluted at 1:100(4° overnight). High-pressure and temperature Tris-EDTA,pH8.0 was used for antigen retrieval. Negative contrl (right) obtained from antibody was pre-absorbed by immunogen peptide.

Nanjing BYabscience technology Co.,Ltd



Western blot analysis of lysates from A549 and COS7 cells, using K6PP Antibody. The lane on the right is blocked with the synthesized peptide.